

# International Student Competition

## Neckar Landscape Park

Re-imagining the Productive City Region



**Competition working period: 01.10.2022 – 31.01.2023**

[Register here](#)

### Background

This International Student Competition is part of the 12<sup>th</sup> Landscape Forum of the LE:NOTRE Institute hosted by Nürtingen-Geislingen University in Nürtingen, Stuttgart Region, Germany, from June 26 - July 1, 2023. The 2023 Landscape Forum is supported by Verband Region Stuttgart (Stuttgart Greater Region), the International Building Exhibition IBA'27 Stadtregion Stuttgart, the City of Nürtingen, IFLA-Europe, and other local, regional and international partners.

### About the Landscape Forum

The LE:NOTRE Landscape Forum is a four-day discourse-oriented, interdisciplinary event. It focuses on local landscapes and the sustainability challenges they are facing, with the goal to gather, disseminate, and activate landscape knowledge that can help local constituencies face them. In accordance with the European Landscape Convention, our definition of landscapes includes outstanding as well as everyday or degraded landscapes in urban, peri-urban and rural environments, and calls for communities to have a say in their future

The first Landscape Forum took place in Antalya, Turkey, in 2011. The event continued yearly since then, moving across various European locations. In 2015, we introduced this student competition in order to make the Landscape Forum more inclusive and relevant for the international student community. Since then, the outcomes of the student competition have greatly enhanced the quality and innovation potential of the discourse and visions that have emerged from the event.

## The 12<sup>th</sup> LE:NOTRE Landscape Forum explores Stuttgart Region and IBA'27 in Germany

The Stuttgart Region Landscape Forum supports the discourses initiated by the International Building Exhibition IBA'27 StadtRegion Stuttgart. Within that framework, we will focus our observation on the river Neckar and its tributaries, exemplified by a landscape transect between the medium-sized riverine towns of Nürtingen and Plochingen. Both towns are good examples for the typical spatial features of this polycentric urban agglomeration.

The International Building Exhibition IBA'27 is a 10-years process finishing in the year 2027, the final exhibition year, which coincides with the centenary of the Bauhaus exhibition on the Weissenhof Estate. IBA'27 has set its thematic focus on the concept of the **productive city region**. What makes IBA'27 specific is that it deals with a highly industrialized region. A region that has already reached a high degree of urbanization. The current challenge for economy, policy, planning and design alike is to anticipate the future of production. On that basis, we need to imagine how future forms of production might transform the given urban fabric. The built reality of Stuttgart Region is a polycentric urban landscape. The modernist idea of separating urban functions has been dominant over decades and goes together with an overall priority to car-oriented transport infrastructure.

Industrial production with a strong focus on the automotive sector has been the recipe of Stuttgart's success. About 17% of all regional employees work in this sector. The story started when Karl Benz and Gottlieb Daimler invented the first automobile in 1886. Since then, regional production has been a guarantor for social balance and the democratisation of wealth, at the price of a highly fragmented urban landscape.

Will this 'production & wealth' recipe of the past still work in the future, in light of the grand challenges our world is facing? With this competition, we invite you, the next generation, to re-imagine the Stuttgart Region as a productive landscape in a decarbonized, regenerative and climate responsive world. In that sense, we would like to expand our idea of production from industry to the social, environmental and cultural dimensions, implementing practices that advance landscape democracy, the right-to-landscape, and the well-being and health of the most diverse people and communities. All dimensions come together in a local landscape and need tangible responses on the ground.

### Why Stuttgart Region?

Stuttgart Greater Region today represents one of the most productive landscapes of Europe, not only in economic terms, but also with regard to the social and cultural opportunities it generates. There is growing evidence that the citizens of Stuttgart Region appreciate the quality of their local landscapes, provided in particular by a remarkable regional green network, the so-called Landscape Park Stuttgart Region. This quality has developed into a very relevant location factor, backed up by a restrictive regional plan.

However, pressures on unbuilt land, primarily agricultural land and forests, and on the remaining open spaces scattered across the region's polycentric settlement system are constantly increasing. These sustainability challenges are typical 'wicked problems' evolving in a multipolar system of external driving forces, local interests, values, practices and 'locked-in' situations determined by past decisions, investments and, of course, ownership structures.

## Transdisciplinary landscape transformations for wicked problems

In this context, both the Landscape Forum and this competition aim at introducing 'landscape' as an inter- and transdisciplinary discourse platform. In that sense, we understand 'landscape' as a method for bridging disciplinary and sectoral divides and for advancing knowledge.

We welcome interdisciplinary student teams willing to explore collaborations that go beyond the traditional- and much welcome- collaboration between architects, planners, landscape architects, environment experts and communities to promote sustainable development goals connected to public health, future economies, well-being, local identities and nature.

Addressing the wicked problems of our time requires extensive collaboration across paradigms, epistemologies, and knowledge, and a shared commitment to bridge the gap between academia and civil society to envision democratic landscape transformations across scales and geographies.

### Competition Organising Committee

#### **Concept, Organisation & Coordination:**

**Nürtingen-Geislingen University & LE:NOTRE Institute:** Dr. Ellen Fetzer & Anna Szilágyi-Nagy

#### **Scientific Partners:**

**Verband Region Stuttgart:** Thomas Kiwitt, Dr. Christine Baumgärtner, Silvia Weidenbacher

**IBA'27 StadtRegion Stuttgart:** Elke Gregori, Hannah Pinell, Yuliia Zalomaikina

Adapter Stuttgart & various local and international experts contributing to the context analysis

### Competition Aims

The LE:NOTRE International Student Competition aims to support systemic, integrated and holistic approaches to landscape transformation through multidisciplinary student teams elaborating planning and design proposals.

Our focus will be on the river Neckar in the context of the urban region of Stuttgart between the municipalities of Nürtingen and Altbach. Along this transect, the river transforms from a relatively natural form into a highly industrialized water body. At regional scale, this entire landscape is known as the 'Neckar Valley Landscape Park'.

Broadly speaking, you will develop your proposals around the following aspects. Feel free to interpret these and to set your individual emphasis:

- Planning and designing of multi-systemic relationships for the river landscape of a highly productive urban region.
- Anticipating both the substance and the *Gestalt* of a productive landscape in a decarbonized world.
- Imagining the productive landscape of the future from a social, environmental, economic and cultural dimension
- Deal creatively with the harsh urban form and rugged realities of a modern industrial

landscape with all its discontinuities. Take what is there and imagine what might be possible within the given structures.

- Take the demand for zero land take seriously. Look for any opportunity that regenerates resources that have been consumed earlier by unsustainable development. Imagine creative transition pathways that liberate regenerative power.
- Improve landscape accessibility, including solutions integrating sustainable traffic management, transportation, soft-mobility, and new forms of recreation
- Strengthen landscape ecological functions and ecosystem services to address climate adaptation and resilience;
- Develop new models of sustainable development focused on the reuse of architectural heritage and its integration of green and blue processes;
- Strategically advance equity, diversity, inclusion and social justice through landscape democracy-oriented design and planning actions.

**As a cross-cutting theme, all teams are asked to envision processes of landscape democratic, participatory decision-making, co-creation, and bottom-up, place-keeping management strategies across a short, medium, and long term timeframe.**

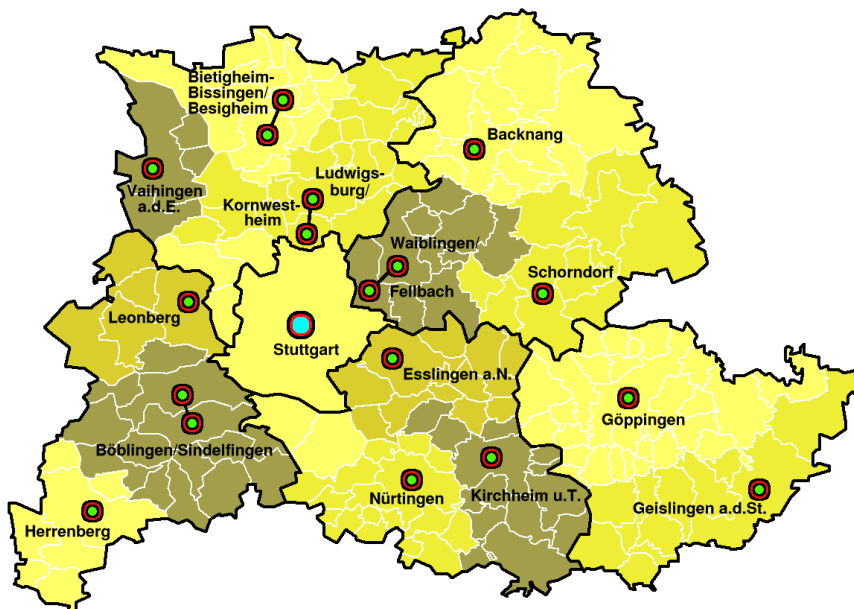


*Commuters' Landscapes on B10 near Plochingen, one of the regions' main arteries*

## Characteristics of Stuttgart Region

Stuttgart Region comprises 179 municipalities in a polycentric structure around the urban centres of Stuttgart, Ludwigsburg, Esslingen and Böblingen. The regional economy is very strong and provides numerous high-skilled jobs, especially in the production of the region's emblematic cars and sophisticated machines. Therefore, people from other areas of Baden-Württemberg, the rest of Germany, Europe and the entire world are attracted by the prospect of finding a well-paid job in the regional economy.

However, the economic success region creates high pressures on scarce land resources. Both the expanding industry and the housing needs of a rising population require space. Available plots for development are rare, since vacant or underused assets like former military sites have already been developed. The region's average density of around 720 inhabitants/km<sup>2</sup> is already high and bound to increase.



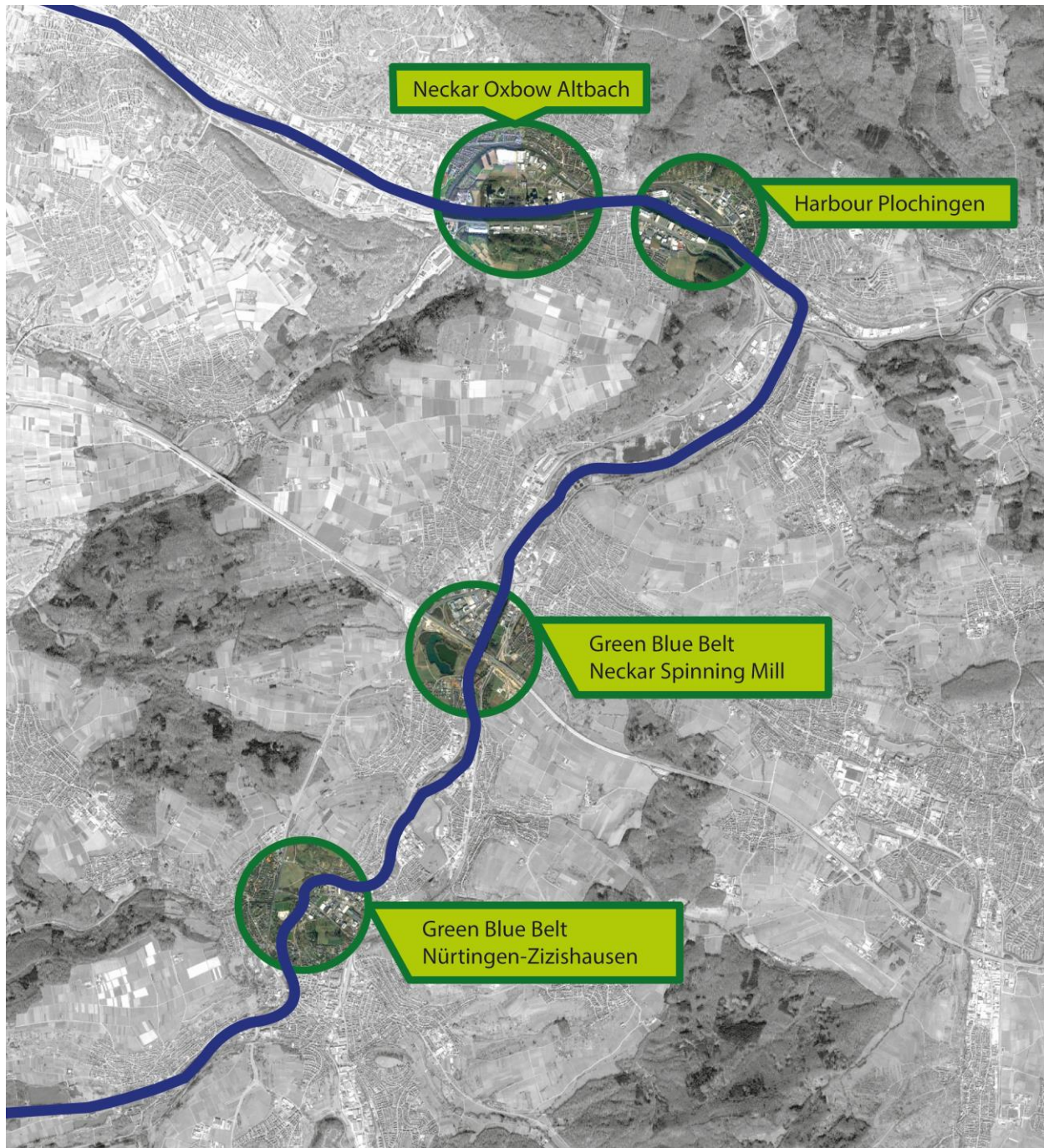
Zones with medium centrality within the wider context of the polycentric agglomeration of Stuttgart Region

Source: Wikimedia, creative commons

While planners have prioritised densification by inner development of the urban centres, we also observe a continuing process of urbanization at the fringes of the municipalities. The spatial and socio-economic system of Stuttgart Region is therefore approaching several limits. The transportation networks are already saturated and commuting is a challenge for many people, especially because high real estate prices drive them out of the urban centres towards peripheral locations. Rent prices in the city of Stuttgart are among the highest in Germany. If appropriate action is not taken, this risks jeopardising the future economic development and the quality of life of the population. There are also important ecological risks since the region is missing space for climate change adaptation.

**Stuttgart Region is therefore a case study characterised by competition for limited territorial resources in a polycentric agglomeration.**

## The competition area: River Neckar between Nürtingen, Plochingen and Altbach



Competition area with four detailing areas to choose from located in the southern part of the Neckar Landscape Park, aerial view source: World Imagery. The submission scale for the overall concepts should be oriented at scale 1:25 000 on A0 portrait format posters.

## Competition Part 1: Analysis and Concept Development

In the first part of this competition you will make a case for your approach/vision and support it with a comprehensive analysis of the landscape dimensions relevant to your vision (poster 1) and an overall landscape development concept (poster 2), illustrating how this vision will be operationalized and unfold, with a clear set of strategies over the short, medium and long term.

The representation scale is **25.000**, to fit presentation boards in A0 portrait format. However, we invite you to add unscaled representations to illustrate synthetic analysis elements as well as conceptual visualisations.

Your territorial scope is the river Neckar landscape between Nürtingen and Altbach. However, please also take the broader context of the metropolitan area into account in you analysis.

### *Some guiding questions supporting analysis and concept development:*

- How has this landscape come into being?
- What forces, armatures, and processes have made it what it is today?
- How would you assess the present state of the landscape system?
- Anticipate: Which driving forces might lead to future landscape change?
- Who and what will be impacted by these changes?
- Which internal strengths and weaknesses, external threats and opportunities must future landscape transformations engage?
- Which values are at risk and why, and how would you ensure that Landscape Democracy principles are embraced in future changes?
- Which alternative future do you envision for this landscape?
- How will these visions be communicated and implemented so that they can be embraced by everyone who shares this landscape?
- What strategic actions are required for the long-term implementation of your vision, success indicators, processes, and steps for gauging such success?



*Everyday landscape near Altbach Power Plant: Landscapes of commerce, housing and production come together in a rather arbitrary pattern*

## Competition Part 2: Detailing areas

Each team is free to choose **one** out of four possible detailing areas. The development ideas for the detailing area need to be consistent with your overall concept presented on the first two posters. The spatial vision for the chosen detailing area is presented at a scale between 1:5000 and 1:2000 on the third A0 poster, portrait or landscape layout. You can show design ideas at any more detailed scale according to your needs on poster number 4.

### Detailing Area 1: Green Blue Belt Nürtingen-Zizishausen

This area along river Neckar is located between the urban core of Nürtingen to the south, the district of Oberensingen to the east, the industrial area of Zizishausen to the west and some residential areas of the same district to the north. The entire area is subject to the planning authority of Nürtingen, which includes Zizishausen and Oberensingen. The primary land use is farming.



*Nürtingen's green belt with commercial zones in the back. Roads and commuters are hidden behind green.*

The regional plan defines the area as part of the intercommunal green belt system with the additional function of separating settlement units (German: Grünzäsur). It includes the entry of the river Aich into the river Neckar as well as important roads leading to the major regional highway A8 with massive daily commuting.

All open areas north of river Aich are landscape protection areas. They belong to a huge 500 hectares landscape protection unit that continues further north. The entire area is potential flood zone according to the one-hundred year flood projections (HQ100).

A key question for this territory is how to translate the idea of the Neckar Landscape Park to the local scale: Which concepts, measures and processes would transform a nameless intercommunal landscape into a contemporary regional park that contributes to local resilience?





*Aerial view of detailing area 1 in between Nürtingen, Oberensingen and Zizishausen*



*Nürtingen's Fairground at the southern edge of the green belt area*

## Detailing Area 2: Green Blue Belt Neckar Cotton Mill



*Wendlingen's old cotton mill as seen from the food and bicycle bridge over the river Neckar*

The second detailing option shows the landscape around the historical Neckarspinnerei /Neckar Cotton Mill, which is a heritage-protected industrial complex. The textile industry has been a major pillar of the local economy until the 1970's. Neckarspinnerei is a typical example of a conversion site of this kind. The municipality currently develops a similar but significantly larger former textile production area only two kilometres downstream, which will further influence the context of this site in the future. Both locations are official projects of IBA'27.

The Otto family of textile producers still owns the property and supports the current experimental exploration of possible use scenarios. The combination of working and living was already taken into account when the buildings were constructed in 1861. The valuable building stock has a high density and at the same time almost village-like structures. This offers diverse possibilities for a new and open mix of uses. The site is to be further densified and upgraded through the expansion of existing buildings as well as through modern conversions.

The aerial view on the following page shows the Neckar Cotton Mill in its landscape context. Like the previous area, it is located right in the regional green belt where also the additional function of separating settlement units is in force (Grünzäsur). Administratively speaking, we find ourselves right at the southeastern edge of the planning authority of the municipality of Wendlingen at the border to Unterensingen and Oberboihingen, each with its own planning authorities. All of this creates a challenging governance context, which should be addressed by the competition teams.



*Aerial view of detailing area 2, in red circle the territory of the old cotton mill*

The historical industrial complex is right at the river Neckar and has a tradition of using waterpower as a local energy source. This landscape is subject to the typical landscape fragmentation pressures caused by traffic infrastructure, with the emblematic A8 highway running right next to it. The construction sites visible on the aerial view belong to the new Stuttgart-Munich high-speed railway that will become operational at the end of this year.

The conversion process of this unique site is currently accompanied by the NGO Adapter Stuttgart e.V. Adapter uses temporary commercial vacancies to test new communal forms of living. Teams choosing this detailing area are invited to imagine a use scenario for the former cotton mill based on a clear vision of what a productive landscape might embrace in the future. In addition, all teams should explore ideas of how to better integrate the cotton mill complex into the wider intercommunal landscape context.



*The manufacturing areas of the cotton mill are under heritage protection*

### Detailing Area 3: Plochingen Harbour Landscape



*Inside Plochingen harbour, view downstream on the harbour facilities*

The third area of choice brings us further downstream right behind the so-called ‘Neckar Knee’ where the river turns sharply to the west. The reason for this turn is the geomorphological unit of the Schurwald Mountains. This unit prevents the river from continuing further on its northeastern direction parallel to the Swabian Alb. The Schurwald also defines the direction of the river Fils coming from the east and entering the river Neckar here. This leads to a bigger abundance of water, which has finally determined the decision to continue the navigability of the river Neckar until Plochingen. Therefore, the whole river from Plochingen onwards consists only of dammed areas.

Plochingen Harbour opened in 1968. The aerial view shows that the territory covered by the harbour, its related industries and the railway infrastructure is larger than the residential and historical zones of Plochingen. The railway areas all belong to Deutsche Bahn (the national railway company of Germany) and are partially used as space-consuming train repair station. In addition, Plochingen is an important railway junction connecting Stuttgart, Tübingen and Munich. The B10, a principal federal road with a heavy load of commuters, runs in parallel to the river. Much of today’s industries on the harbour belong to the recycling sector with very space consuming activities such as steel, aluminium and paper storage.

The aerial view further shows the municipality of Deizisau to the south. Plochingen, Deizisau and Altbach (further west) together form a Local Government Association with shared planning authority. In relation to this detailing area, we ask the competition teams to imagine the role of Plochingen harbour in a future economy and in relation to the landscape context.



*Aerial view of detailing area 3: Plochingen harbour and railway areas in the centre surrounded by the urban patterns of Plochingen to the west and Altbach to the south*



*View from the central bridge on Plochingen's railway landscape*

## Detailing Area 4: Neckar Oxbow Altbach and Power Plant Area



*Evening view on the power plant on river Neckar*

The Altbach/Deizisau power plant is operated by EnBW and considered one of the most modern coal-fired power plants in Germany. It supplies all industries and households in the highly urbanized areas further downstream. Recent plans suggested changing it from coal to gas supply, in order to achieve CO<sub>2</sub> reduction targets and as a pre-step for a future transition to hydrogen energy. Despite the war in Ukraine, these plans are put forward. EnBW's current development target is to complete the transition to hydrogen power by 2035.

At present, coal storage requires a significant amount of space on the site. The power plant is located on an island in the Neckar River formed by a former meander. Half of the power plant is located on the territory of the neighbouring municipality of Deizisau, which is why the full name is Altbach/Deizisau power plant. The two smokestacks are taller than the heights of the Schurwald and the Filder and are therefore a famous regional landmark.

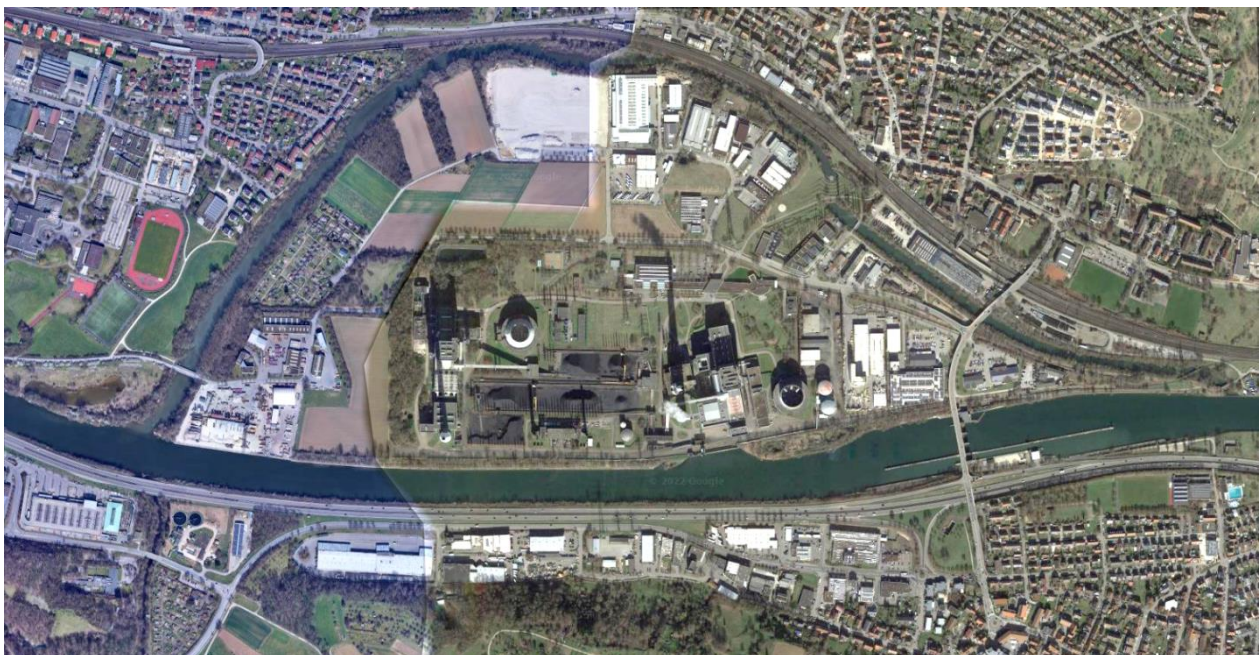


Since 1899, the Neckar has been used for energy generation by one of the largest hydroelectric power plants in Württemberg at the time. These buildings were demolished in 1998 and turned into a park. The Heinrich-Mayer-Park located at the northeastern edge of the island was designed by Luz Landscape Architects from Stuttgart. The park represents an important first step for making the island accessible for local residents. The Altbach stream, which ran south of the railway, was opened up and made into a watercourse. At the same time, the old branch of the Neckar

was extended and renaturalised by almost 200 meters and now functions as a stable buffer area to the adjacent landscape protection area (Luz Landscape Architects).

The western part of the island is again protected as an open space in order to separate settlements (Grünzäsur) and it links to the adjacent green belts, as defined by the regional plan. Like in the previous zone, we see B10, the federal road, determining the southern bank of the river Neckar. Due to the highly artificial modification of the river starting from Plochingen, this area is not a flood risk zone.

We invite the competition teams to imagine this island as a productive landscape in a decarbonized future in which the power plant, and many other elements, will certainly have a new role in this landscape.



*Altbach Power Station as an iconic regional land mark, Image sources:*

[https://upload.wikimedia.org/wikipedia/commons/1/14/Kraftwerk\\_Altbach.JPG](https://upload.wikimedia.org/wikipedia/commons/1/14/Kraftwerk_Altbach.JPG)

<https://upload.wikimedia.org/wikipedia/commons/d/d4/AltbachPowerPlant-pjt2.jpg>

#### Poster 4: How will your new landscapes work?

Landscape system models: on the last poster, you present ideas of how your new landscape is going to work. If this is to become a new landscape of production, which forms of value creation will be driving this transformation? How are people going to cooperate?

Possible formats are: theory of change, business model canvas, power mapping, governance models, cooperation models, co-creation models as well as conceptual, artistic illustrations of your vision for the future productive landscape.

Feel free to add infographics that will communicate the structure and functioning of your landscape transformation, governance, or communication models.

You may also add design details, showing spatial transformations in coherence with your overall concept as well as anything else you think is relevant for understanding your vision.

#### Registration

The full set of background documents, plans and links is accessible after online registration. Registered participants will receive a neutral login ID, which will also be used for submitting the proposals in an anonymous way. You need to add this ID to all submitted posters.

Please register at the following link:

[https://Inicollab.landscape-portal.org/goto.php?target=cat\\_2160&client\\_id=main](https://Inicollab.landscape-portal.org/goto.php?target=cat_2160&client_id=main)

#### Competition Participants

The competition is open to students of all landscape-related disciplines, in particular landscape architecture/planning, the arts, urban/regional planning, , ecology, agro-ecology, real estate as well as related disciplines such as geography, agricultural sciences, dendrology, economics, environmental psychology, forestry, hydrology and water management, IT, archaeology, ecology, social anthropology, sociology or tourism.

Participants should be students at the bachelor, master or PhD levels.

Both individual and group submissions will be accepted. Each student or group is allowed only one entry. The maximum group size is limited to eight contributors. Interdisciplinary submissions are welcome

#### Site visits and accompanying online lectures

We hope you are able to come to the Stuttgart Region during the working period so you can get first hand landscape experiences. In any case, we provide good documentation so that you can develop an advanced knowledge of the area even without travelling.

We offer an accompanied on-site in the period **November 21 – 25, 2022**. A detailed programme will be communicated around Mid-October.



An online lecture series will be offered from Mid-October- December, weekly on Wednesdays at 18 pm CET. The lecture will introduce the urban landscape of Stuttgart Region, its evolution and current challenges, the role of the river and the spatial context of the focus areas. An online feedback colloquium will be held on Wednesday, **December 7, 2022**, at 18 pm CET. Registered participants will receive invitations to all online events and lectures.

### **Preliminary schedule of online lectures, always at 18 pm CET:**

- Tuesday, 18.10.: Introduction to the goals of the competition, the landscape context and its main driving forces (Dr. Ellen Fetzner et al)
- 26.10.: The development of Stuttgart Region and the Landscape Park Stuttgart Region (Dr. Christine Baumgärtner, Silvia Weidenbacher)
- 02.11.: River Neckar as a cultural monument / or: Flood protection/biodiversity (to be announced)
- 09.11.: Focus areas Nürtingen + Neckarspinnerei: Detailed insights + stakeholder dialogue
- 16.11.: Focus areas Plochingen + Altbach: Detailed insights + reflection with Prof. Ute Meyer
- 23.11.: Impulse & Roundtable with IBA'27 StadtRegion Stuttgart
- 30.11.: Regional cooperation in territorial planning, Thomas Kiwitt, Greater Stuttgart Region
- 07.12.: Open Q&A Session

In addition, we invite you to follow the online lectures of the TELOS Landscape Economy seminar group. The seminar will explore the value propositions and economical driving forces of all major land use sectors. The seminar also elaborates on alternative business modelling.

TELOS lectures are held online on Mondays from 16 00 – 19 00 CET, starting October 10.

More information: <https://telos.hfwu.de>

### **Awards**

The LE:NOTRE Institute and its partner organisations will award three prizes and select another three submissions for honorable mention. The award winners will get the opportunity to present their project at the LE:NOTRE Landscape Forum 2023 to a group of international professionals and local stakeholders.

## Submission requirements

### Poster size and format

The submitted project must comprise four (4) A0 posters (84,1mm x 118,9 mm) plus (1) A4 project description. Posters 1 + 2 should be in portrait format. The other posters might be landscape or portrait, depending on the chosen detailing area.

1. **Landscape analysis:** Showing a base map at the scale 1:25 000 with your analysis plus analytical diagrams/sketches (unscaled, according to your own approach), A0 portrait format. Please make sure that you not only analyse the state of play. Try to envision what is going to have an impact on this landscape within 50 years from now. Then derive what needs to be done and make this spatially explicit on the next poster.
2. **Landscape development concept:** General orientation scale is 1:25 000 with additional diagrams, analytical graphics, sketches or cross sections as necessary to illustrate the proposed concept, A0 portrait format. It is possible to present the development concept also by unscaled graphics. We invite you to explore innovative ways of merging physical, systemic and visionary landscape representation. The second panel can already give an indication on your chosen detailing area.
3. **Local landscape development concept for one detailing area:** The base scale can range between 1:5000 and 1:2000, depending on the area chosen. This might also determine if the poster has preferably a landscape or a portrait layout. Local landscape development concept with additional details and visualisations.
4. **The new landscape system model:** On the last poster, you present ideas of how your new landscape is going to work. If this is to become a new landscape of production, which forms of value creation will be driving this transformation? How are people going to cooperate? Possible formats, free of choice, are business model canvas, power mapping, governance models, cooperation models, co-creation models. In addition, you can present here any further spatial detailing using the scale that suits best for illustrating your ideas.

The submission format is PDF. The submission is only online and includes:

- 4 PDF files - 1 for each of the A0 posters
- 1 PDF file with the Project Description (1 A4 text)
- 1 PDF file with the Declaration Form

Individual PDF files should not exceed 60 MB, minimum resolution is 200 DPI.

It is the responsibility of the participants to guarantee that the final images and files are in the size and resolution adequate to their reading. The entrants must ensure that all images, photographs and other material taken from other sources are correctly accredited. All files must be completed in English. Registered participants will receive further information concerning the electronic submission.

## Submission ID

Each participant or participating team will receive a unique and anonymous ID upon registration. This ID needs to be put into the top left corner of each submitted poster (size and format of ID: Arial, font 72). The posters must be numbered to be seen in the right order during the selection.

## Written information

Entrants must also submit a brief description (250 words maximum) in a separate PDF file, identified only by the anonymous ID (DO NOT include the names of the students or the name of the university). This description must be a clear and concise text explaining the key aspects shown in the concept design proposal. The text is to be left aligned (left unjustified) and double spaced, in Arial, font 12.

## Anonymity and Protocol

All plans are supposed to bear the anonymous ID number given to each registered participant in the top left corner (Arial, font 72).

The following naming convention applies to all submitted files: Your ID\_1.pdf, Your ID\_2.pdf etc. An additional PDF file, with the complete declaration form must be included. This must be fully completed. The declaration form will be submitted separately from the project PDF files, and will only be consulted by the jury once the final deliberations are completed.

## Competition rules

### Participation in the competition implies acceptance of the competition rules.

- Proposals received after the deadline of January 31, 2023 will not be admitted.
- Presentations that do not include the author declaration form will not be admitted.
- Submissions shall only be accepted if submitted online in the way described above.
- A selection of the works submitted will be shown in an exhibition during the 12th LE:NOTRE Landscape Forum 2023 in Nürtingen/Stuttgart Region and may be also exhibited elsewhere at the discretion of the Local Organising Committee.
- The Local Organising Committee retains the right of duplication or publication of any or all the material submitted to the competition, and there shall be no obligation whatsoever to the entrants, beyond acknowledging the authorship of the works exhibited or published.
- Submissions that have been published in any way prior to the notification of the jury final decision will not be considered.
- The jury shall preside over the competition and is the sole arbiter at all levels until the final awarding of prizes. All decisions of the jury are final.
- The winners of the prizes and honourable mentions shall be announced by the Chair of the 12<sup>th</sup> LE:NOTRE Landscape Forum Stuttgart Region upon recommendation of the jury.
- All inquiries must be directed to the Competition organising committee. Please read carefully through the brief and instructions, as all required information should be contained there. Jury members are not to be addressed in any way in relation to the competition.
- Participants will need to submit a declaration confirming that competition data and background information will not be used for other purposes.

## Competition language

All submissions must be entirely in English, which is the official language of the LE:NOTRE Landscape Forum. Local names and specific conditions of each country may be included in the local language. This is to ensure that all material can be understood by the jury, who conduct their reviews in English.

## Evaluation Criteria

The jury will evaluate your projects according to the following set of criteria. Please always check your project against these criteria during your work process and in particular before submitting:

Criteria	Details
<b>The degree of connection of the proposed vision to the actual landscape context</b>	The authors show that they have studied and analysed the characteristics of the Neckar landscape from various perspectives. They are aware of the specific spatial, ecological, social, cultural and economic factors. The analysis takes current trends, threats and challenges into account.
<b>Methodological clarity and consistency</b>	The step from analysis to concept development is clearly structured. Challenges, potentials and threats for the river landscape have been derived from the analysis in a logical and coherent way. Planning and design objectives have been defined on this basis and are clearly articulated.
<b>Conceptual expression and clarity</b>	The concept clearly links to the objectives derived from the landscape analysis and evaluation. The concept responds to the local landscape context.
<b>Landscape Ecology</b>	The project builds on a holistic understanding of the landscape's natural foundation and ecological sensitivity. Authors provide innovative biodiversity strategies supported by design.
<b>Landscape Economy</b>	The project includes alternative models of value generation based on an innovative re-invention of the productive landscape. Teams have succeeded in working with representation forms that go beyond classical landscape planning and design such as system models, theories of change and business model canvas.
<b>Landscape Democracy</b>	The team has envisioned processes of landscape democratic, participatory decision-making, co-creation, and bottom-up, place keeping management strategies across a short, medium, and long term timeframe.
<b>Visual communication</b>	The posters are well readable. The authors have managed to illustrate the complexity of the landscape and landscape-related processes in a way that is understandable for other disciplines and stakeholders from different sectors. The authors succeed in integrating process models and holistic visions that build on the specific character of the place.

## Jury members

The competition jury will be composed of local and international experts in the field of landscape architecture, spatial planning, urban design and infrastructure planning and regional development.

## Schedule and Key Dates

- Official start of the working period: October 1, 2022
- Accompanying competition lecture series: October 19 - December 1, weekly on Wednesdays at 18 pm CET
- Registration deadline: January 15, 2023
- Submission deadline: January 31, 2023, at midnight CET
- Jury selection period: February-March 2023
- Award Ceremony Nürtingen, Stuttgart Region, on June 30, 2023

## Contact information

For more information about the 12th LE:NOTRE Landscape Forum Stuttgart Region 2023 and participation at the student competition, please visit the website:

<https://forum.ln-institute.org/international-student-competition-2022-23/>

## Registration link

[https://lnicollab.landscape-portal.org/goto.php?target=cat\\_2160&client\\_id=main](https://lnicollab.landscape-portal.org/goto.php?target=cat_2160&client_id=main)

Basic maps and background materials will be accessible after registration.

Any further project communication will be possible for registered participants via an online forum.

**GOOD LUCK!**