

# AESOP4Food

## *Sustainable Food Planning Seminar*

### *Session 3 / 2025*

*March 20, 2025*



session starts at  
17h00 CET



Roger Raveel, Voor een blauw gelijkende akker en een grijze lucht, 1975

Source image: De Boer & de Olde et al 2020  
Re-rooting the Dutch food system.

# Agenda March 20, 2025

Marian Simón Rojo of Universidad Politecnica de Madrid will give a recap of goals and types of mapping food systems (30 minutes)

Q&A session on introductions and readings, please use the padlet:

<https://padlet.com/geronimo2/questions-for-the-2025-aesop4food-seminar-eeczz0f899y4tud9>

Discussion in smaller groups on the theme of mapping food systems

Outlook on next session March 27

# Phase II. Mapping

## map

verb [T]

UK  /mæp/ US  /mæp/  
-pp-



to represent an area of land in the form of a map:

- *Parts of the mountainous region in the north of the country have still not been mapped.*



to represent how the parts of something are organized or arranged:

- *The first human genome was mapped in 2003.*
- *Check that all network drives are mapped correctly and are not showing up as disconnected.*



to connect a set of values to another similar set, using a particular method or rule:

- *The findings suggest that children learn these words and map them **onto** concepts already present.*





# Mentimeter

<https://www.menti.com/alvfj65zi4yf>

menti.com 2954 3974



# Atlante del cibo

UNO STRUMENTO PER LE  
POLITICHE LOCALI DEL CIBO

---

PIANO STRATEGICO DELLA  
CITTÀ METROPOLITANA DI  
ROMA CAPITALE

[Catalogo cartografico |](#)  
[Geoportale cartografico - Città  
metropolitana di Roma Capitale](#)



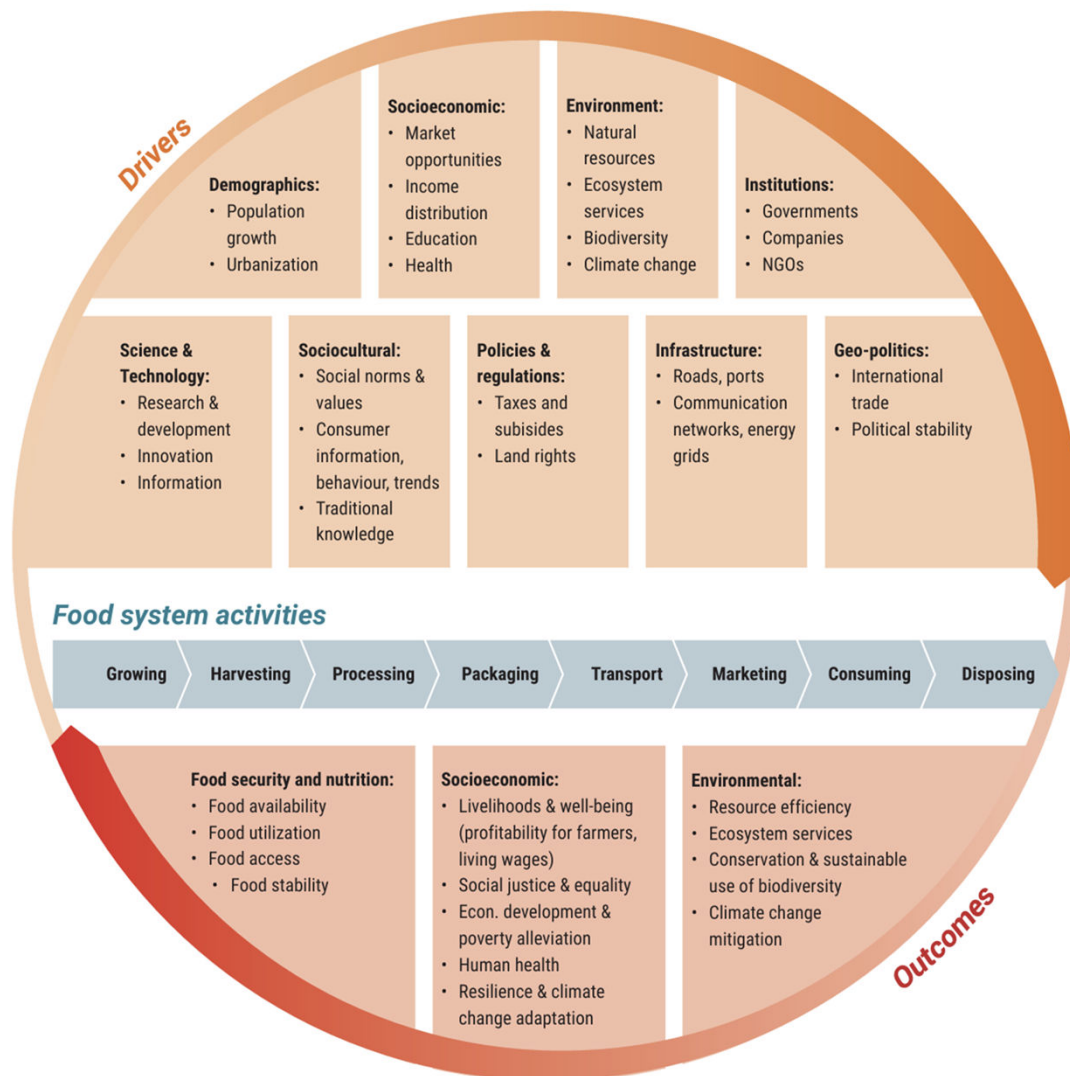
UNIVERSIDAD  
POLITÉCNICA  
DE MADRID



RED DE  
MUNICIPIOS POR  
LA AGROECOLOGÍA



Figure 2: An illustration of food systems elements, drivers, activities and outcomes (adapted from CIAT)



## Collaborative Framework for Food Systems Transformation. UN-environment





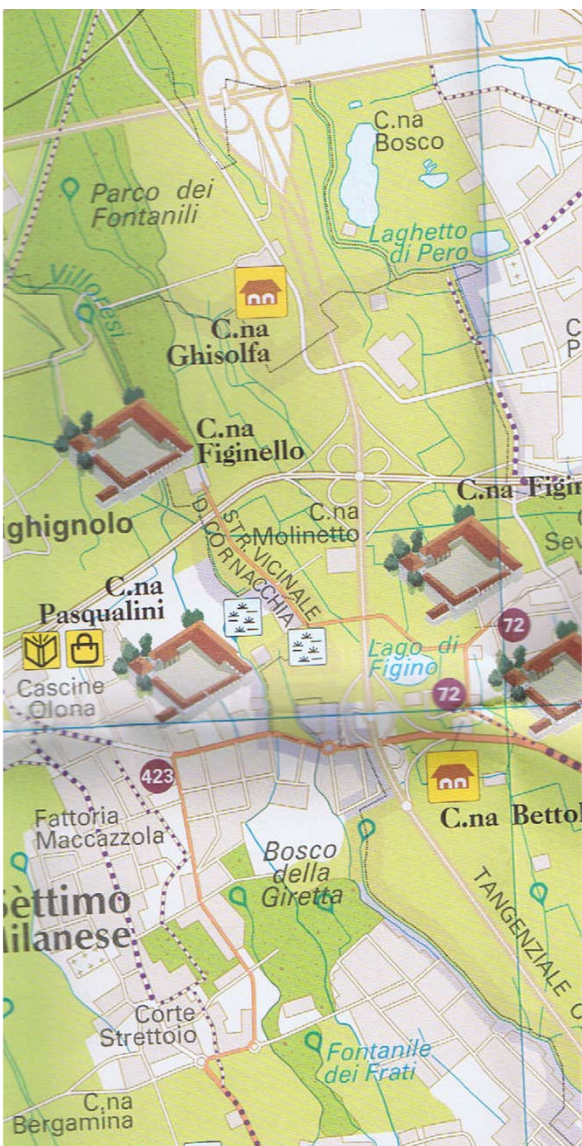
# Food system transformation



**Hybridation between transformative and conventional practices**

**Intensification of ongoing transformative dynamics**

**Visualization of ongoing transformative dynamics**



# Food system transformation



## Hybridation between transformative and conventional practices

Mapping : Recognition of places areas for positive virtuous circles

## Intensification of ongoing transformative dynamics

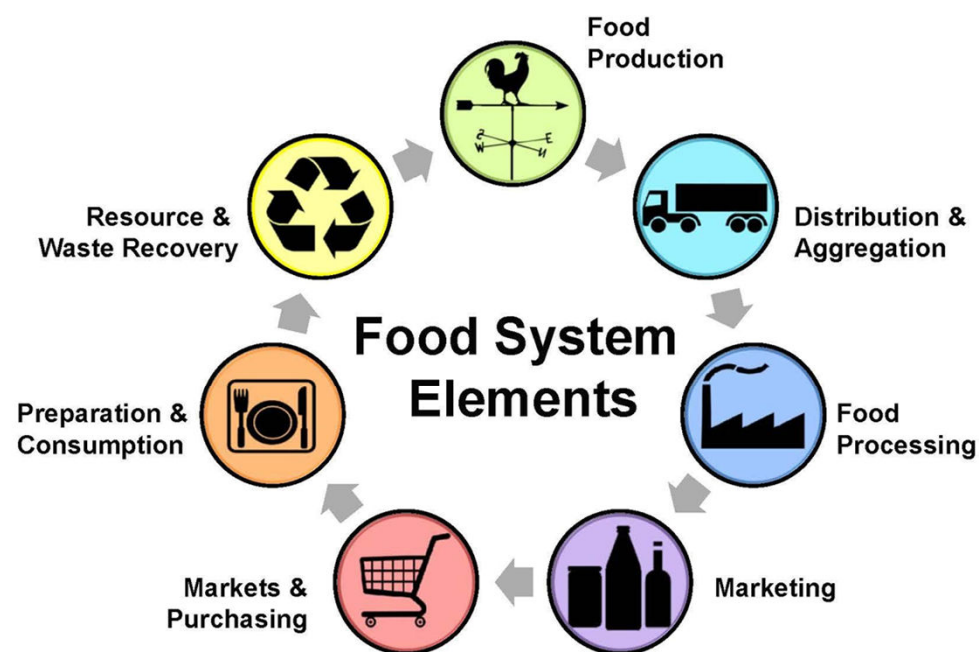
Mapping: Recognition of expansion potential

## Visualization of ongoing transformative dynamics

Mapping: Recognition of ongoing processes and experiences as “lighthouses”



# Mapping ELEMENTS along the food chain



*Adapted by Christy Shi, Center for Environmental Farming Systems.  
From: Wilkins, J. and Eames-Sheavly, M. Discovering the Food System; An experiential learning program for young and inquiring minds.  
Cornell University, Departments of Nutritional Science and Horticulture. <http://www.discoverfoodsvs.cornell.edu/>*

# Mapping ELEMENTS along the food chain

1. Which part(s) of the food chain?

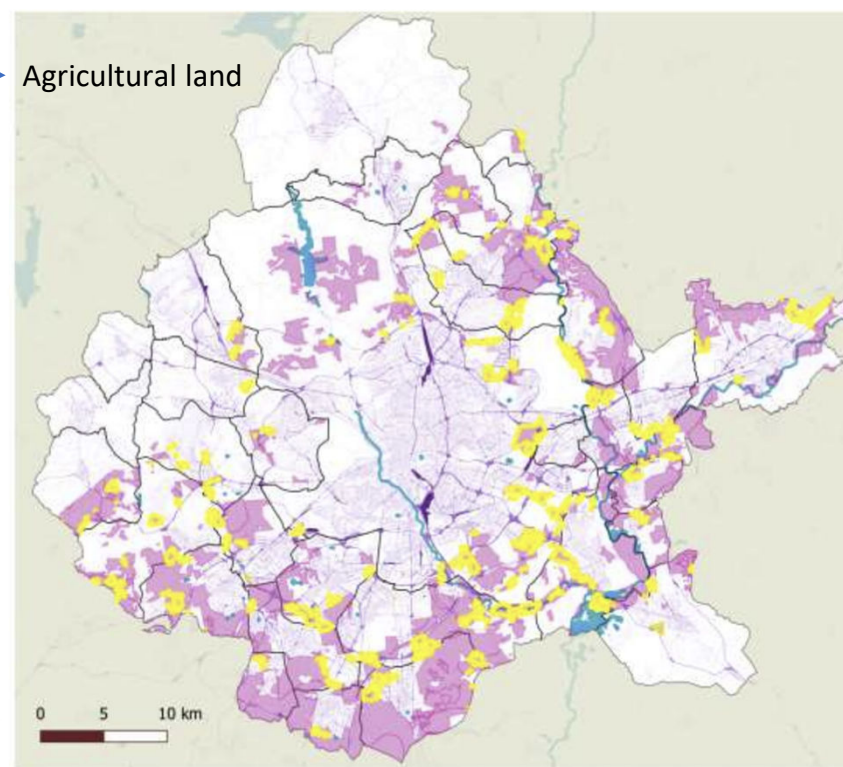
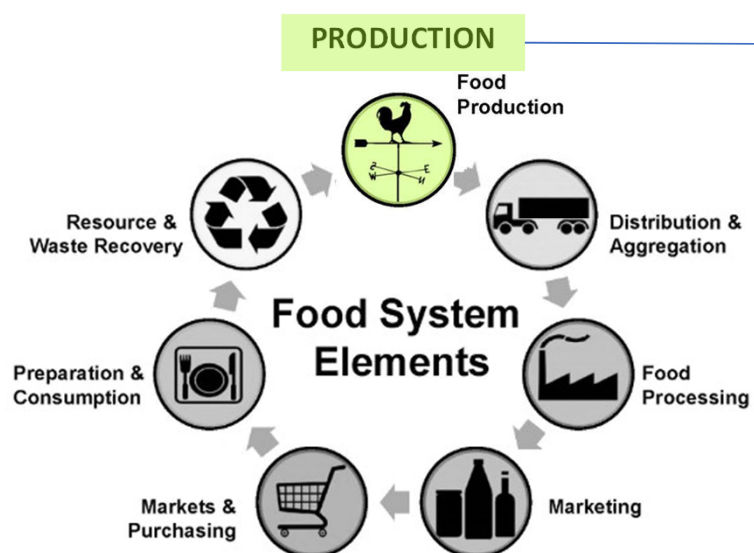


Ilustración 14. , Suelos abandonados en zonas estrategia Food Living Labs

Adapted by Christy Shi, Center for Environmental Farming Systems.  
From: Wilkins, J. and Eames-Sheavly, M. Discovering the Food System; An experiential learning program for young and inquiring minds.  
Cornell University, Departments of Nutritional Science and Horticulture. <http://www.discoverfoodsys.cornell.edu/>

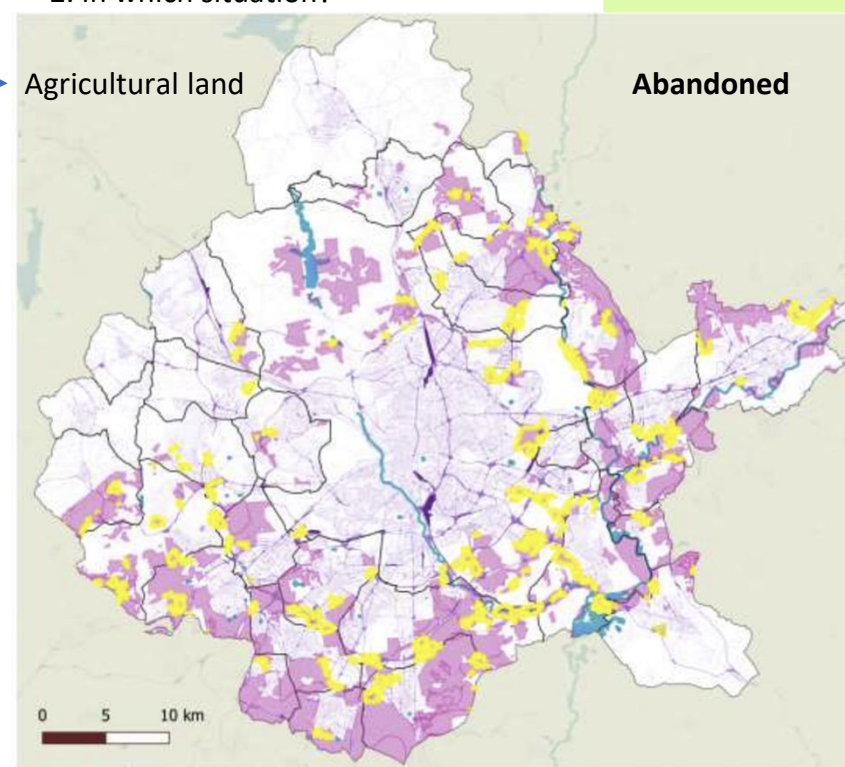
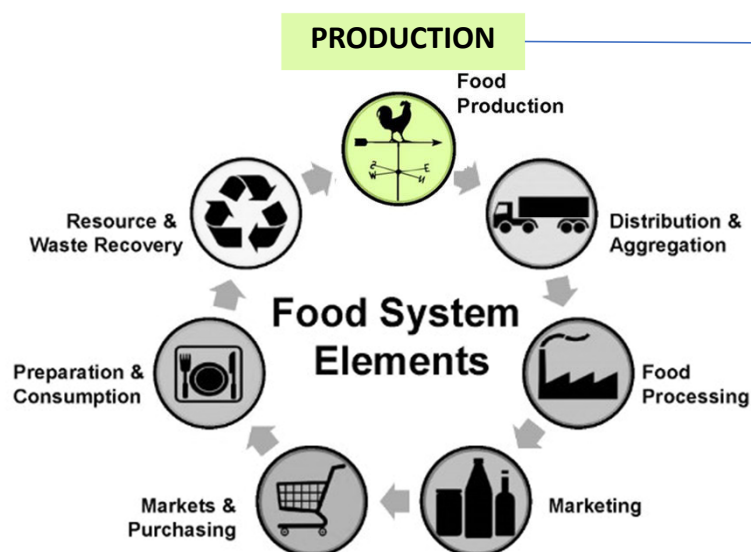


# Mapping ELEMENTS along the food chain

1. Which part(s) of the food chain?

2. In which situation?

POTENTIAL



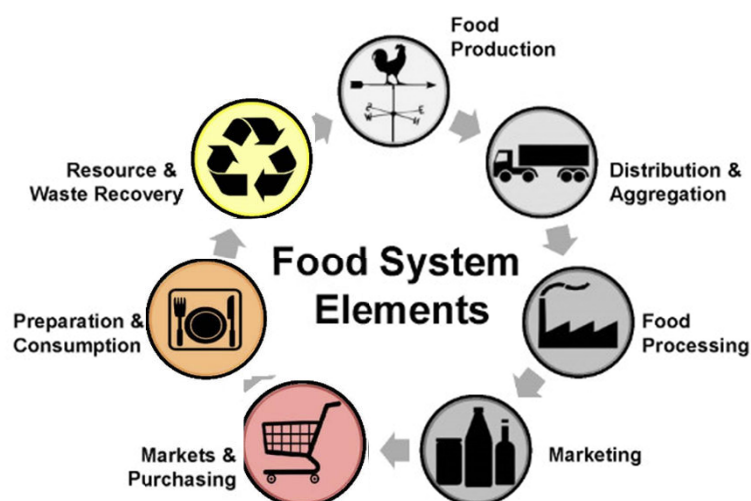
2021SimonRojoetal-SuelosAgrariosAbandonados.pdf (upm.es)

Ilustración 14. , Suelos abandonados en zonas estrategia Food Living Labs

Adapted by Christy Shi, Center for Environmental Farming Systems.  
From: Wilkins, J. and Eames-Sheavly, M. Discovering the Food System: An experiential learning program for young and inquiring minds.  
Cornell University, Departments of Nutritional Science and Horticulture. <http://www.discoverfoodsys.cornell.edu/>

# Mapping ELEMENTS along the food chain

1. Which part(s) of the food chain?



Adapted by Christy Shi, Center for Environmental Farming Systems.  
From: Wilkins, J. and Eames-Sheavly, M. *Discovering the Food System: An experiential learning program for young and inquiring minds.*  
Cornell University, Departments of Nutritional Science and Horticulture. <http://www.discoverfoodsys.com/cell.edu/>

2. Which interactions?

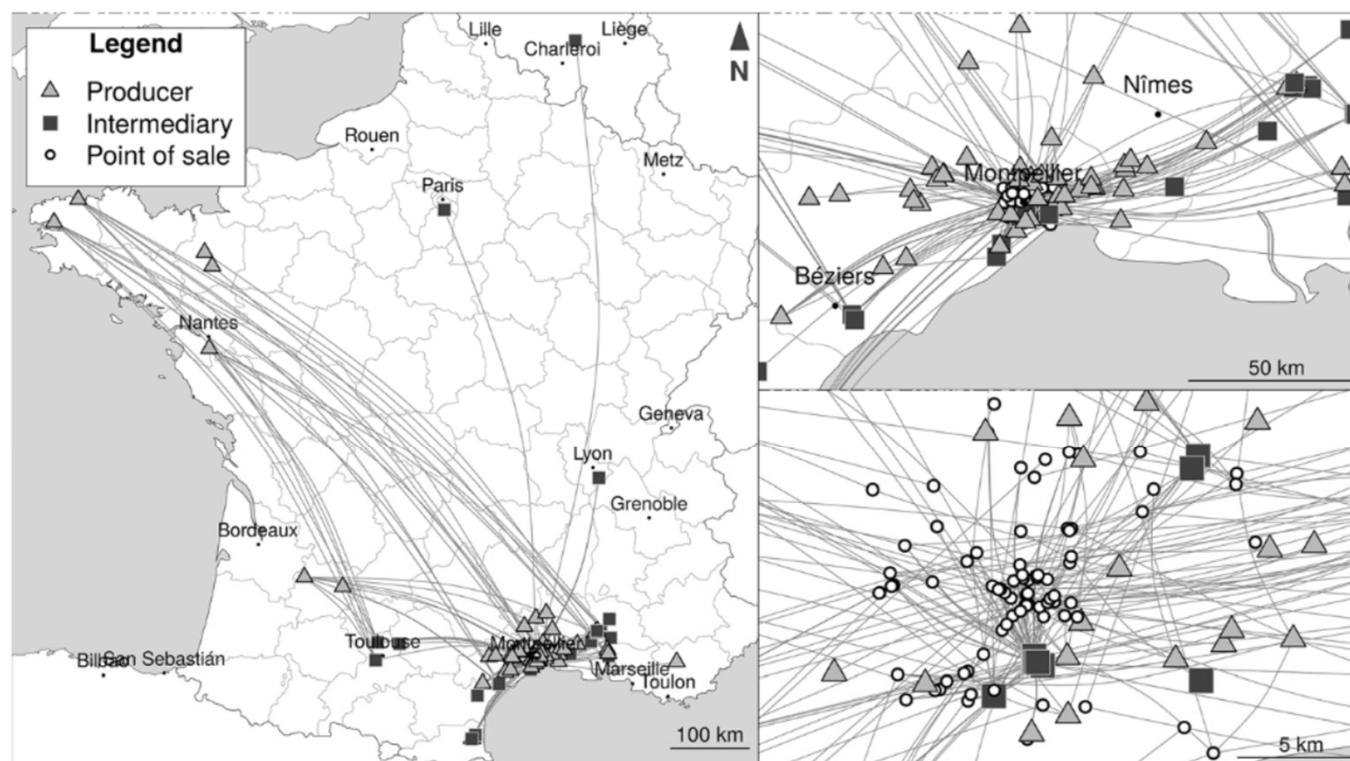
NEIGHBOURHOOD



EASS1820Madrid\_MEMORIA2019.pdf



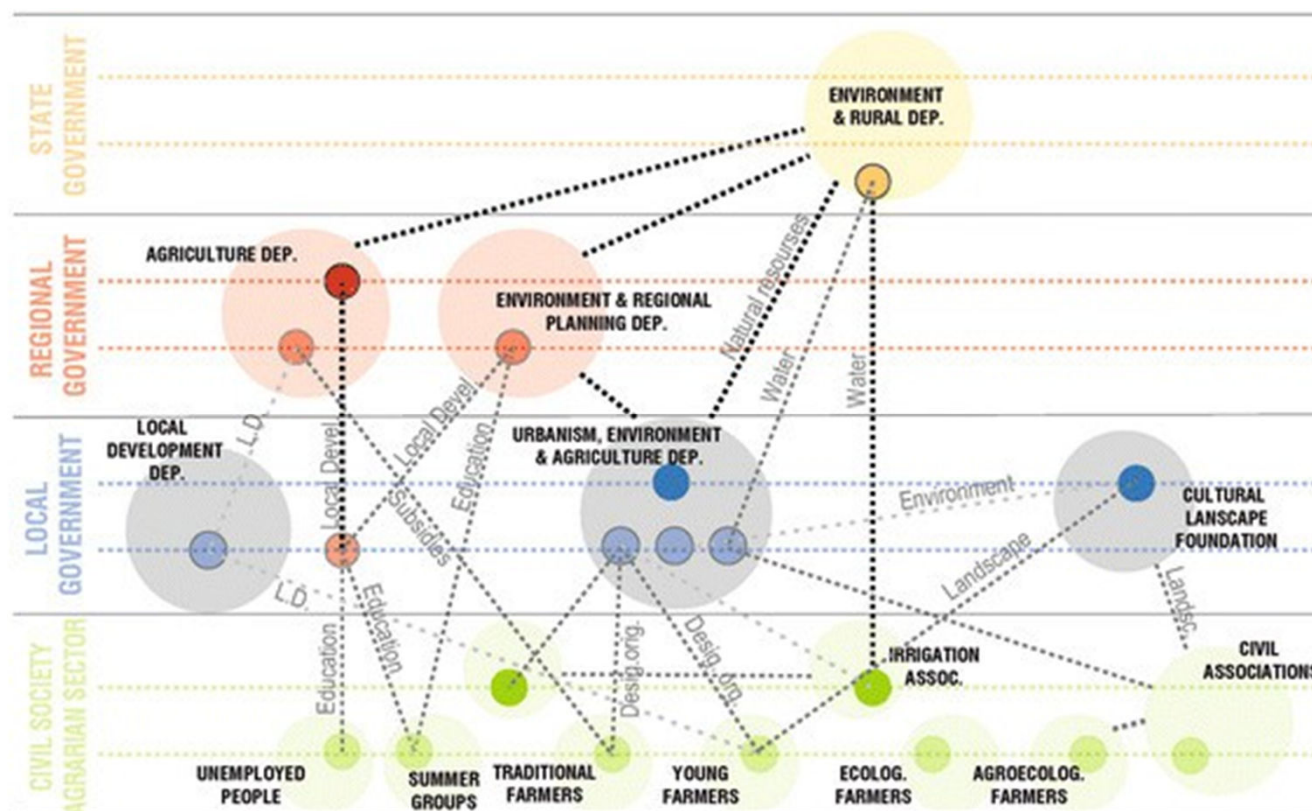
# Mapping FLOWS



**Fig. 4** Flows of in-season tomato supply for Montpellier. Source: IGN (2018) and authors. Realised with igraph 1.2.5, sf 0.9.4 and cartography 2.4.1 R packages

Chiffolleau et al, 2020

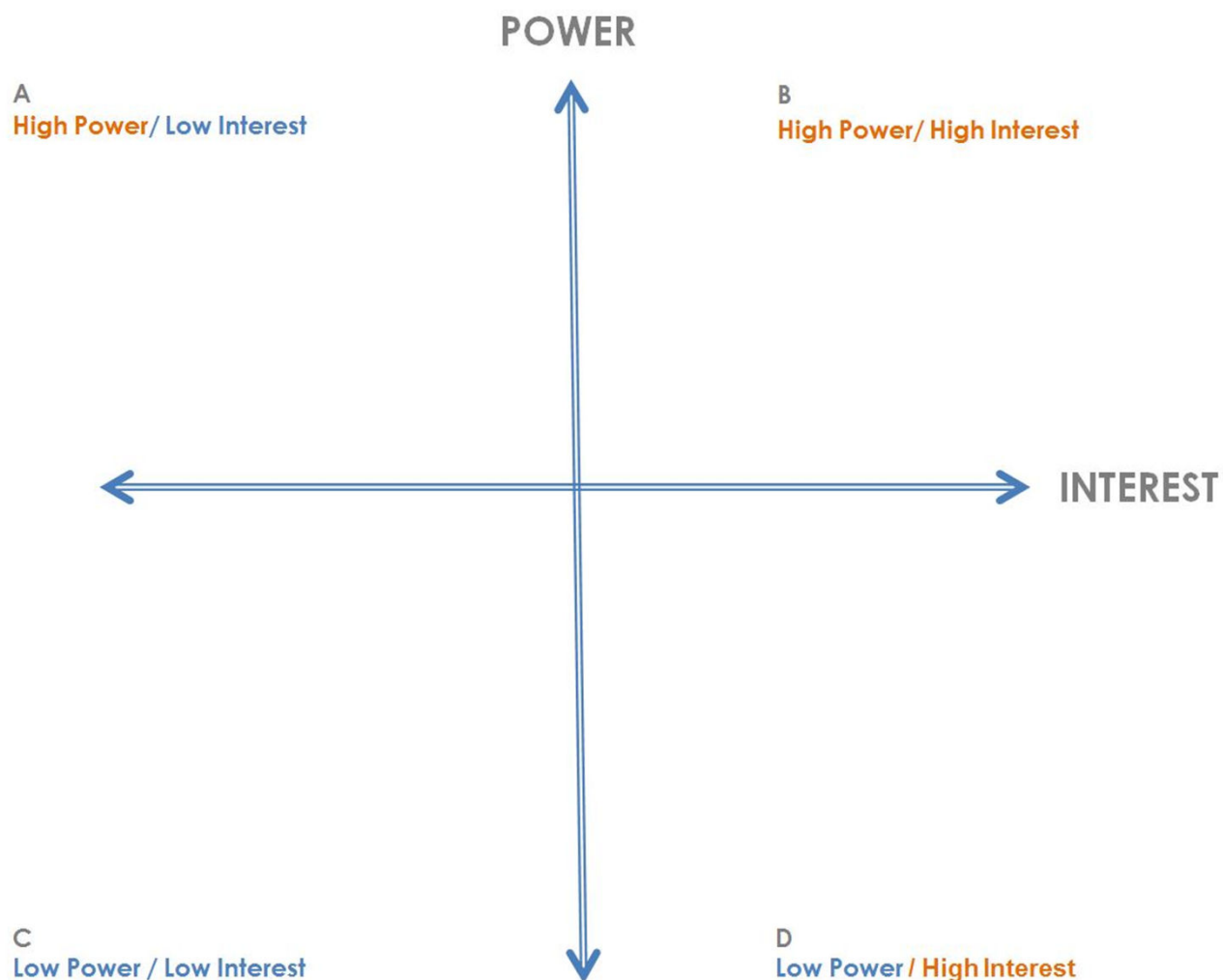
# Mapping ACTORS...and relationships



Pathways towards the integration of periurban agrarian ecosystems into the spatial planning system | Ecological Processes (springer.com)

Territorial stakeholders' perception and management of the territory in Aranjuez; 2013.





## Mapping as a leverage for Food System Change

Mapping Power

Mapping Assets+Resources



# Spatial participatory food (systems) mapping

by **Katrin Bohn**, Bohn&Viljoen Architects, School of  
Architecture & Design, University of Brighton

*Roger Raveel, Voor een blauw gelijnde akker en een grijze lucht , 1975*

# Continuous Productive Urban Landscape [CPUL]

**[C] connects open space :**  
 parcels of inner-urban open land,  
 inner-urban land to a new  
 infrastructure,  
 inner-urban land to the rural land

**[P] uses open space :**  
 through placing Urban Agriculture  
 environmentally,  
 economically and  
 socially productive

**[U] happens 'inside' :**  
 the greenbelt stays green,  
 greenfield sites stay green,  
 brownfield sites become green

**[L] is landscape :**  
 with spatial and visual qualities  
 of the rural and the urban





Action **VIS**  
**Visualising Consequences**

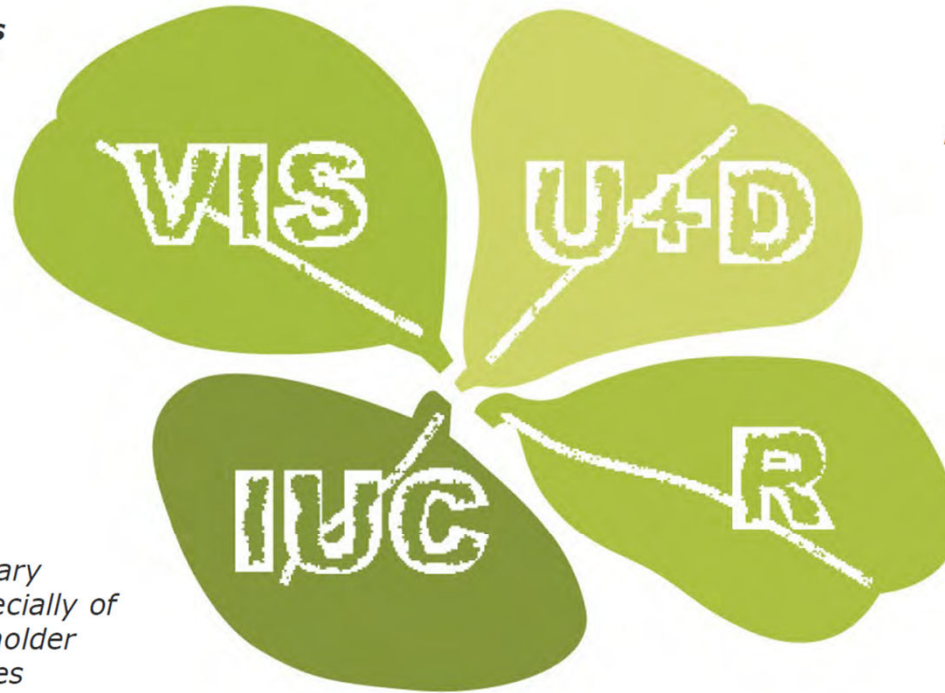
The **qualities and aims** of urban agriculture and productive urban landscapes, such as CPULs, **need visualising** to convince decision makers and raise public awareness.

**An inventory** is necessary **for each location**, especially of spatial, resource, stakeholder and managerial capacities in order to best respond to local opportunities.

Action **U+D**  
**Bottom-Up + Top-Down**

Infrastructural, as well as individual food-productive projects need **parallel top-down and bottom-up** initiatives and integrative design and planning.

**Constant research,** development and consolidation of productive urban landscape projects and concepts is needed **to respond to changing circumstances.**



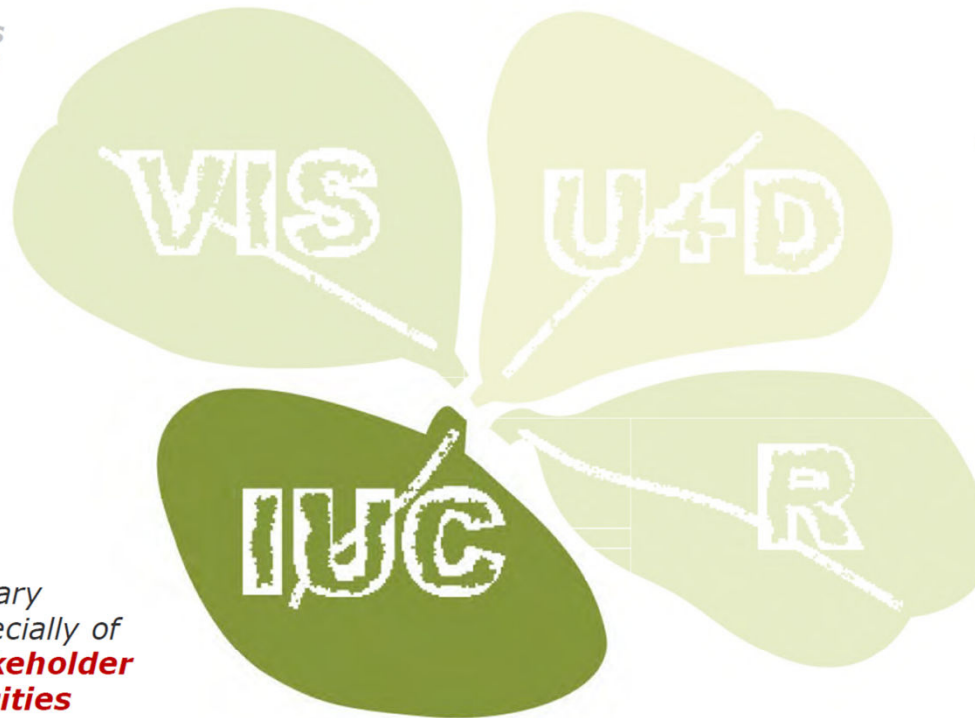
Action **IUC**  
**Inventory of Urban Capacity**

Action **R**  
**Researching for Change**

# MAPPING OPPORTUNITIES AS PART OF THE INVENTORY OF URBAN CAPACITY



The **qualities and aims** of urban agriculture and productive urban landscapes, such as CPULs, **need visualising** to convince decision makers and raise public awareness.



Infrastructural, as well as individual food-productive projects need **parallel top-down and bottom-up** initiatives and integrative design and planning.

**An inventory** is necessary for each location, especially of **spatial, resource, stakeholder and managerial capacities** in order to best respond to local opportunities.

**Constant research,** development and consolidation of productive urban landscape projects and concepts is needed to **respond to changing circumstances.**

Action **IUC**  
**Inventory of Urban Capacity**

Action **R**  
**Researching for Change**



UNIVERSIDAD  
POLITÉCNICA  
DE MADRID



RED DE  
MUNICIPIOS POR  
LA AGROECOLOGÍA





# MAPPING OPPORTUNITIES AS PART OF THE INVENTORY OF URBAN CAPACITY



## Action IUC = Inventory of Urban Capacity

*An inventory is necessary for each location, especially of spatial, resource, stakeholder and managerial capacities in order to best respond to local opportunities.*

At the beginning of the relatively short history of the urban agriculture movement in the Global North, (planning) emphasis was given to identifying (i.e. location, state of use, availability/ownership) and mapping (i.e. area, sun direction, soil quality, pollution, water, exposure to wind, adjacency to markets and compost) open urban space. In recent years, it has become clear that stakeholder and managerial/maintenance capacity around a site and in a food growing project are as important. Moreover, available resources need to be recorded and systematically integrated into the planning and execution of productive urban landscape projects.

Within this action, it is important to address the following strategies, steps or tools necessary for a successful implementation of any urban agriculture project:

## 1. Map **physical sites**

taking into account that suitability for urban agriculture includes issues such as land, orientation (sun), soil, air, boundaries, access, supply (water) and ownership in order to build a catalogue of spatial opportunities.

## 2. Identify potential goals and **stakeholders**

for the project's different development stages from start-up to establishment to longer-term prominence, in order to ascertain and/or grow sufficient local capacity to maintain the project.

## 3. Aim for **no-waste systems** –

grow, eat, compost, grow... – as one aspect of maximising the *Ecological Intensification* on open urban space.

## 4. Identify local **resources** and **managerial capacities**

as a basis for new economic models, environmentally friendly production and fair trade for urban farmers.





# Mapping Assets+Resources

*Roger Raveel, Voor een blauw gelijnde akker en een grijze lucht , 1975*

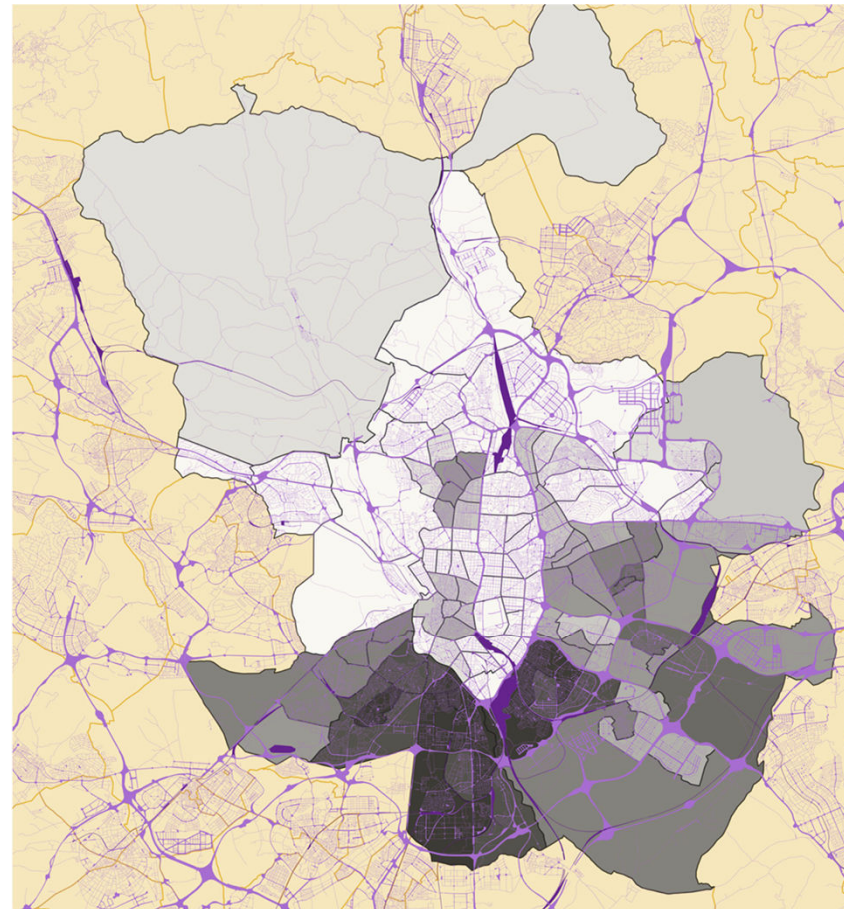
[Powering transformative practices against food poverty with urban planning - Simón-Rojo - 2021 - Urban Agriculture & Regional Food Systems - Wiley Online Library](#)



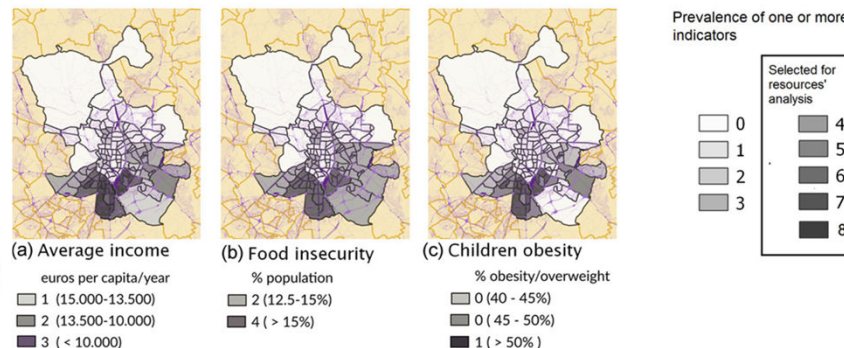
## Mapping as a leverage for Food System Change

Mapping Power

Mapping Assets+Resources



Income, food insecurity, and children's obesity across Madrid's neighborhood



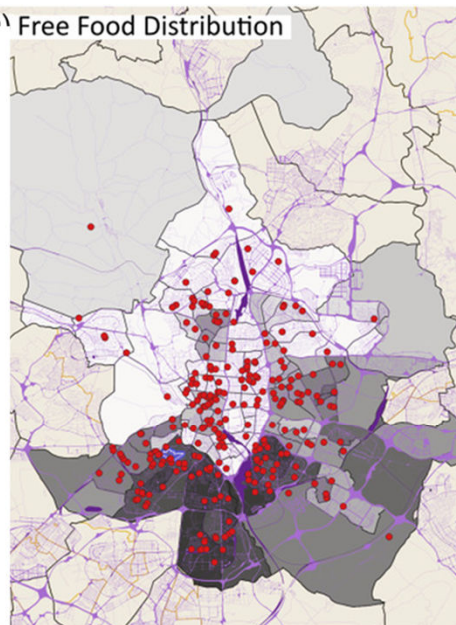


## Public policies

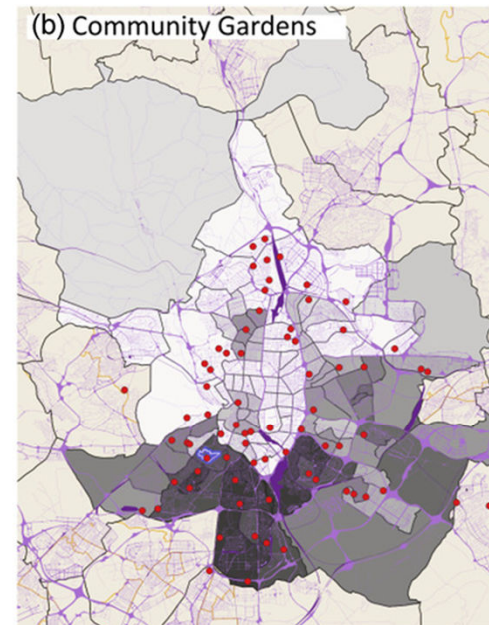
### Resources against food poverty

Food-related social programs	Food (social services), Consolidated	Madrid City Council, annual report of the Food Strategy <sup>a</sup>
Urban strategy: Productive neighborhoods	Productive space, proposal	Madrid City Council, Strategic Planning Unit <sup>b</sup>
Neighborhood regeneration program	Public space, Consolidated	Madrid City Council, Urban Regeneration Strategy <sup>c</sup>
Relational environment		
Food banks	Food, consolidated	FESBAL (bamadrid.org/banco-alimentos)
Solidarity pantries	Food, evolving	Mutual support network <sup>d</sup>
Social tissue	Culture, social action, local character	Madrid Open Data, CSV list of associations
Community gardens	Space, consolidated	Madrid City Council, Community Urban Gardens Program
Community kitchens	Space, potential	Madrid Open Data, CSV cultural and elderly centers, public schools
Municipal markets	Space, potential	Madrid Open Data, CSV on municipal

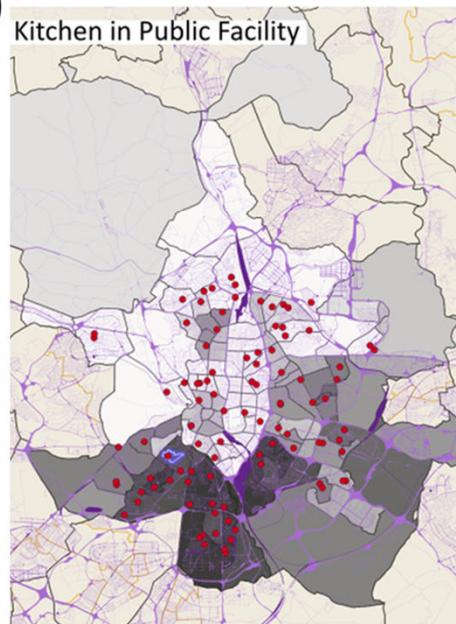
(a) Free Food Distribution



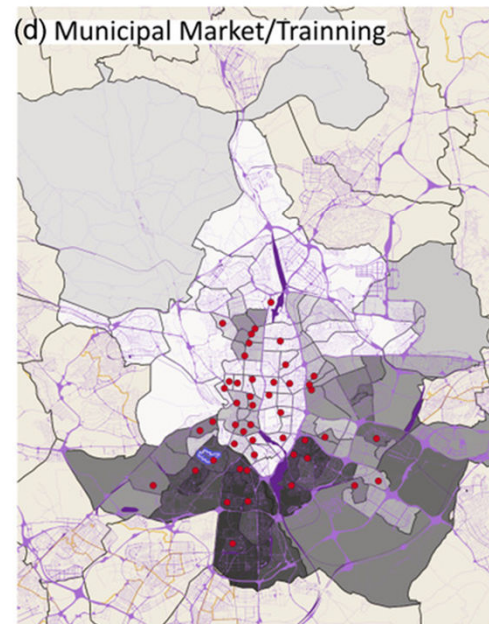
(b) Community Gardens



Kitchen in Public Facility



(d) Municipal Market/Training





# Mapping the Food system?

Food chain  
Food environment  
Food networks

mapping gaps, mapping potentials...

# Q&A session introductions & readings

**Add any questions, comments on this padlet:**

<https://padlet.com/geronimo2/questions-for-the-2025-aesop4food-seminar-eeczz0f899y4tud9>

Simón-Rojo, M. (2021). Powering transformative practices against food poverty with urban planning. *Urban Agriculture & Regional Food Systems*, 6(1), e20021.

Bortoletti, M., and J. Lomax. (2019). Collaborative framework for food systems transformation. A multistakeholder pathway for sustainable food systems. ISBN (2019): 978-92. United Nations Environment Programme, <https://www.oneplanetnetwork.org/knowledge-centre/resources/collaborative-framework-food-systems-transformation-multi-stakeholder>.

Jensen, P. D., & Orfila, C. (2021). Mapping the production-consumption gap of an urban food system: An empirical case study of food security and resilience. *Food Security*, 13, 551- 570.

# Discussion in break out rooms – 20-25 minutes



*Introduce yourself in the group*

*Question 1 At what scale/s should we map for effective food system transformation (from household to the whole planet)?*

*Question 2 For which building blocks collaborative mapping are more suitable?*



# Next session March 27,2025

*Damien Conaré of the UNESCO Chair of World Food Systems at Supagro Montpellier will give a recap of goals setting and visioning (30 minutes)*

*Q&A on the preparatory material and a discussion*

*Discussion in smaller groups on the theme of mapping*

Let us know before March 21 if you want to give a presentation at the end of the seminar in April, you can answer in the padlet.

This is required if you want to receive a certificate.

# Reading material for March 27

**Add any questions, comments on this padlet before the next session:**

<https://padlet.com/geronimo2/questions-for-the-2025-aesop4food-seminar-eeczz0f899y4tud9>

## Preparation viewing

View the recording and the presentation slides of April 4, 2024:

[https://wiki.landscape-portal.org/index.php/AESOP4Food\\_seminar\\_2024#Session\\_April\\_4,\\_2024](https://wiki.landscape-portal.org/index.php/AESOP4Food_seminar_2024#Session_April_4,_2024)

## Preparation reading – 24 pages

UN Habitat, 2012: Visioning as a Participatory Planning Tool – read Chapter 1 and 3. [https://issuu.com/unhabitat/docs/visioning\\_as\\_participatory\\_planning\\_tool](https://issuu.com/unhabitat/docs/visioning_as_participatory_planning_tool)

FAO/RUAF – A Vision for City Region Food Systems – Building Sustainable and Resilient City Regions, **only have a look at page 34-37** so that you are aware of the toolkit.

