

International Student Competition

Northern Budapest and the Danube Bend (Briefing Paper)

From placelessness to a radical HERE

Imagining alternative futures for Budapest's northern periphery

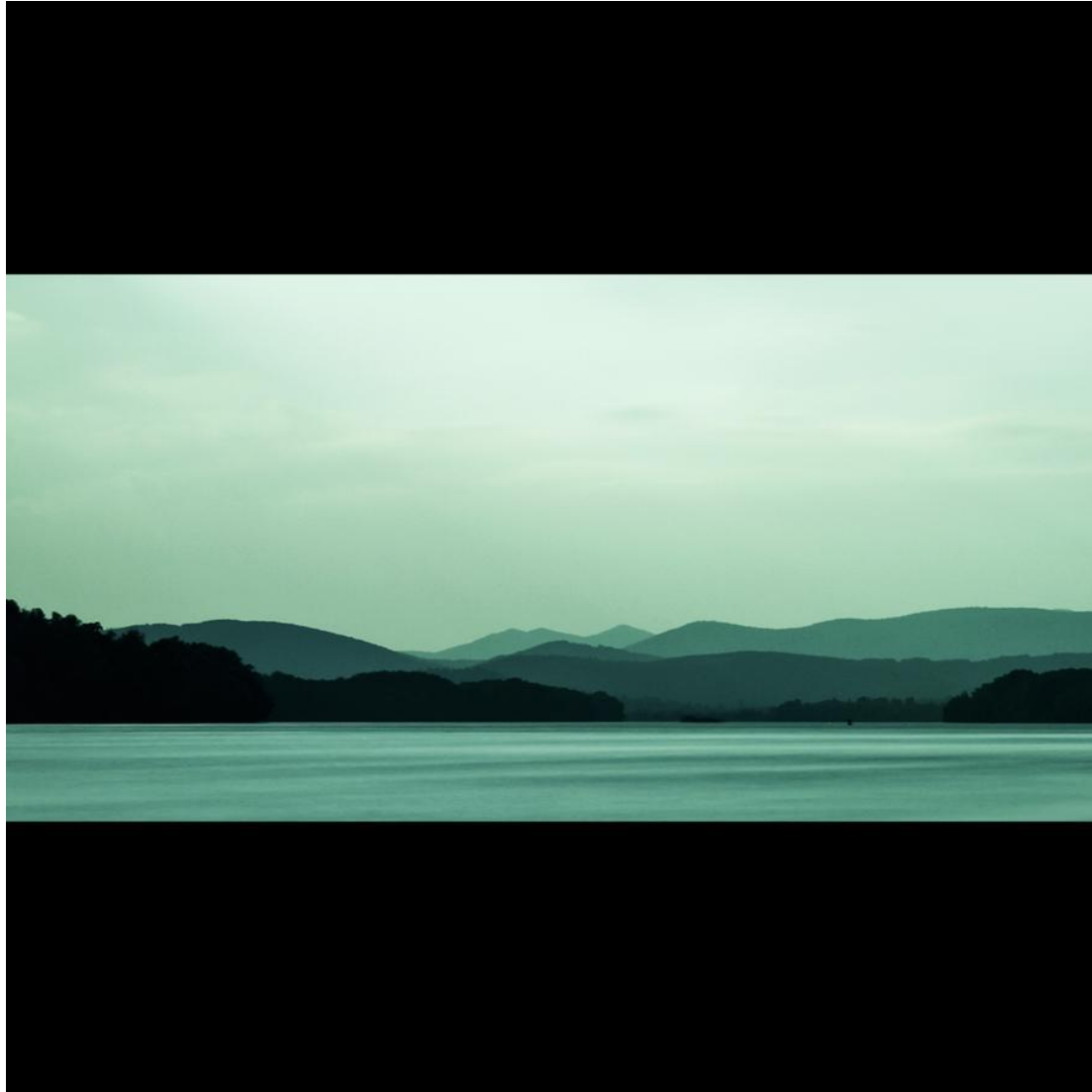


Image: from Kikasz, creative commons

Competition working period: 15.09.2024 – 31.01.2025

Registration link: https://lnicollab.landscape-portal.org/ilias.php?baseClass=ilrepositorygui&ref_id=2612

Contents

Background	3
About the Landscape Forum	3
14 th LE:NOTRE Landscape Forum: Budapest & Danube Bend	3
Local Landscape Challenges	4
Competition Organising Committee	6
The Danube Bend Transect	7
Competition Part 1: Your River Vision (Poster 1)	8
Competition Part 2: Areas for focused planning and design (Poster 2 + 3)	9
Detailing Area 1: The southern settlement edge of Szentendre	10
Detailing Area 2: The inner periphery of Vác	12
Detailing Area 3: Esztergom - A natural and cultural heritage landscape under pressure	15
Part three: How will your new landscapes work? (Poster 4)	18
Competition Registration	18
Competition Participants	18
Site visits and accompanying online lectures	18
Submission requirements	19
Competition language	21
Jury and Awards	21
Evaluation Criteria	22
Schedule and Key Dates	23
Contact information	23
Base maps and competition collaboration platform	23
Accompanying Landscape Economy Seminar	23

Background

This International Student Competition is part of the 14th Landscape Forum of the LE:NOTRE Institute hosted by MATE, the Hungarian University for Agriculture and Life Sciences, in Budapest, Hungary, in cooperation with the local NGO Kultur Aktiv and other partners. The 2025 Landscape Forum will take place from June 18 – 21. The forum further includes the final multiplier event and an international summer school of the EU-funded ERASMUS cooperation project *Democratic Landscape Transformation: Towards an Open Landscape Academy (OLA)* with a focus on the Living Lab activities in Vác.

About the Landscape Forum

The LE:NOTRE Landscape Forum is a four-day, discourse-oriented, interdisciplinary event. It focuses on local landscapes and the sustainability challenges they face, aiming to gather, disseminate, and activate landscape knowledge that can help local communities face them. Following the European Landscape Convention, our definition of landscapes includes outstanding as well as everyday or degraded landscapes in urban, peri-urban, and rural environments and calls for communities to have a say in their future. The LE:NOTRE Institute is a member of the New European Bauhaus and contributes with the annual forum to the knowledge building of the creative industries for a just and sustainable spatial transition in Europe.

The first Landscape Forum took place in Antalya, Turkey, in 2011. The event has continued annually since then, moving across various European locations. In 2015, we introduced this student competition to make the Landscape Forum more inclusive and relevant for the international student community. Since then, the outcomes of the student competition have greatly enhanced the quality and innovation potential of the discourse and visions that have emerged from the event.

14th LE:NOTRE Landscape Forum: Budapest & Danube Bend

This forum will explore the landscape of Hungary's capital city's functional urban area through various thematic lenses. We aim to discuss local sustainability challenges as a basis for collectively ideating possible transition pathways. Within this framework, our competition will focus on the northern periphery of Budapest, following a 60-kilometer transect along the Danube.

The thematic lenses of the landscape forum move each year from one place to another and carry a trans-European learning process across places, identities, and geographies. 2025, in the context of Hungary and Budapest, the forum will discuss in the following working groups:

- Envisioning resilient urban peripheries: A landscape approach
- Foodscapes: Imagining Budapest's zero-km, local food system transition
- Heritage, identities and landscape biographies
- Mobility, landscape perception, and placemaking/place-keeping,
- Cross-cutting theme 1: Landscape Economy
- Cross-cutting theme 2: Landscape Democracy transformations (supported by the OLA ERASMUS project and the Vác Living Lab)

Local Landscape Challenges

Exploring the northern peri-urban landscape of Budapest along the Danube

The international student competition in Budapest this year features a typical peri-urban landscape that is coping, on the one hand, with the impacts of continuous urban sprawl and suburbanization. On the other hand, this landscape is part of the Danube River corridor. The Danube has been a transnational cultural and natural connector for millennia, leaving multiple layers of identity and particular spatial imprints on the landscape.

The overall goal of the landscape forum, and also of this competition, is to generate fresh perspectives and innovative ideas of how we might imagine alternative futures for this periphery by activating and generating its actual landscape capacity.

The transformation of the urban region of Budapest over the past thirty years

Since the fall of the Iron Curtain three decades ago, Budapest's spatial transformations reflect a dynamic interplay of suburbanization, urban renewal, infrastructural advancements, and socio-economic changes. The city has evolved from its post-socialist roots into a vibrant, cosmopolitan metropolis with a complex and multifaceted urban landscape. The ongoing challenges include managing growth sustainably, addressing socio-economic disparities, and ensuring that infrastructure and natural resource management keep pace with development.

While the global image of Budapest is very much associated with its iconic urban waterfront and spectacular hills, the actual daily life in this landscape translates into a complex interdependency of the center with its periphery. In this competition, we want to explore these realities in more depth. In the following, we will introduce the most relevant dimensions of Budapest's spatial transformation. More in-depth knowledge on these topics will be discussed in the online lecture series accompanying this competition:

Expansion of suburbs: Since the early 1990s, there has been significant suburban growth around Budapest. Many residents moved from the city center to suburban areas, seeking better living conditions and larger residential spaces. This movement led to the development of new residential and commercial zones, exemplified here by the cases of **Szentendre, Vác**, and, though to a lesser extent, **Esztergom**. Improved transportation infrastructure, including the expansion of highways and the development of commuter train services, has facilitated the daily commute to and from the suburbs. This has further promoted suburban growth. Most of this has been done at the cost of arable land.

Gentrification and urban renewal: Many inner-city districts, particularly in Pest, have undergone gentrification. Areas such as the Jewish Quarter (District VII) have seen old buildings renovated and repurposed into trendy cafes, boutiques, and residential apartments. This process has attracted a younger, often more affluent population to the city center. The influence of the cultural and creative industries plays an important role in this aspect. This development generated an identity gap between the center and its periphery to some extent.

Mobility and transport infrastructure: Budapest has invested heavily in its public transportation network. The extension of metro lines, the modernisation of tram services, and the introduction of new bus routes have enhanced connectivity within the city. Also, significant road and bridge projects have been undertaken to ease traffic congestion and improve accessibility. The Megyeri Bridge and the planned Galvani Bridge are notable examples that have or will soon alter traffic patterns and stimulate growth in previously underdeveloped areas. However, the current modal split of the functional urban area still shows fossil fuels and car dependency.

Socio-economic changes: The post-socialist transition to a market economy has led to economic restructuring. The emergence of a service-oriented economy has concentrated business activities and corporate offices in central areas, particularly in the Central Business District (CBD) and the Váci út corridor that stretches along the Danube to the north into the competition area. The real estate market has experienced a boom, with rising property prices and increased foreign investment in residential and commercial properties. This has profoundly impacted the city's spatial organization, with luxury developments and modern office complexes altering the urban landscape.

Demographic changes: While the overall population of Budapest has remained relatively stable, there has been a redistribution with more people living in suburban areas. The inner city has seen population fluctuations due to gentrification and changing housing preferences. Redefining and reestablishing community identity in this transformed urban periphery is a very relevant social challenge of today.

Loss of natural resources: Hungary has fully adopted European protection regulations such as the FFH directive. Many of the outstanding and sensitive landscape units along the Danube are well protected, and the river's water quality has improved. However, most of the developments we have previously described are implemented at the cost of valuable farmland. This leads to a significant net loss of soil and soil functions across Budapest's urban region. Even if this process has slowed down somewhat, it is continuously ongoing and unsustainable.

Transdisciplinary landscape transformations for wicked problems

In this context, both the Landscape Forum and this competition aim at introducing 'landscape' as an inter- and transdisciplinary discourse platform. In that sense, we understand 'landscape' as a method for bridging disciplinary and sectoral divides and advancing knowledge.

We welcome interdisciplinary student teams willing to explore collaborations beyond the traditional collaboration between architects, planners, landscape architects, environment experts, and communities to promote sustainable development goals connected to public health, future economies, well-being, local identities, and nature.

Addressing the wicked problems of our time requires extensive collaboration across paradigms, epistemologies, and knowledge and a shared commitment to bridging the gap between academia and civil society to envision democratic landscape transformations across scales and geographies.

Therefore, an essential goal of this competition is to address the root causes of these developments and to ideate alternative futures based on a more sustainable way of living. This comes together with

reconfiguring the spatial capacity as a strategic resource for achieving deep regeneration, climate resilience, identity building, and social integration. At the same time, empathy and sensitivity for the local landscape realities in the periphery are the foundation for achieving this goal.

Competition Organising Committee

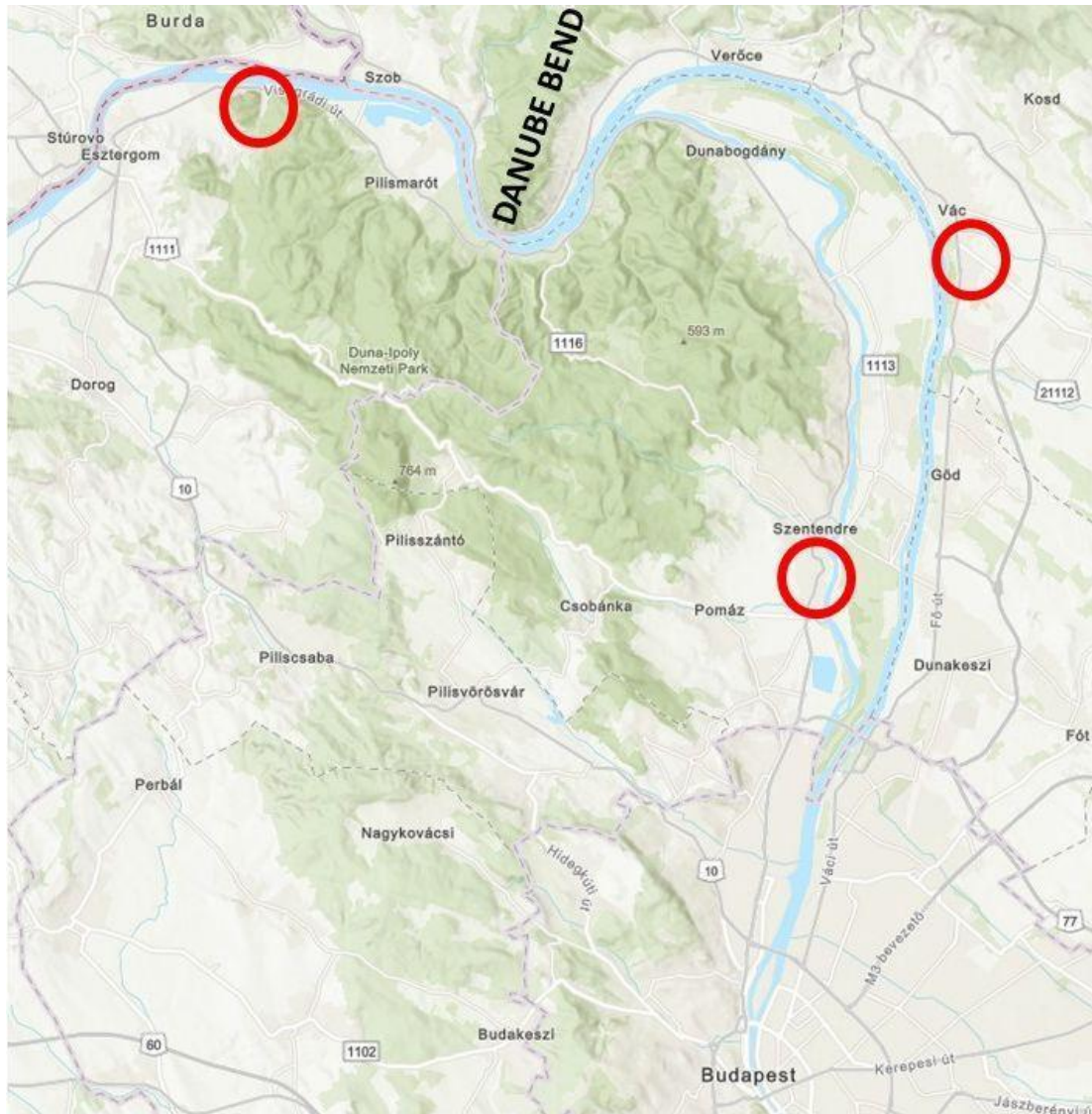
Concept, Organisation & Coordination:

MATE, KultúrAktív & LE:NOTRE Institute:

Ass. Prof. Dr. István Valánszki, Dr. Zsófia Földi, Dr. Vera Iváncsics, Dr. Orsolya Bagdiné Fekete, Dr. Krisztina Filepné Kovács, and Dr. Ellen Fetzner (LE:NOTRE Institute).

Scientific Partners: Dr. Deni Ruggeri, Associate Professor of Landscape Architecture, UMD

The Danube Bend Transect



Competition scope and location of the three detailing areas in the northern functional urban area of Budapest and the Danube Bend, map source: ESRI topographical map retrieved via arcgis.com

We suggest a transect along the Danube starting at the northern edge of Budapest's municipal boundary, crossing various peripheral municipalities, passing the iconic Danube Bend, and finally leading to Esztergom at the Slovakian border.

Within this scope, we suggest three competition focus areas. Each team can select one of them and base their work on that specific landscape context.

Key aspects to consider and guiding questions for getting started

You will develop your proposals around the following aspects. Feel free to interpret these and to set your emphasis:

- Planning and designing of multi-systemic relationships for the river landscape
- Anticipating the substance and the Gestalt of a peri-urban landscape in a decarbonized world.
- Imagining the peripheral landscape of the future from a social, environmental, economic, and cultural dimension
- Deal creatively with the harsh urban form and rugged realities of a modern peripheral landscape with all its discontinuities. Take what is there and imagine what might be possible within the given structures.
- Try to achieve zero land take. Look for any opportunity that regenerates resources consumed earlier by unsustainable development. Imagine creative transition pathways that liberate regenerative power.
- Improve landscape accessibility, including solutions integrating sustainable traffic management, transportation, soft-mobility, and new forms of recreation.
- Strengthen landscape ecological functions and ecosystem services to address climate adaptation, biodiversity, food sovereignty, health and resilience;
- Develop new models of sustainable development focused on the reuse of cultural heritage and its integration into green and blue processes;
- Strategically advance equity, diversity, inclusion, and social justice through landscape democracy-oriented design and planning approaches and actions.

As a cross-cutting theme, all teams are asked to envision processes of landscape democratic, participatory decision-making, co-creation, and bottom-up, place-keeping management strategies across a short-, medium-, and long-term timeframe.

Transect approach and focus areas

While we expect all teams to consider the river corridor's past, present, and future as the overall context of analysis, reflection, and landscape visioning, the core work of the team proposals will be in one of the three focus areas.

Competition teams can choose one of these three areas:

1. The southern settlement edge of **Szentendre**
2. The inner periphery of **Vác**
3. The natural and recreational landscape east of **Esztergom**

Competition Part 1: Your River Vision (Poster 1)

In the first part of this competition, you will develop and represent a landscape development vision. While this requires multiple analytical steps, scenario planning, and goal setting, the competition poster will focus only on your final outcome, which is **your integrated landscape vision**.
Look far into the future.

We do not require a specific representation scale for this, but it is relevant that you develop a vision that reflects the competition's transect between Budapest and Esztergóm (approx. 60 km). This transect defines the territorial scope of your reflection. Please also illustrate how your vision will be operationalized and unfold with clear strategies over the short, medium, and long term.

Visualizing your landscape vision needs to fit a presentation board in A0 portrait format. **We invite you to use creative and artistic approaches of landscape narrative and synthesis.**

Some guiding questions supporting your analysis and concept development:

- How has this landscape come into being? Explore the multiple layers of history along the Danube corridor.
- What forces, armatures, and processes have made it what it is today?
- How would you assess the present state of the landscape system?
- Anticipate: Which driving forces are fuelling landscape change?
- Who and what will be impacted by these changes?
- Which internal strengths and weaknesses, external threats, and opportunities must future landscape transformations engage?
- Which values are at risk and why, and how would you ensure that Landscape Democracy principles are embraced in future changes?
- Which alternative future do you envision for this landscape?
- How will these visions be communicated and implemented so that they can be embraced by everyone who shares this landscape?
- What strategic actions are required for the long-term implementation of your vision, as well as success indicators, processes, and steps for gauging such success?

Competition Part 2: Areas for focused planning and design (Poster 2 + 3)

Each team is free to choose **one** out of three possible focus areas. As presented on the first poster, the development ideas for this area must be consistent with your overall vision.

The **second poster** shows the spatial vision and concept for the chosen focus area at a scale of **1:10.000 - 1:15 000**.

The **third poster** shows a more detailed urban/landscape/open space element at a scale ranging from **1:500 - 1:1500**. You can choose the location of this detailing area while making sure that it is logically derived from your overall vision and spatial concept. The third poster may contain additional detailing at further scales, according to your representation needs.

Detailing Area 1: The southern settlement edge of Szentendre



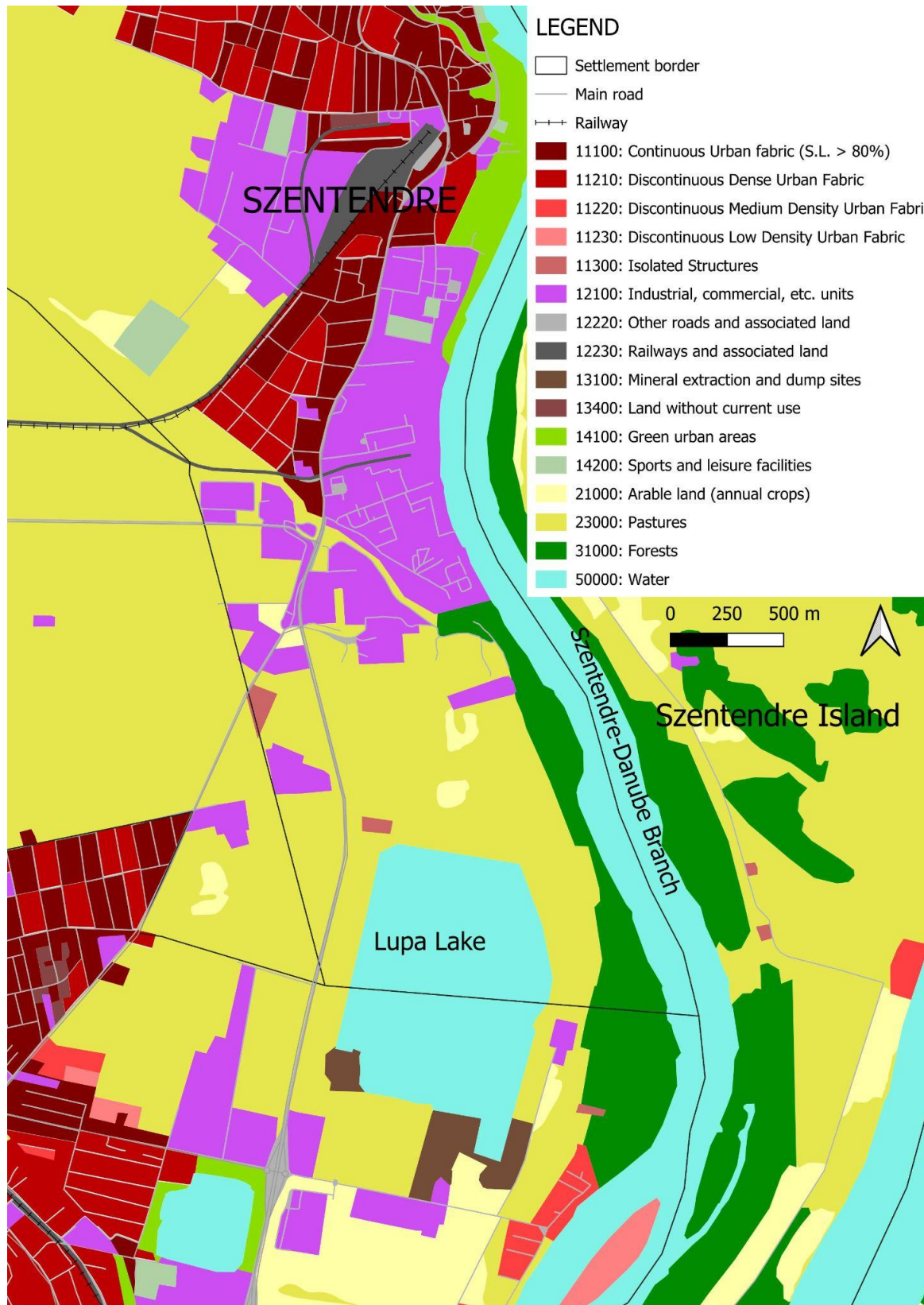
Map sources: Earth imagery via ESRI, arcgis.com



Szentendre, located between the River Danube and the Pilis Mountains, is situated close to the capital city, Budapest. Renowned for its Mediterranean ambiance and Serbian heritage, Szentendre also boasts Baroque architecture, Hungarian folklore shops, and abundant art, culture, and hiking. The chosen area deviates from this typical image, lying on the town's southern edge where industrial sites, urban fabric, and transportation lines intersect. However, the presence of the River Danube contributes to Natura 2000 and water protection areas within the vicinity. Lupa Lake, a popular recreational spot, is also situated here. As a peripheral area, it encompasses diverse functions and seeks its identity between the capital and the renowned tourist and recreational destination of Szentendre along the Danube.



Agricultural landscape of the periurban fringe around Szentendre, Photo taken from google earth



Land use patterns around Szentendre, source: Corine Land Cover data (<https://land.copernicus.eu>)

Detailing Area 2: The inner periphery of Vác



Map source: Earth imagery via ESRI, arcgis.com



River prospect of Vác, photo: Istvan Csuhai, creative commons



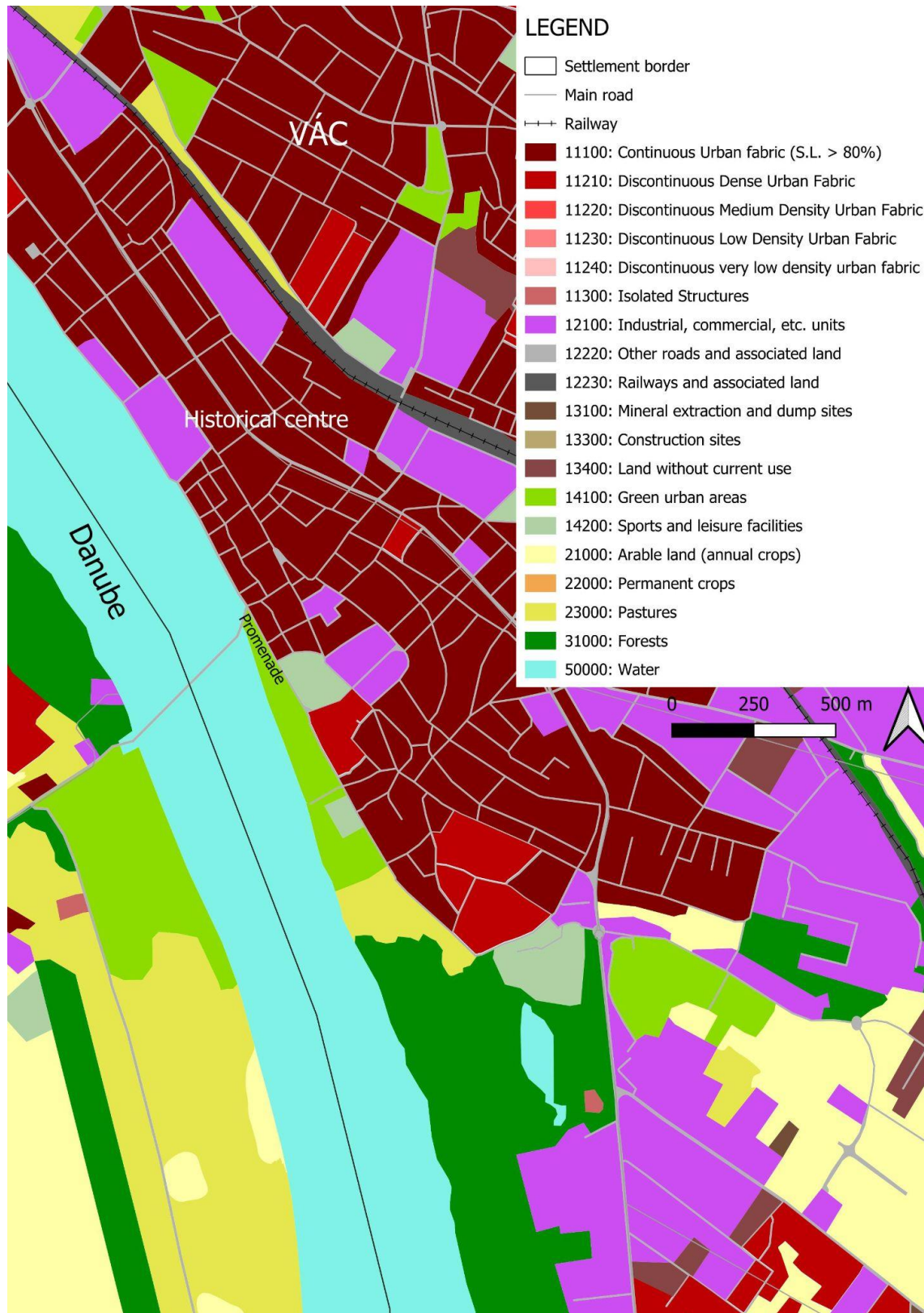
The municipality of Vác is part of the Budapest agglomeration. Located nearly 20 kilometers north of the capital, it serves as a regional center. It experiences a significant population pull effect and faces agglomeration pressure. The city benefits from excellent transport connections to the capital, including roads, highways, railways, buses, a Danube cycle path, and summer excursion boats. A Danube ferry connects Vác to Szentendre Island and the right bank of the Danube. Nevertheless, the focus area is challenging to access from the city center, with limited public transportation options.

The focus area is positioned on the left Danube bank, in the southern neighborhood of the residential areas of Vác (often referred to as the southern gateway to the Danube Bend), at the confluence of the Gombás stream. A substantial portion holds nature conservation status, partly within the Danube-Ipoly National Park, the National Ecological Network's ecological corridor, and the Natura 2000 network. Vác Liget, an urban recreation park and historical monument featuring a spring, is also located within the area. The focus area is actively used for sports, historical events, fishing, dog

walking, and hiking. At the edge of the site is a floodplain forest strip along the Danube which houses a floodplain nature trail established in 1990. Despite several renovations, it is currently in disrepair and closed.



Entering Vác from the south. The area around has many valuable green infrastructure elements, but they are disconnected and their fragmentation continues, source: google street view



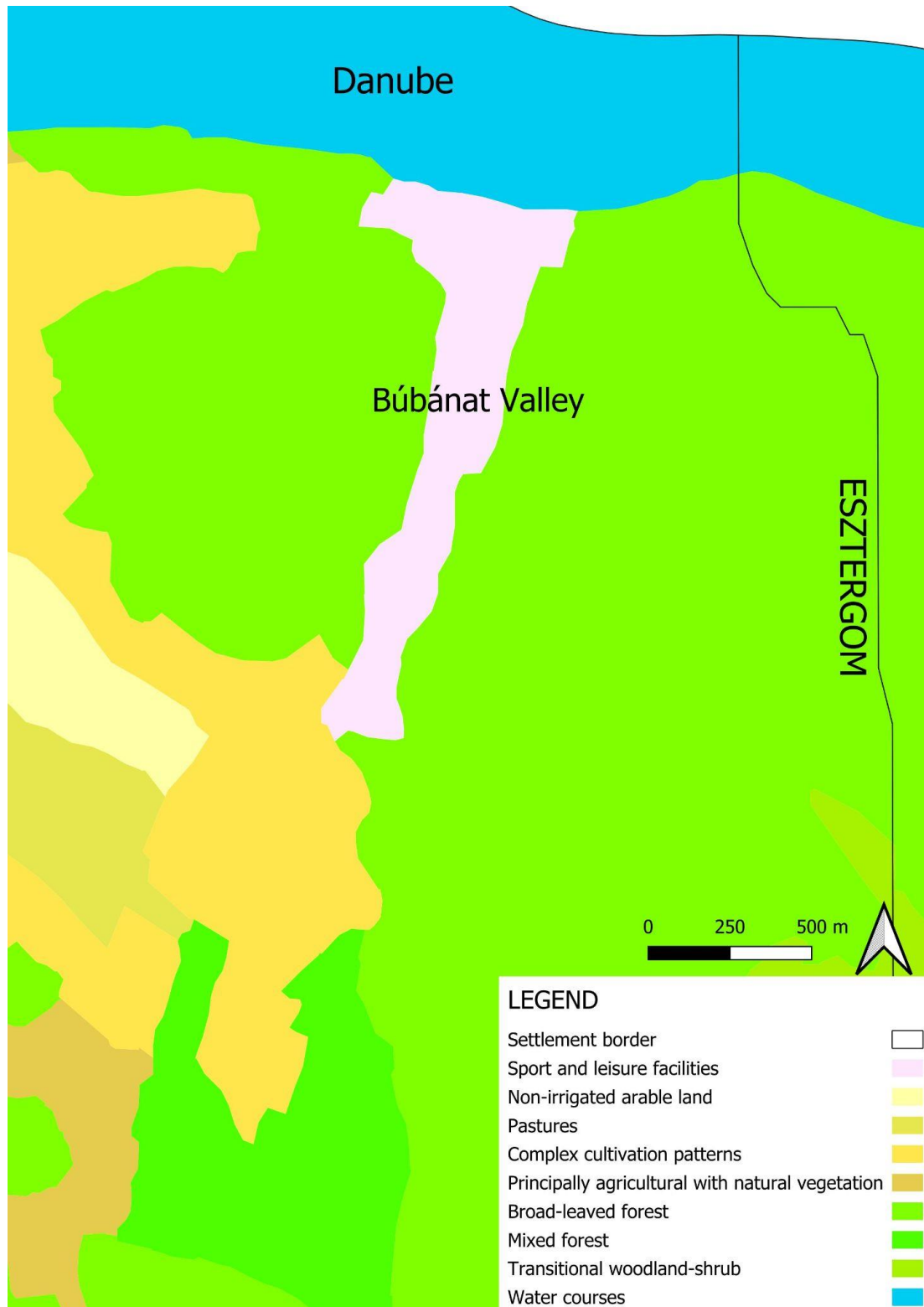
Land use patterns Vác and southern urban fringe, source: Corine Land Cover data (<https://land.copernicus.eu>)

Detailing Area 3: Esztergom - A natural and cultural heritage landscape under pressure



Búbánatvölgy belongs to the administrative area of Esztergom and lies in the valley between Szamár Hill and Hosszú Hill, running north-south on the border of the Duna-Ipoly National Park. It is bordered by the 11th main road and the Danube to the north, about 5 kilometers east of the central urban area. The character of Búbánatvölgy is defined by its location in the valley and wetland, which was used to create the current lake system from the 1960s onwards. Smaller holiday homes were gradually built around the recreational lakes, and since the turn of the millennium, there has been an increasing trend towards residential development. The character of the area is strongly influenced by the surrounding forest areas.

Within the city, a population shift from central to outer areas, primarily Búbánatvölgy, is evident. Unfortunately, this spontaneous urban growth has not been matched by deliberate urban infrastructure development, adversely affecting the town's appearance and environmental preservation. For this focus area, teams should develop proposals that foster sustainable green and blue infrastructure, transportation improvements, and other tourism, recreational, and public space development investments aimed at preserving the area's character and sustainability.



Land use patterns Búbánat Valley, source: Corine Land Cover data (<https://land.copernicus.eu>)



View from the valley to the Danube, source: google street view

Part three: How will your new landscapes work? (Poster 4)

Landscape system models: on the last poster, you should present ideas of how your new landscape will work. How are people and organizations going to cooperate to develop and maintain the areas?

Possible formats are a landscape economy-oriented theory of change, business model canvas, power mapping, governance models, cooperation models, co-creation/co-design models, and further conceptual and artistic illustrations of your local vision for the future peripheral landscape.

Feel free to add infographics that communicate the structure and functioning of your landscape transformation, governance, or communication models. You may also add design details showing spatial transformations in coherence with your overall concept and anything else you think is relevant for understanding your vision.

Competition Registration

The full background documents, plans, and links are accessible after online registration. Registered participants will receive a neutral login ID, which will also be used to submit the proposals anonymously. You need to add this ID to all submitted posters. Please register at the following link:

https://lnicollab.landscape-portal.org/ilias.php?baseClass=ilrepositorygui&ref_id=2612

Competition Participants

The competition is open to students of all landscape-related disciplines, in particular landscape architecture/planning, the arts, urban/regional planning, ecology, agroecology, and real estate, as well as related disciplines such as geography, agricultural sciences, dendrology, economics, environmental psychology, forestry, hydrology and water management, IT, archaeology, social anthropology, sociology or tourism. We do not limit the scope of disciplines with this list.

Participants should be students at bachelor, master, or PhD levels. Both individual and group submissions will be accepted. Each student or group is allowed only one entry. The maximum group size is limited to eight contributors. We encourage interdisciplinary submissions.

Site visits and accompanying online lectures

It is possible to have accompanied tours in the design area between on **Monday, October 21, 2024**.

Please let the organizers know by October 1st at the latest if you want to participate.

There will be a series of online input lectures concerning the competition area. This is the preliminary schedule of the input lectures, which will be recorded and made available to registered entrants.

Schedule of the accompanying lectures (status: 15.09.2024, always check for updates)

NOTE: All times are Central European Time

9.10.2024	18.00	General introduction to the LE:NOTRE competition, its goals and format etc	Budapest 2025 team
16.10.2024	18.00	Introduction to the Budapest Functional Urban Area and the Danube Bend (processes and problems)	Krisztina Filep-Kovács
23.10.2024	18.00	Landscape history and heritage of Danube Bend	Zsuzsanna Illyés, Dalma Varga
30.10.2024	18.00	Information on the three competition focus design areas	Budapest 2025 team
06.11.2024.	18.00	OLA- Open Landscape Democracy - Hungarian Living Lab	Anna Szilágyi-Nagy
13.11.2024	18.00	Nature conservation, flood protection and agriculture	László Nádasy, Tímea Erdei
20.11.2024	18.00	Q and A session	Budapest 2025 team

Submission requirements

Poster size and format: The submitted project must comprise four (4) A0 posters (84,1mm x 118,9 mm) plus one (1) A4 project description. The posters should be in portrait format.

1. **Landscape Vision:** We do not require a specific representation scale for this but it is relevant that you develop a vision that reflects the entire competition transect from Budapest to Esztergom (approx. 60 km). **We invite you to use creative and artistic approaches to landscape narrative and synthesis for this first poster.**
2. **For the chosen focus area:** Shows the spatial vision and concept at a scale of **1:10.000 - 1:15 000**
3. **For the chosen focus area:** An urban/landscape/open space element in more detail at scale **1:500 - 1:1500**. You can select the location of this detailing area on your own while making sure that it is logically derived from your overall vision and spatial concept. The third poster may contain additional detailing at **further scales**, according to your representation needs.
4. **The new landscape system model (overall and/or with focus area):** On the last poster, you should aim to present ideas of how your new landscape will work. How are stakeholders going to cooperate? Possible formats, which you are free to use or not, include bioeconomy, business

model canvas, power mapping, governance models, cooperation models, or co-creation/co-design models. In addition, you can present any further spatial details using the scale best suited for illustrating your ideas.

The submission format is PDF. The submission is only online and includes:

- 4 PDF files - 1 for each of the A0 posters
- 1 PDF file with the Project Description (1 A4 text)
- 1 PDF file with the Declaration Form

Individual PDF files should not exceed 60 MB, minimum resolution is 200 DPI.

The participants' responsibility is to guarantee that the final images and files are in the size and resolution adequate for their reading. Entrants must ensure that all images, photographs, and other material taken from other sources are correctly credited. All files must be completed in English. Registered participants will receive further information concerning the electronic submission.

Submission ID

Upon registration, each participant or participating team will receive a unique and anonymous ID. This ID must be put into the top left corner of each submitted poster (size and format of ID: Arial, font 72). The posters must be numbered to be seen in the right order during the selection. (1-4, left to right)

Written information

Entrants must also submit a brief description (250 words maximum) in a separate PDF file, identified only by the anonymous ID (DO NOT include the students' names or the university's name). This description must comprise clear and concise text explaining the key aspects shown in the concept design proposal. The text is to be left-aligned (right unjustified) and double-spaced, in Arial, font 12.

Anonymity and Protocol

All plans should bear the anonymous ID number given to each registered participant in the top left corner (Arial, font 72).

The naming convention applies to all submitted files: Your ID_1.pdf, Your ID_2.pdf, etc. An additional PDF file with the complete declaration form, must be included. This must be fully completed. The declaration form will be submitted separately from the project PDF files and will only be consulted by the jury once the final deliberations are completed.

Competition rules - participation in the competition implies acceptance of the competition rules.

- Proposals received after the deadline of January 31, 2025, will not be accepted.
- Presentations must include the author declaration form to be accepted.
- Submissions shall only be accepted if submitted online in the way described above.
- A selection of the works submitted will be shown in an exhibition during the 14th LE:NOTRE Landscape Forum 2025 in Budapest and may also be exhibited elsewhere at the discretion of the Local Organising Committee.

- The Local Organising Committee retains the right of duplication or publication of any or all the material submitted to the competition, and there shall be no obligation whatsoever to the entrants beyond acknowledging the authorship of the works exhibited or published.
- Submissions that have been published in any way before the notification of the jury's final decision will not be considered.
- The jury shall preside over the competition and is the sole arbiter at all levels until the final awarding of prizes. All decisions of the jury are final.
- The Chair of the 14th LE:NOTRE Landscape Forum in Budapest will announce the winners of the prizes and honorable mentions upon the jury's recommendation.
- All inquiries must be directed to the Competition organising committee. Please read the brief and instructions carefully, as all required information should be contained there. Jury members are not to be addressed in any way about the competition.
- Entrants must submit a declaration confirming that competition data and background information will not be used for other purposes.
- Entrants must include a declaration either that generative AI tools were not used in the preparation of the entry or explain in detail to what extent they were used (for example, editing text or creating images).

Competition language

All submissions must be entirely in English, the official language of the LE:NOTRE Landscape Forum. Local names and specific conditions of each country may be included in the local language. This is to ensure that the jury, who conduct their reviews in English, can understand all material.

Jury and Awards

Jury members

The competition jury will consist of local and international experts in landscape architecture, spatial planning, urban design and infrastructure planning, and regional development.

Awards

The LE:NOTRE Institute and its partner organisations will award three prizes and select another three submissions for honourable mention. The award winners will be able to present their project at the LE:NOTRE Landscape Forum 2025 to a group of international professionals and local stakeholders.

Evaluation Criteria

The jury will evaluate your projects according to the following set of criteria. Please always check your project against these criteria during your work process and in particular before submission:

Criteria	Details
The degree of connection of the proposed vision to the actual landscape context	The authors show that they have studied and analysed the characteristics of the study area landscape from various perspectives. They know the specific spatial, ecological, social, cultural, and economic factors. The analysis takes current trends, threats, and challenges into account.
Methodological clarity and consistency	The step from analysis to concept development is clearly structured. The analysis logically and coherently derived challenges, potentials, and threats for the periurban river landscape. Planning and design objectives are clearly articulated based on this.
Conceptual expression and clarity	The concept clearly links to the objectives derived from the landscape analysis and evaluation and responds to the local landscape context.
Landscape Ecology	The project builds on a holistic understanding of the landscape's natural foundation and ecological sensitivity. Authors provide innovative biodiversity strategies supported by design.
Landscape Economy	The project includes alternative models of value generation based on an innovative re-invention of the productive periurban landscape. Teams have succeeded in working with representation forms beyond classical landscape planning and design, such as system models, theories of change, and business model canvas.
Landscape Democracy	The team has envisioned processes of landscape democratic, participatory decision-making, co-creation, co-design, and bottom-up place-keeping management strategies across a short-, medium-, and long-term timeframe.
Visual communication	The posters are readable. The authors have illustrated the complexity of the landscape and landscape-related processes by successfully integrating process models and holistic visions that build on the specific character of the place.

Schedule and Key Dates

- Official start of the working period: **September 15, 2024**
- Online lectures: **October – November 2024**
- Submission deadline: **31st January 2025**, at midnight EET
- Jury selection results: by **1st April 2025**
- Awards Ceremony in Budapest: during the **Landscape Forum 18th – 21st of July 2025**

Contact information

For more information about the 14th LE:NOTRE Landscape Forum Budapest and participation at the student competition, please visit the website:

<https://forum.ln-institute.org/student-competition-2024-2025>

Base maps and competition collaboration platform

Registration link

https://lnicollab.landscape-portal.org/ilias.php?baseClass=ilrepositorygui&ref_id=2612

Registered participants will receive access to the internal working area and the forum for upcoming questions to be discussed.

Basic maps and background materials will be accessible after registration.

Explore the Danube Bend landscape with our collaborative Padlet map. Feel free to contribute yourself:

https://padlet.com/ellenfetzter/danube_bend_competition

Accompanying Landscape Economy Seminar

In parallel to the competition, you can follow the Landscape Economy online seminar lectures on Monday afternoons. More information:

https://telos.hfwu.de/index.php?title=TELOS_Online_Seminar_2024-2025

GOOD LUCK!