

A New Look at Brazilian Landscapes

1. Travel through Brazil - 1817/1820 - Spix and Martius
2. Roberto Burle Marx - Sitio Burle Marx
3. Expeditions through Brazilian Landscapes



Dr. Carl Friedrich Philipp von Martius, 1821.

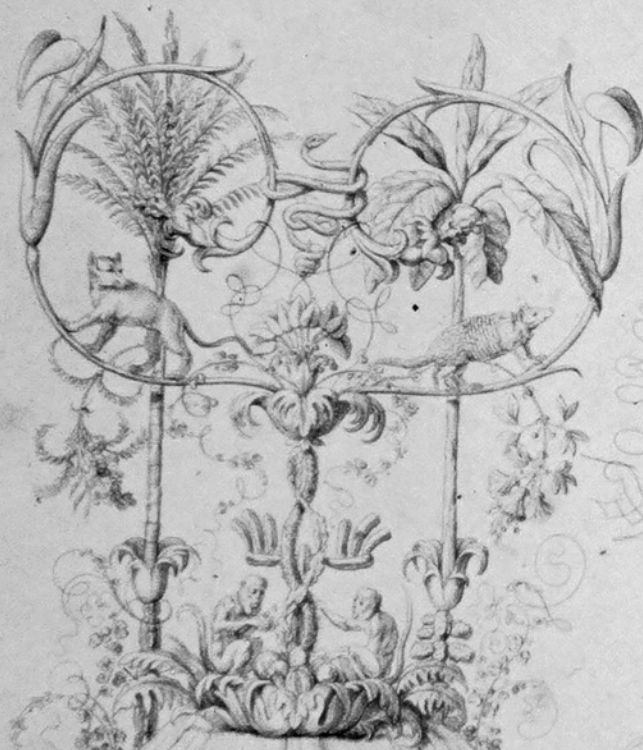


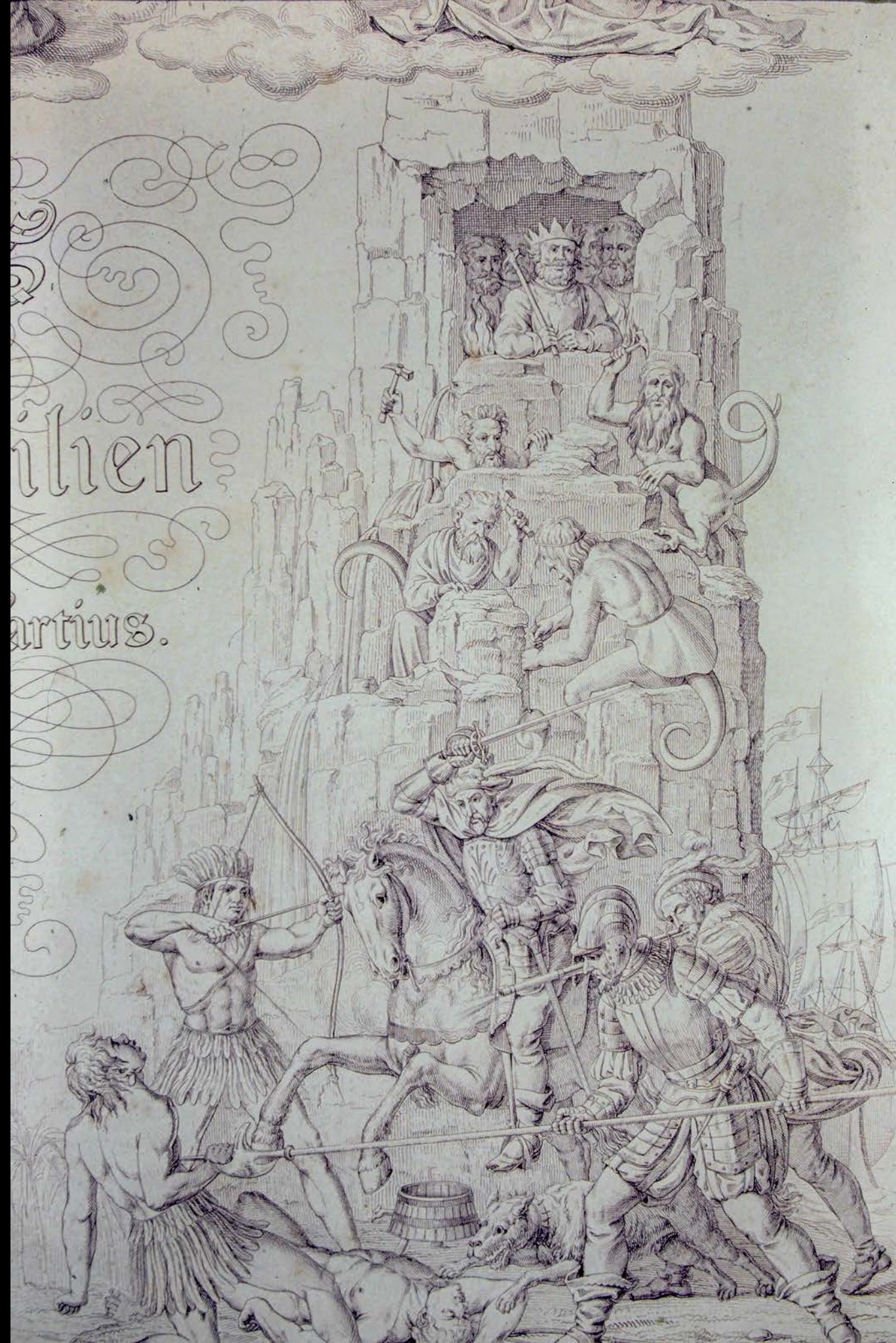
Dr. Johann Baptist von Spix, 1821.

Carl Philipp von Martius - Johann Baptist von Spix - 1817/1820



ATLAS
zur
Reise in Brasilien
von
D. v. Spix und D. v. Martius.

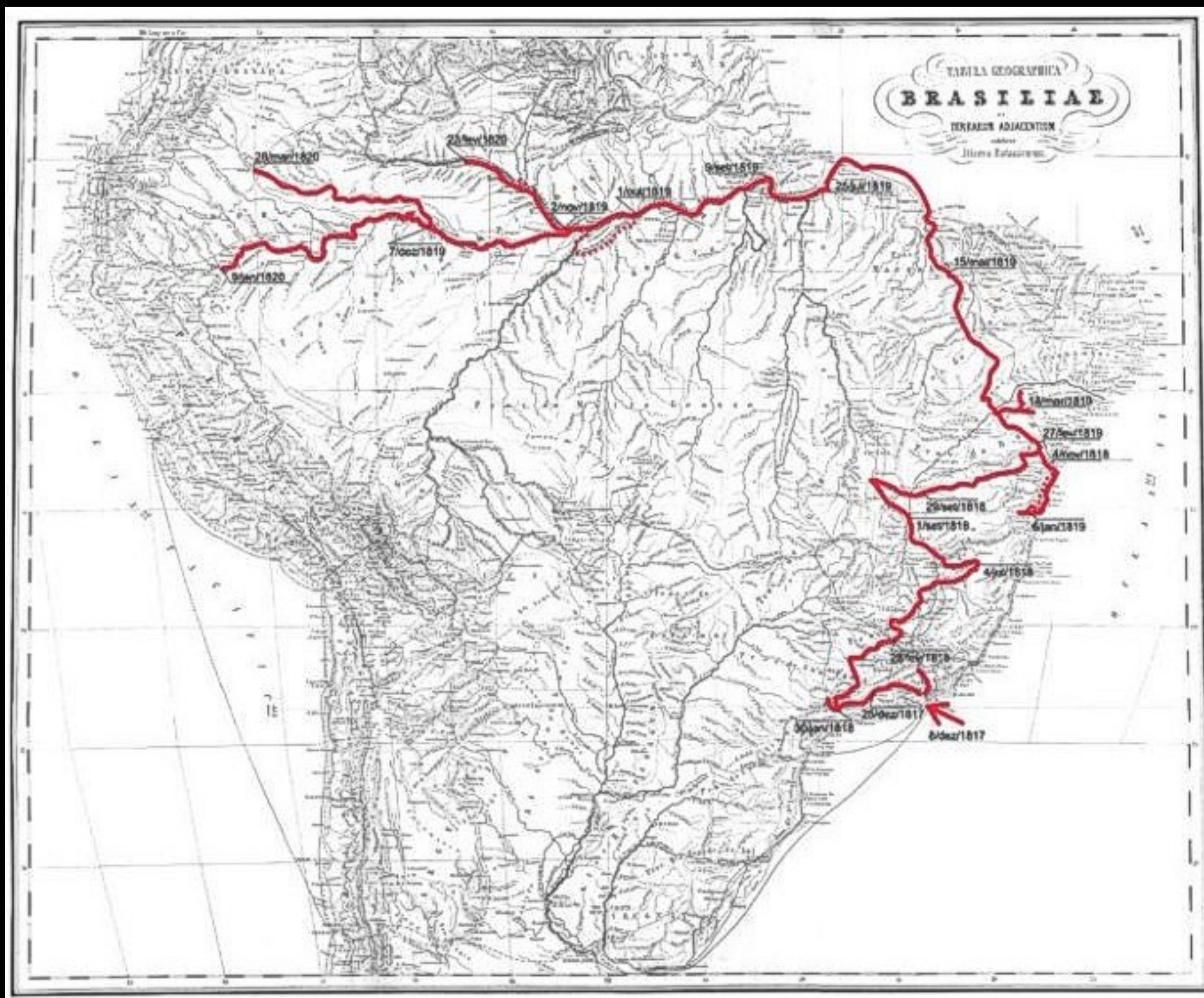




ilien:

artius.





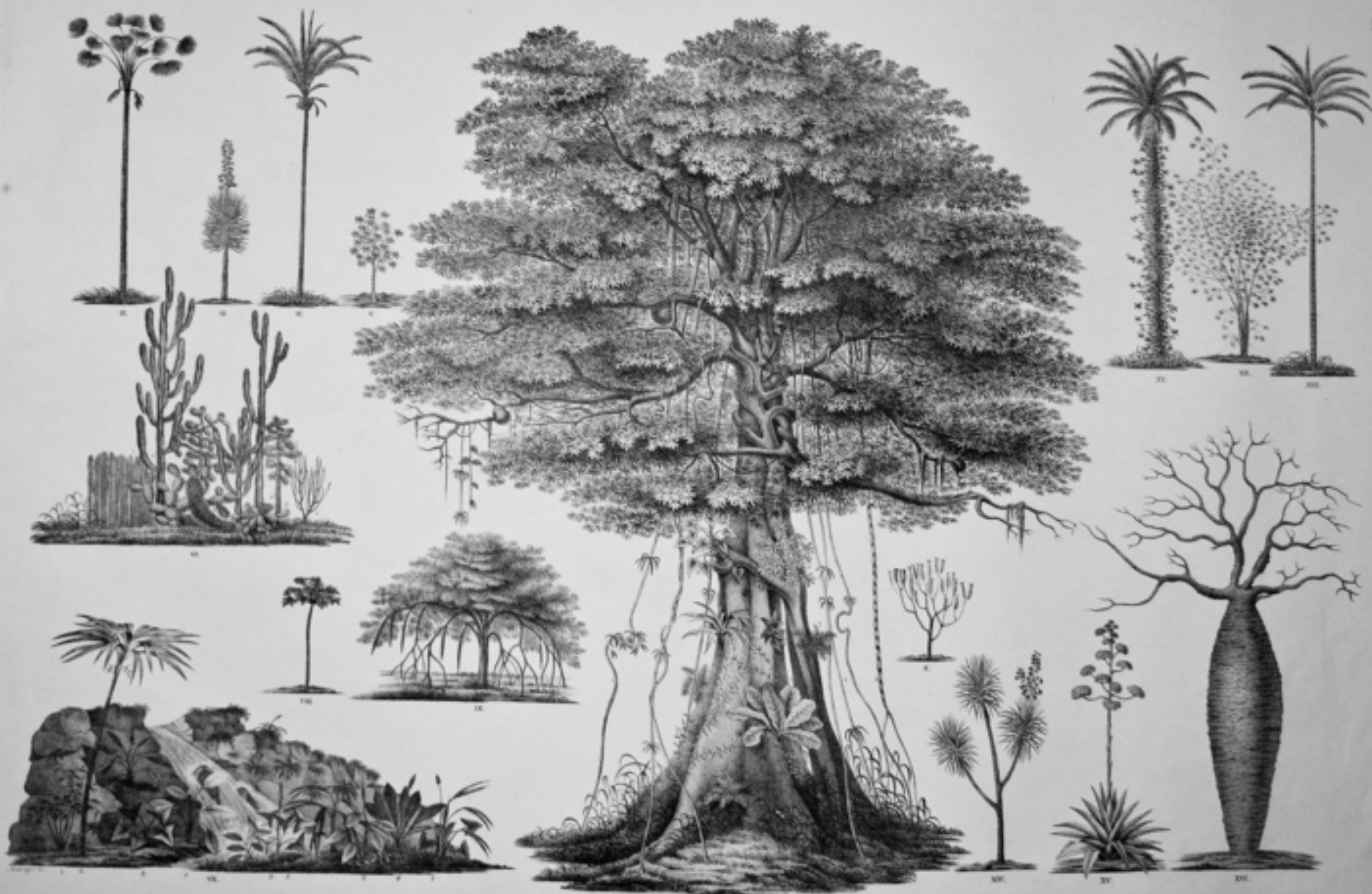


CARIPUNA INDIANS WITH TAPIR (MADEIRA).
(ORCHIDS, BROMELIAS, AND FERNS).



Engl. Vary. 1. Sept. 1851. 10

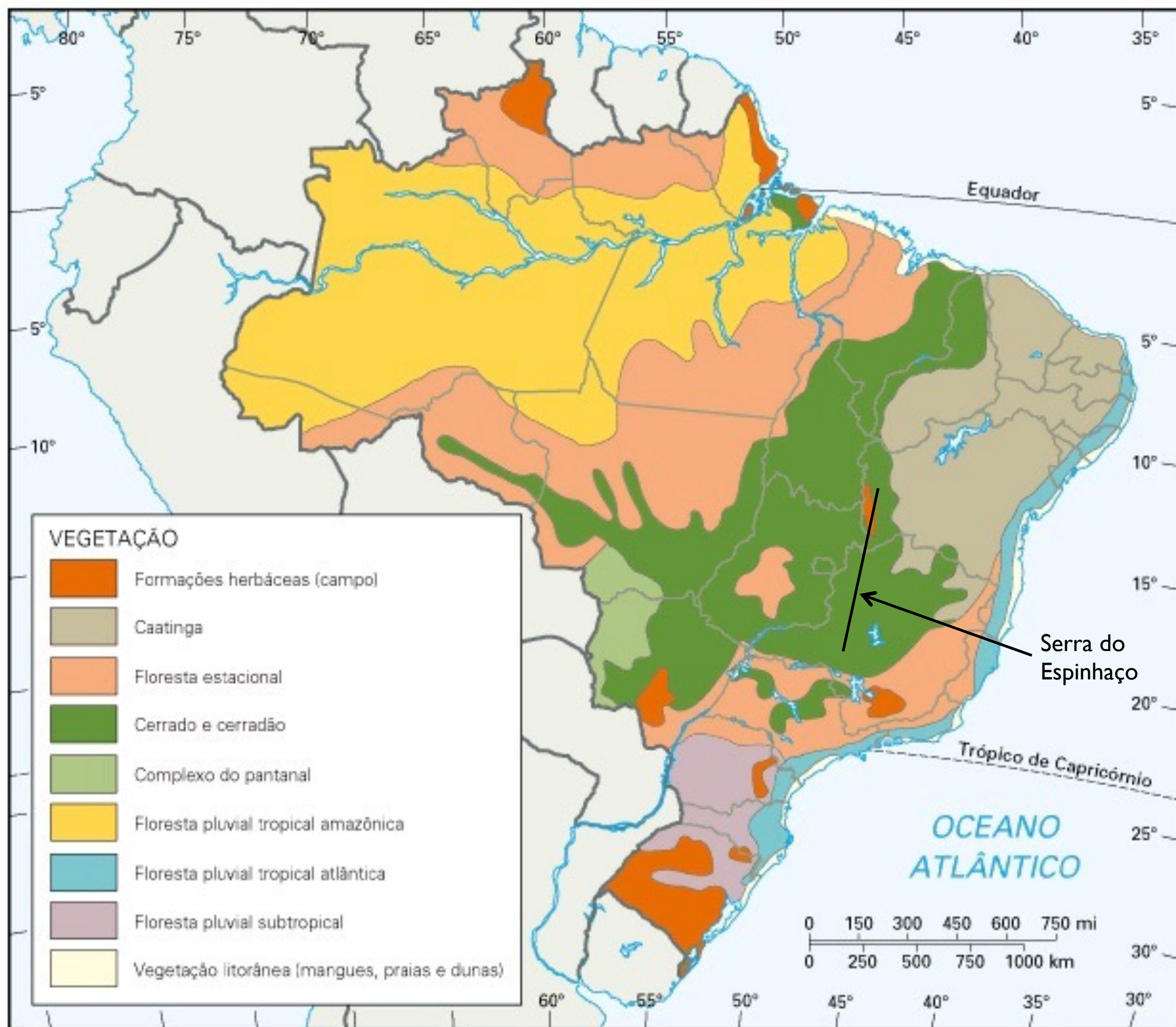
SYLVA PRIMAEVA. PRIMUM PRIMUM. DA. GYGA.
PRIMUM. DA. PRIMUM. PRIMUM. PRIMUM.



PFLANZENFORMEN DES TROPISCHEN AMERICA.

"It seems that nature has chosen the most splendid fields for the original region of these precious stones, and has garnished them with the most beautiful flowers. Everything that we had seen of most beautiful and superb in landscapes, seemed incomparably inferior before the enchantment that was offered to our admired eyes. The entire Diamantino District looks like an artistically arranged farm, whose romantic alpine scenery of hills and valleys allies with lush landscapes of idyllic features."

C. F. von Martius

















































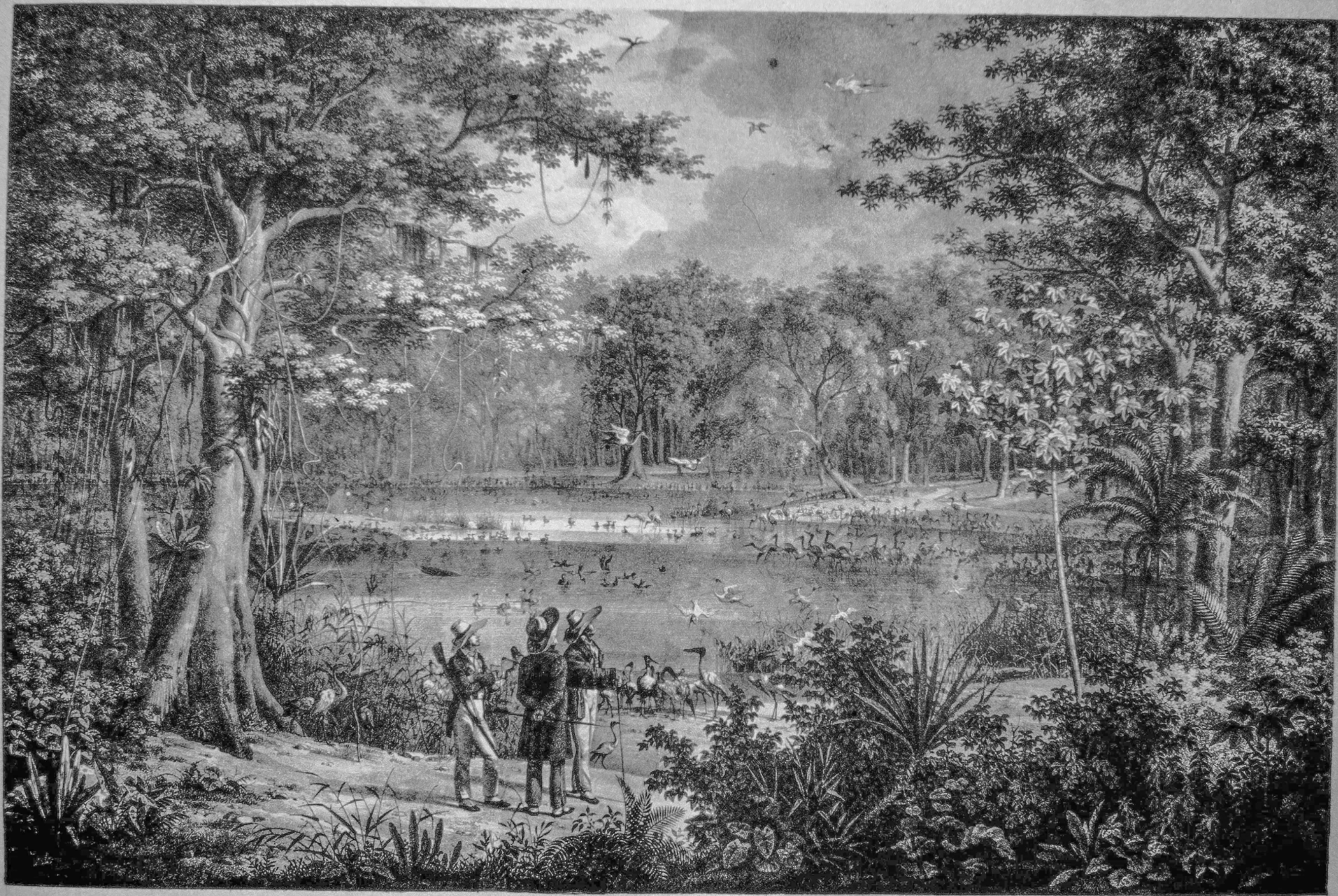












VÖGEL-TEICH AM RIO DE S. FRANCISCO.







INSCRIPTEN AUF EINEM FELSEN DER SERRA DO ANASTASIO.



