



# Design with Nature Online Seminar 2018

## Sumidero Canyon National Park

Maythe Garcia Velarde



# Location

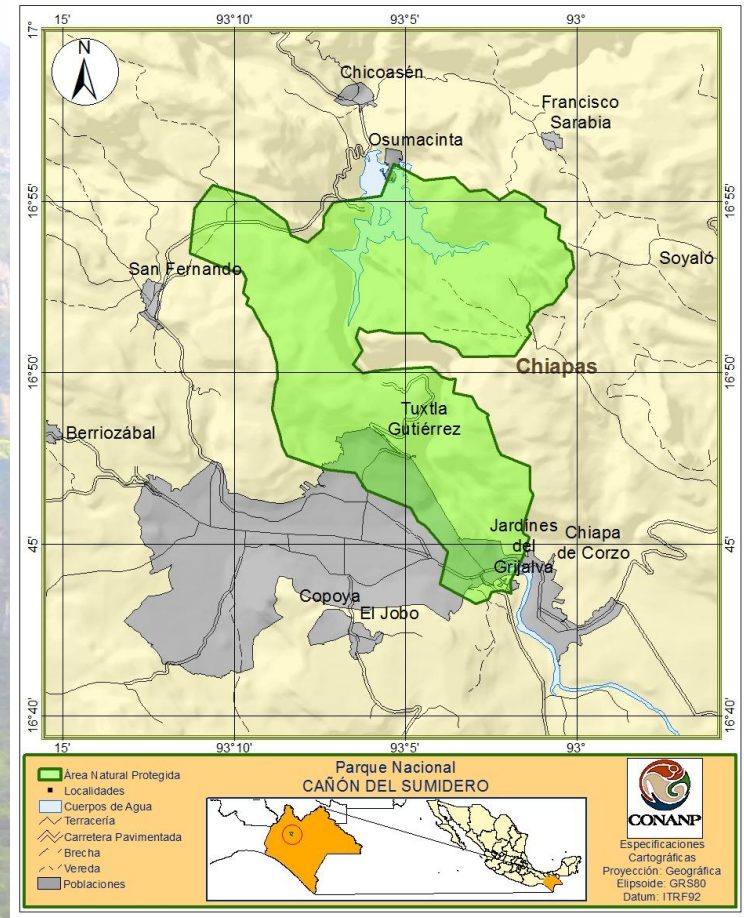
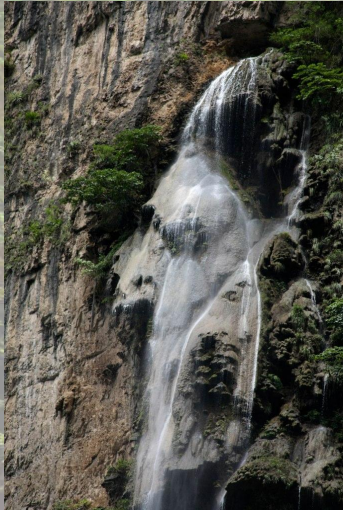
- Located in the Central Depression (a geological formation formed by erosion) of the state of Chiapas
- This canyon is along 5 municipalities.
- Total area of 21, 7 89 ha.
- Some areas inside the park are populated and developed and are referred to as irregular settlements.
- In 1980 the canyon was declared as a protected national area and has been administered by National Protected Natural Areas Commission.
- 2004 Ramsar - Wetland of international importance





# Why is this case relevant?

- Cultural and touristic influence
- Big amount of biodiversity
- This river contributes with 44% of the hydroelectric energy used in the national territory.



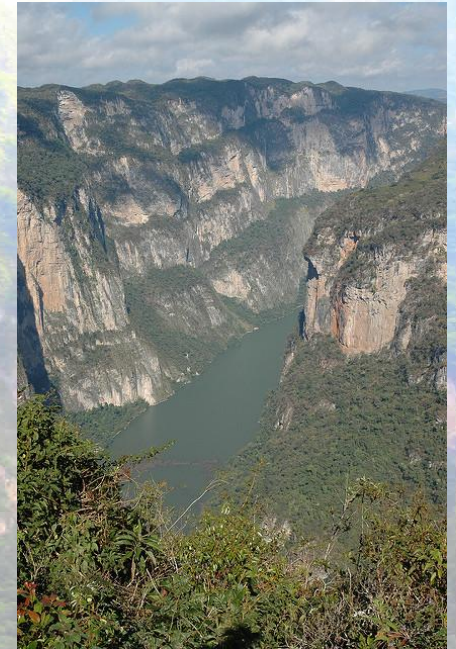


# Flora and Fauna

The predominant vegetation is:

- mid-elevation semi deciduous forest
- moist deciduous forest
- oak woodlands
- pine woodlands
- induce pasture

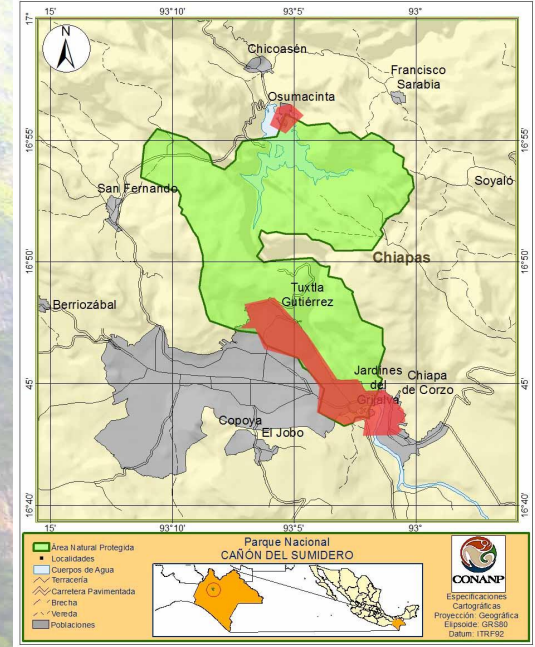
1,736 species	1,381 flora
	355 fauna
29 threatened species	14 fauna
	15 flora
43 species subject to special protection	3 flora
	40 fauna
6 endangered species	2 flora
	4 fauna
1.4 % of the flora is endemic to the state of Chiapas	
0.4 % of the species have limited range	





# Which challenges is this landscape facing?

- Water contamination
- Degradation of the ecosystem
- Increase of the irregular settlements





# Bibliography

- <https://www.viajesyfotos.net/satelite/mexico/canon-sumidero.htm>
- <http://www3.cec.org/islandora/es/item/11635-sumidero-canyon-ii-factual-record-en.pdf>
- <http://www.cuartopoder.mx/plan-de-rescate-del-grijalva-a-punto-de-fracasar-254408.html>
- CCA (2015), Cañón del Sumidero II: expediente de hechos relativo a la petición SEM-11-002, Comisión para la Cooperación Ambiental, Montreal, 98 pp.
- Google Earth
- <https://www.flickr.com>
- <http://blog.caribbeanconnection.mx/2016/02/20/el-canon-del-sumidero/>