



PLITVICE LAKES

VEDRAN VUKOVIĆ

INTERIM PRESENTATION

DESIGN WITH NATURE

2018

BASIC INFO

- **Plitvice lakes** national park
- Located in the **Republic of Croatia**
- Approximately **300 km²**



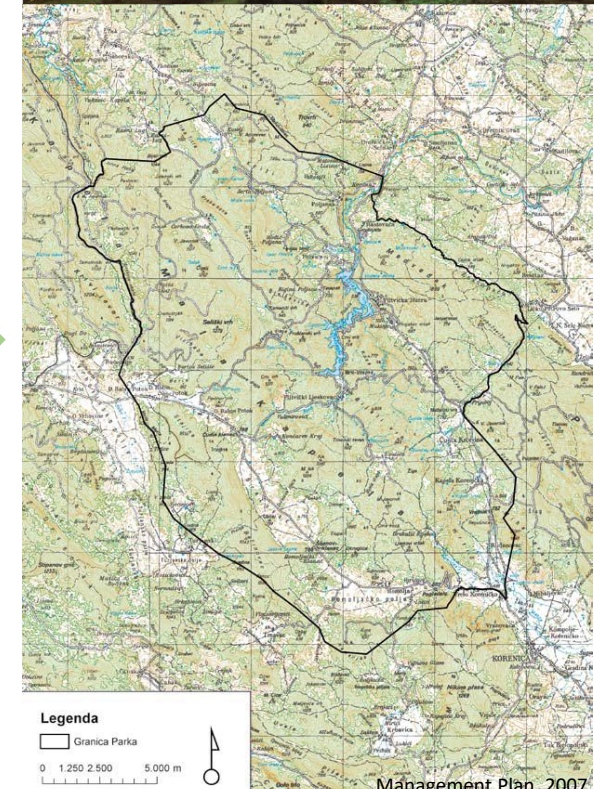
Management Plan, 2007

Key features:

- Primarily **forest** vegetation
- Smaller **grassland** areas
- 16 larger and several smaller **lakes**
- Mountainous **karst** region



Managment Plan, 2007



Management Plan, 2007

BASIC INFO



STRICT CONSERVATION

– entirely untouched and/or insignificantly touched environments



ACTIVE CONSERVATION

– active intervention to ensure protection



USAGE ZONE

– settlements, recreation and tourism infrastructure



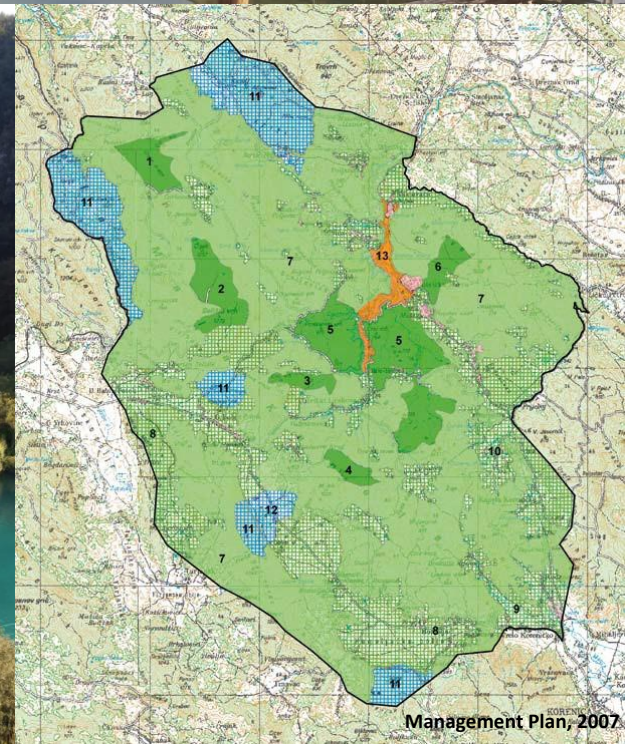
Daniela Nagradic, 2017



Daniela Nagradic, 2017



Daniela Nagradic, 2017



Management Plan, 2007

RELEVANCE

- **Oldest and largest** NP (1949)
- **UNESCO World Heritage** (1979)
- Unique biodynamic **process of tufa** (travertine) **barrier formation** - creation of cascade lakes and waterfalls
- Outstanding universal value and **international recognition**



RELEVANCE

FLORA

- Rich flora, ca. 1400 plant species
- **Endemic species (72)**
- **165 red listed** species
- +50 various orchid species



FAUNA

- **53 red listed** species
- Large carnivores (on the IUCN Red List): **Brown bear, Lynx, Wild cat, Wolf**
- **River otter** (Red List)
- **Short-eared owl** (critically endangered)



BASIC IDEA

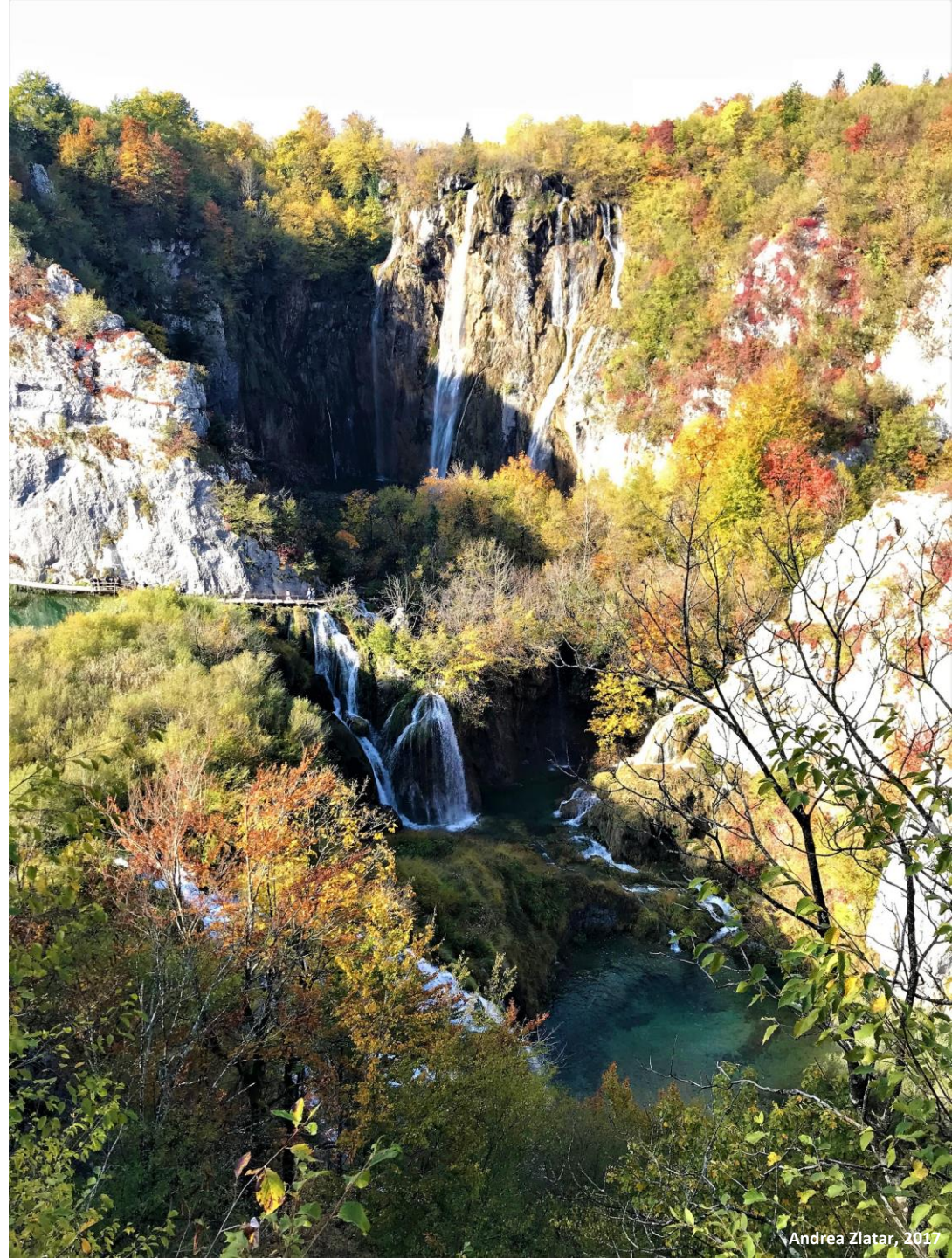
PRESERVATION:

BIODIVERSITY
NATURAL BEAUTY
HERITAGE

CONFLICTS:

HIGH MAINTENANCE
vs
LOW (NO) MAINTENANCE
AREAS

NATURE
vs
HUMAN INFLUENCE



THANK YOU!
BYE!



REFERENCES:

- National Park Plitvice Lakes Managment Plan, (Ministry of Culture of the Republic of Croatia, 2007)
- <http://www.np-plitvicka-jezera.hr/en/> (Accessed 12.11.2018.)