

A photograph of a winter forest. A path covered in snow leads through tall, dark trees. Sunlight filters through the branches, creating a bright, hazy atmosphere. The trees are mostly bare, with some snow on their branches and the ground.

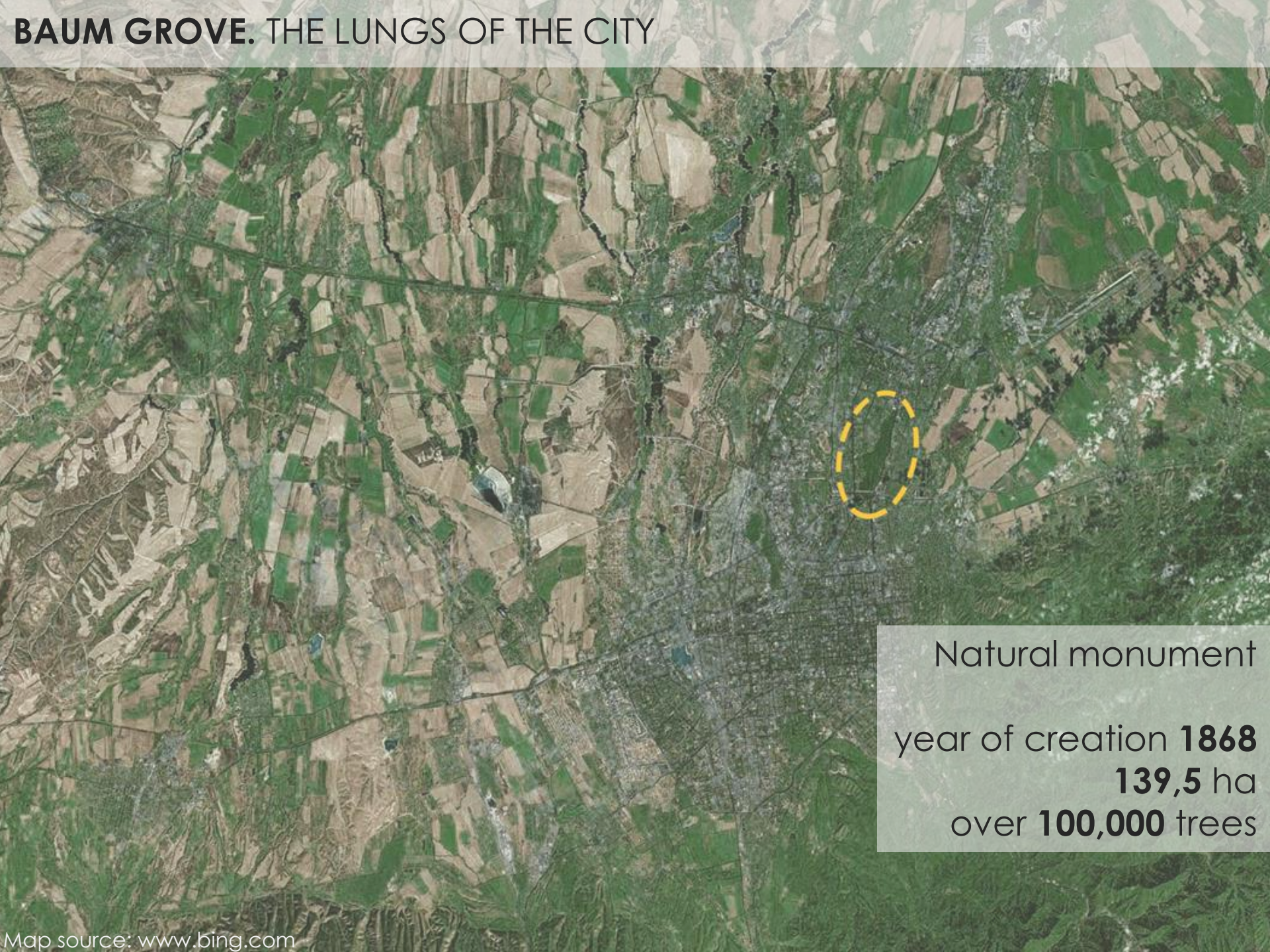
BAUM GROVE. ALMATY, KAZAKHSTAN

Design with Nature
Online Seminar 2018

Wednesday, November 14, 2018

ID: 117408

Anna Ilyuchshenko



BAUM GROVE. THE LUNGS OF THE CITY

Natural monument
year of creation **1868**
139,5 ha
over **100,000** trees

FATHER OF THE **CITY OF GARDENS**

EDWARD BAUM

1850-1921

forest scientist

forest auditor of the region

chairman of the regional agricultural
society for 25 years

Established:
a forest school
a forestry network

Introduced to the region:
61 species of trees
52 types of shrubs
74 varieties of apple trees
49 varieties of pears and other fruit
trees

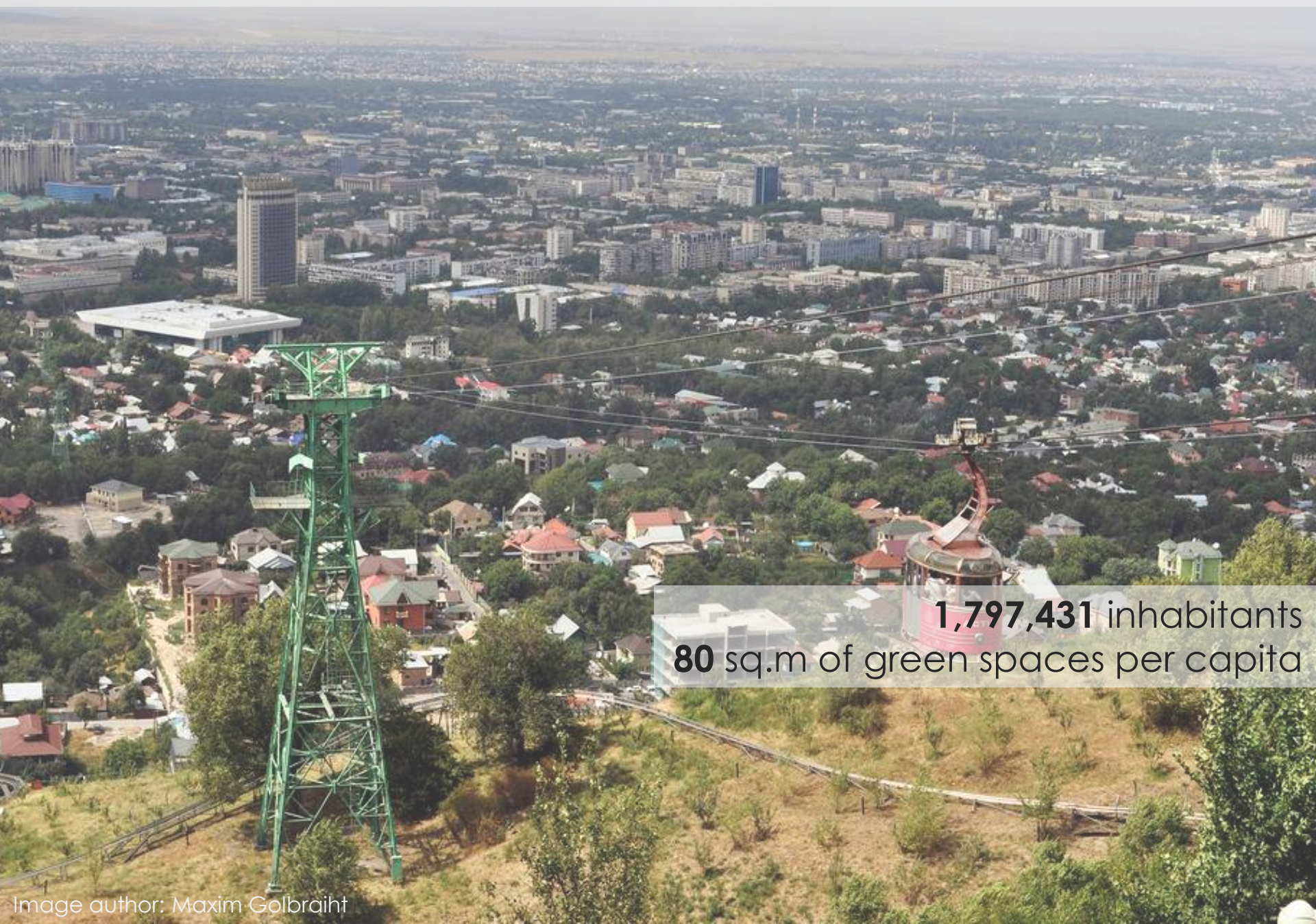
Organized:
annual **"Tree planting Holiday"** (only in
1902 over 1500 infant trees have been
planted) – April 15

Obliged:
every resident of the town to plant at
least **20** ornamental and fruitful trees



Image source: www.vlast.kz

ALMATY. CITY OF GARDENS



1,797,431 inhabitants
80 sq.m of green spaces per capita



BAUM GROVE. ALMATY, KAZAKHSTAN

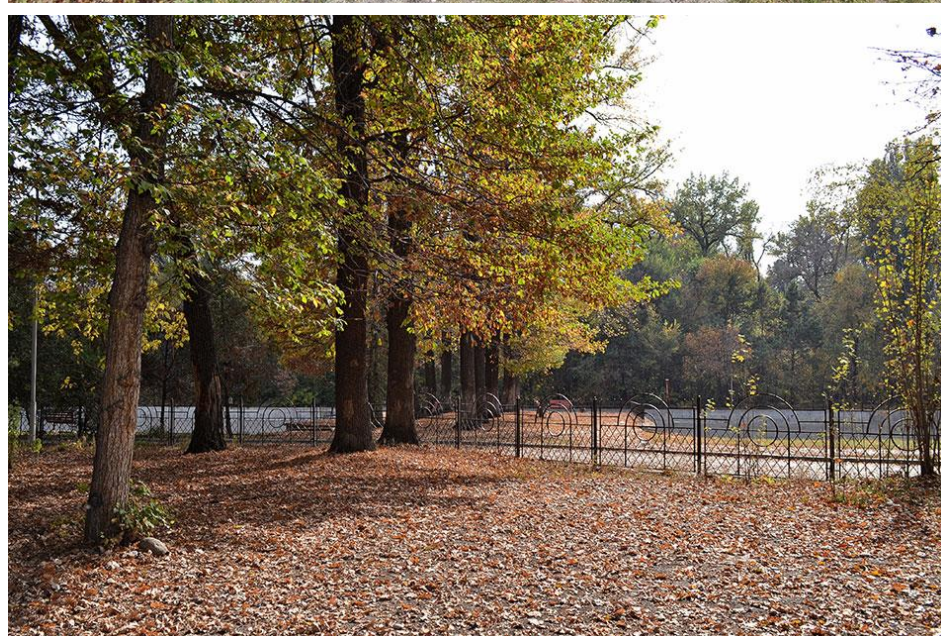
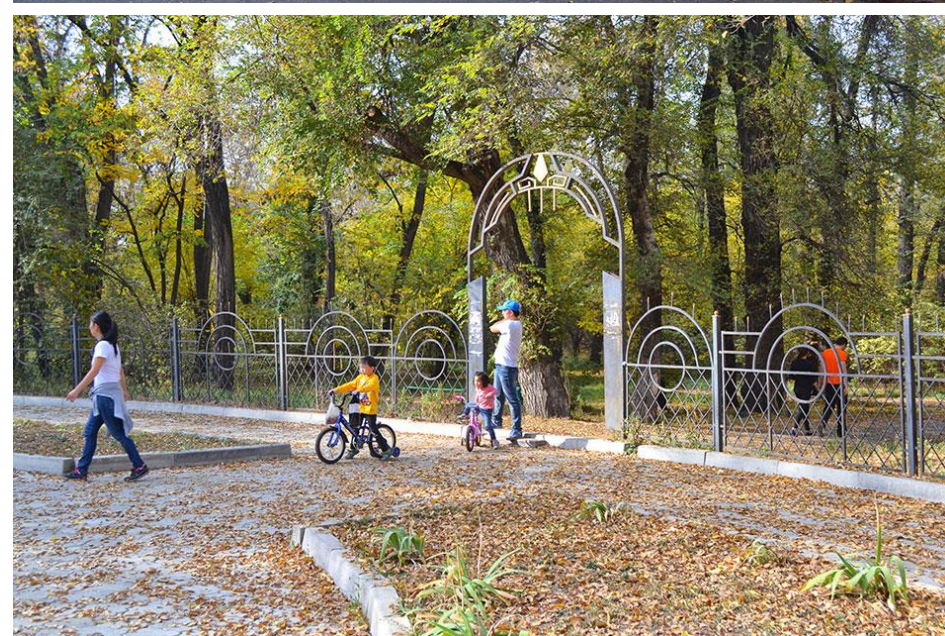
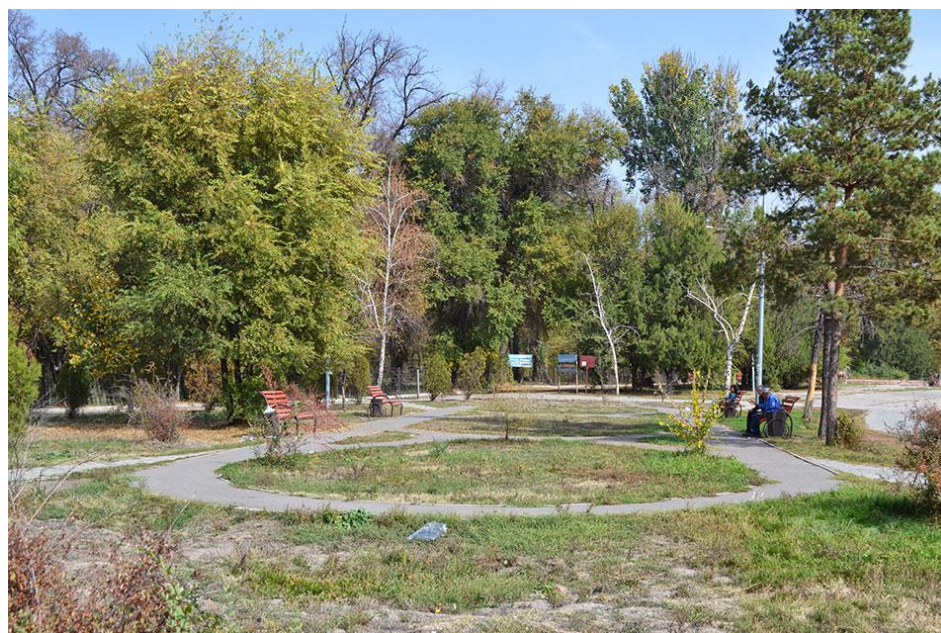
in the List of **protected areas** of Kazakhstan

length **3,5** km

width **900** m

49 species of trees: elm, oak, birch, ash

BAUM GROVE. ALMATY, KAZAKHSTAN





BAUM GROVE. ALMATY, KAZAKHSTAN

THANK YOU!

Design with Nature
Anna Ilyuchshenko

Image author: Alexander Zalessky