



# Valley of Massarelos

Porto - Portugal

**Design with Nature**  
Section C - Heritage Landscapes

Daniela Santos

# Why is this case relevant?

Place of fixation

Focus of development

Water + Fertility + Mills → Agriculture, milling and fishing

Sunny slopes facing west → Big houses of wealthy families of Porto → Terraced beautiful gardens

Large factories → Important industrial archeology site

**Cultural changes**

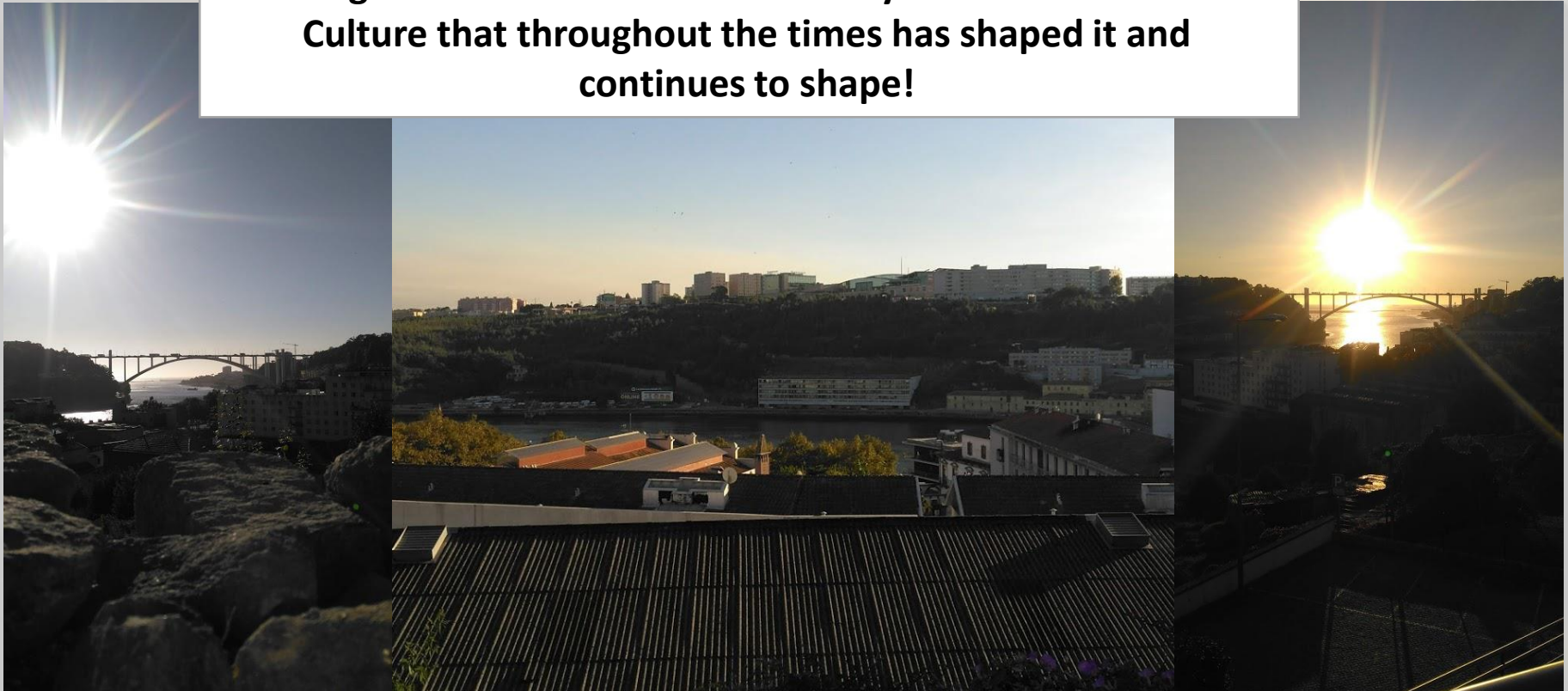
Industrialization, centralization and use of the automobile

Stagnation and degradation

**Inability to adapt to the growth and the new demands of the population.**

# Why is this case relevant?

**In nowadays, this Heritage Landscapes is threatened by the forgetfulness and abandonment by the Man and the Culture that throughout the times has shaped it and continues to shape!**



# Which idea of 'design with nature' guides the design concept of this site?

Man + Nature!

The heritage landscape of Massarelos Valley, has being shaped based in this logic process.

General people perception → everyday experiences + potentialities of the local

This is a **completely cultural place**, which depends on human interaction and maintenance.

# Which idea of 'design with nature' guides the design concept of this site?



If it falls into oblivion, and isn't maintained, the degradation will be accentuate which will **possible lead to total loss** of the existing heritage!!





# Thank you!

**Design with Nature**  
Section C - Heritage Landscapes

Daniela Santos