

Design with Nature

Case: Lalbagh Fort Complex, Dhaka, Bangladesh



Source: www.wikipedia.org

Submitted by
Farzana Sharmin

Lalbagh Fort (Previously known as Fort Aurangabad)

Construction date: 1678 AD (incomplete)

Built by: Mughal Prince Subahdar Muhammad Azam Shah, son of Mughal Emperor Aurangzeb and later emperor himself

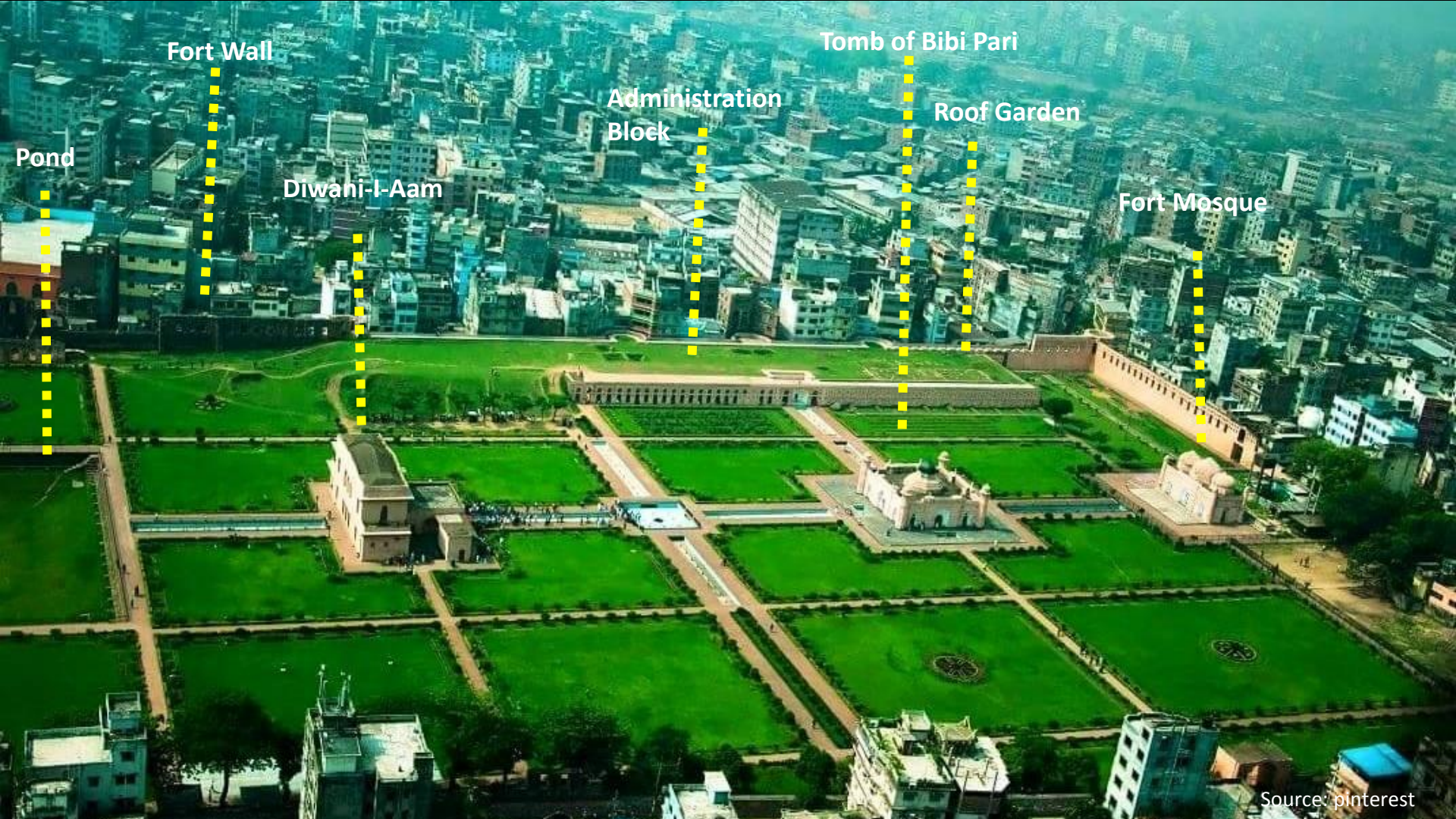
Geolocation:
23°43'7.94"N
90°23'17.38"E

Lalbagh Fort Complex is the only example of Mughal garden remains in Bangladesh. This incomplete structure is in UNESCO World Heritage Tentative List. The fort complex is a combination of three buildings (the mosque, the tomb of Bibi Pari and the Diwan-i-Aam), with two gateways and a portion of the partly damaged fortification wall articulating Charbagh style garden area.

Mughal Subahdar Muhammad Azam Shah started to construct the fort beside Buriganga river named 'Fort Aurangabad' in 1678 AD. After his departure from Bengal, his successor Shaista Khan didn't able to continue its construction because of unfortunate death of his daughter and Prince Azam's betrothed Iran Dukht Rahmat Banu (titled Bibi Pari). The fort became abandoned in 1844 when capital was moved from Dhaka to Murshidabad and named as 'Lalbagh Fort. Later, this place was used by British East India Company. During Sepoy Revolt, 1857, this abandoned fort was used to escape route through its secret tunnel.

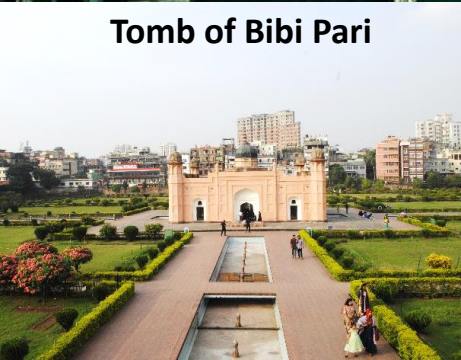


Why is this case relevant?

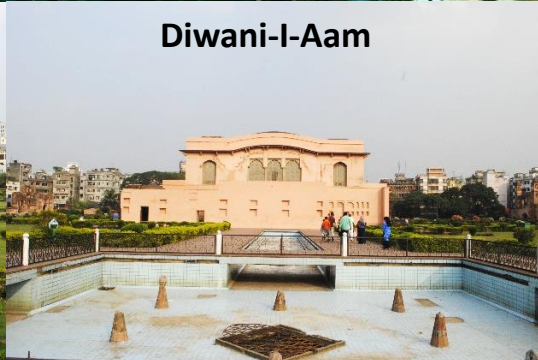


Source: pinterest

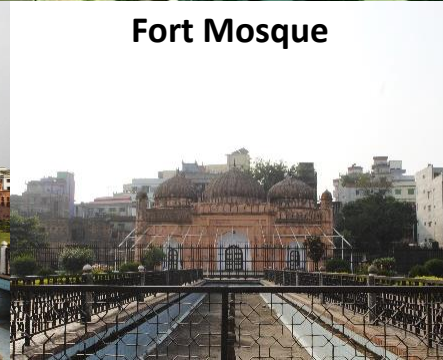
Tomb of Bibi Pari



Diwani-I-Aam



Fort Mosque



Southern gate



Source: own



"The South Gate of the Lalbagh Fort" oil on canvas, by the German painter Johan Zoffany. 26 in x 30 in. Private collection. Image courtesy of Ben Elwes Fine Art. (1787)



1814



1885

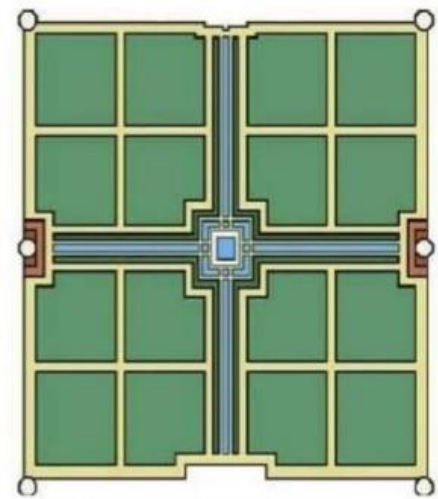


1904

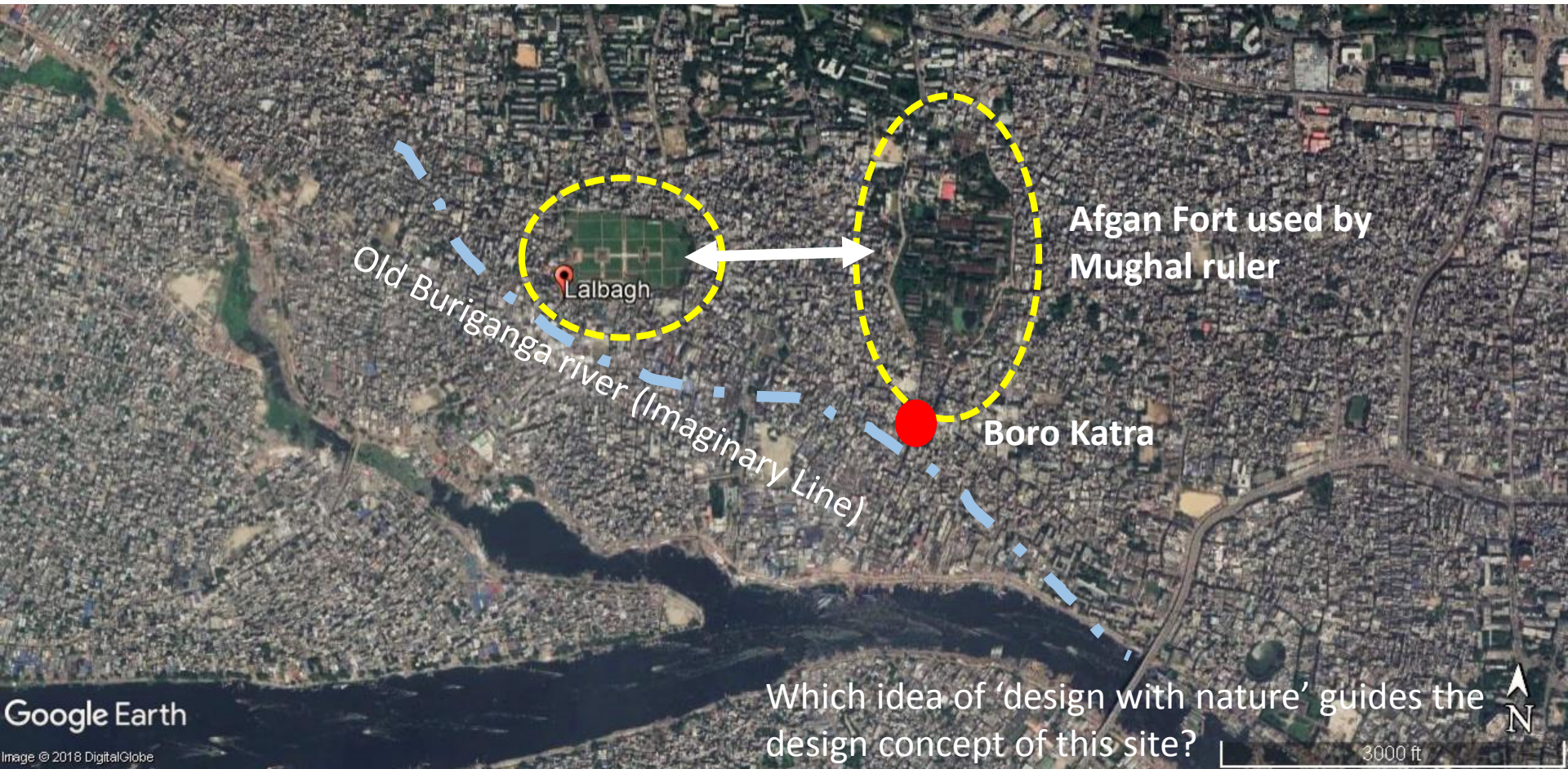
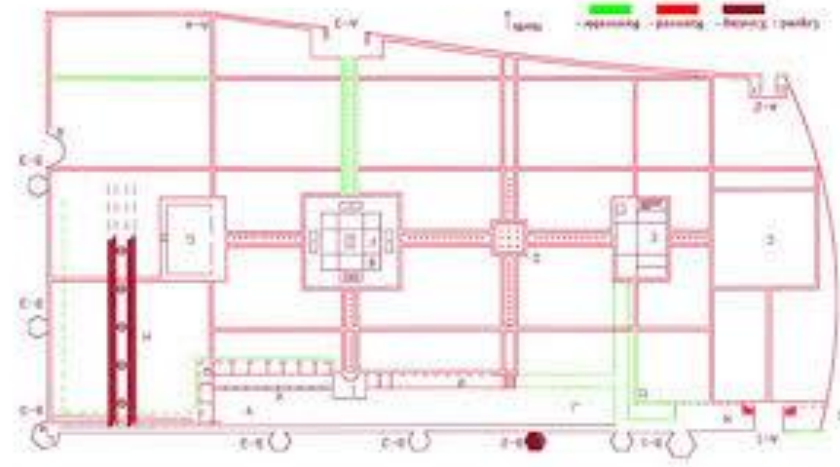
Source: 1st picture: Fort Wall Painting from Buriganga River

by Charles D'Oyly (1814)

www.wikipedia.org



- 'Charbagh' four garden concept
- Persian & Islamic concept
- Interpretation of 4 rivers in heaven written in Quran
- Similarity with Taj Mahal & Humayun's Tomb
- Roof Garden, drainage system & secret tunnel
- Incomplete; Possible extension at east



Which idea of 'design with nature' guides the design concept of this site?



Water features



Water reservoir on Roof Garden



Roof Garden with Pattern



Pond

Thank You