



Design with Nature

Golshan Garden

Tabas City, Iran

Hamid Gohari

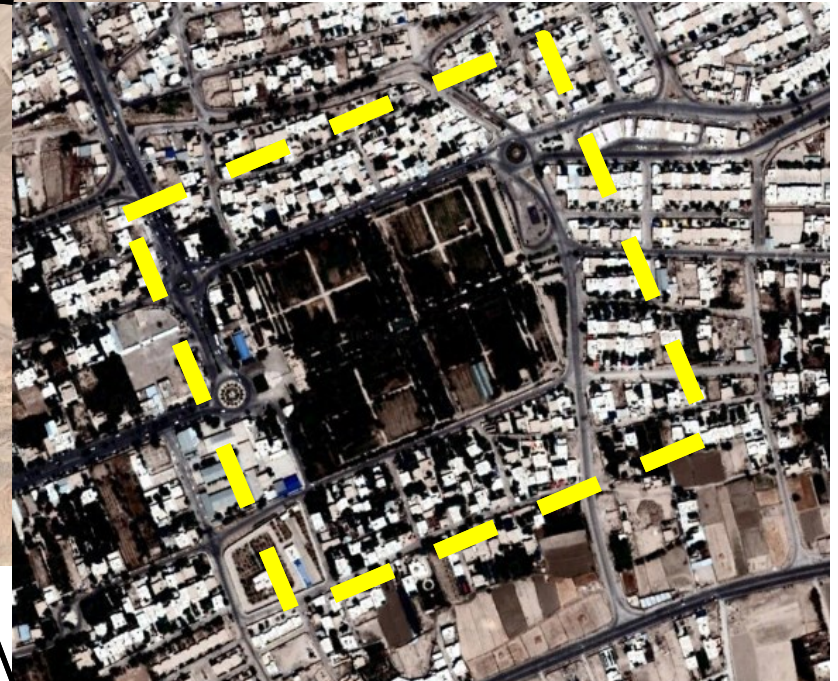
Location



Tabas city



Golshan Garden

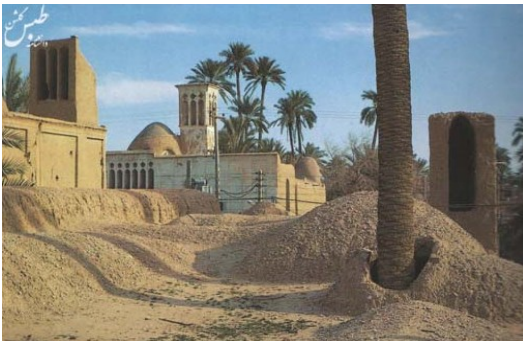
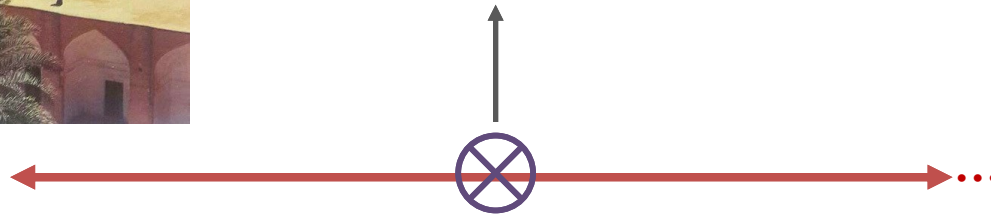


What is outside?

History



**Earthquake
(1978)**



History of the Tabas City



Water and Desert

Transporting Water by Qanat

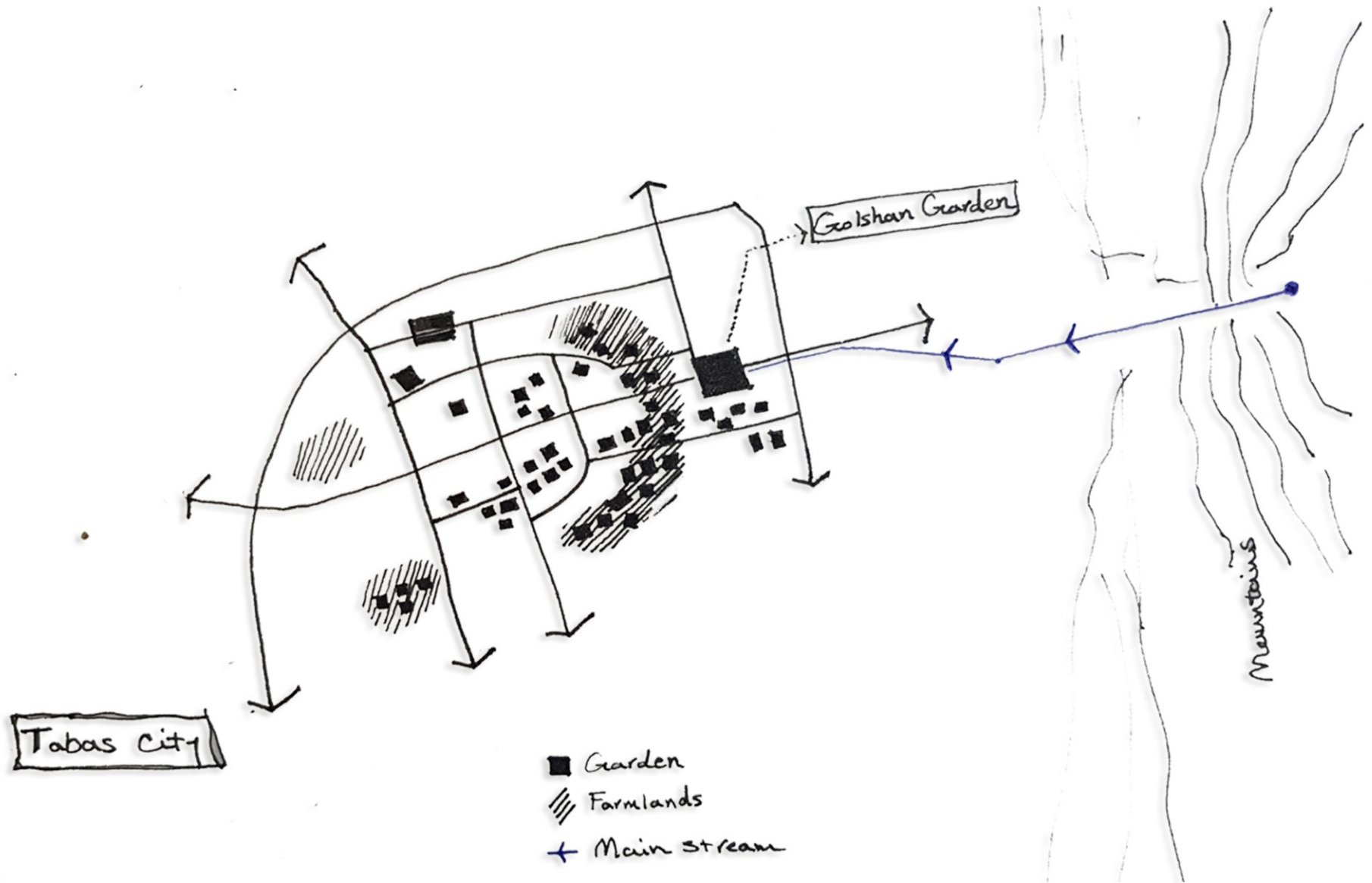


Transporting Water by stream



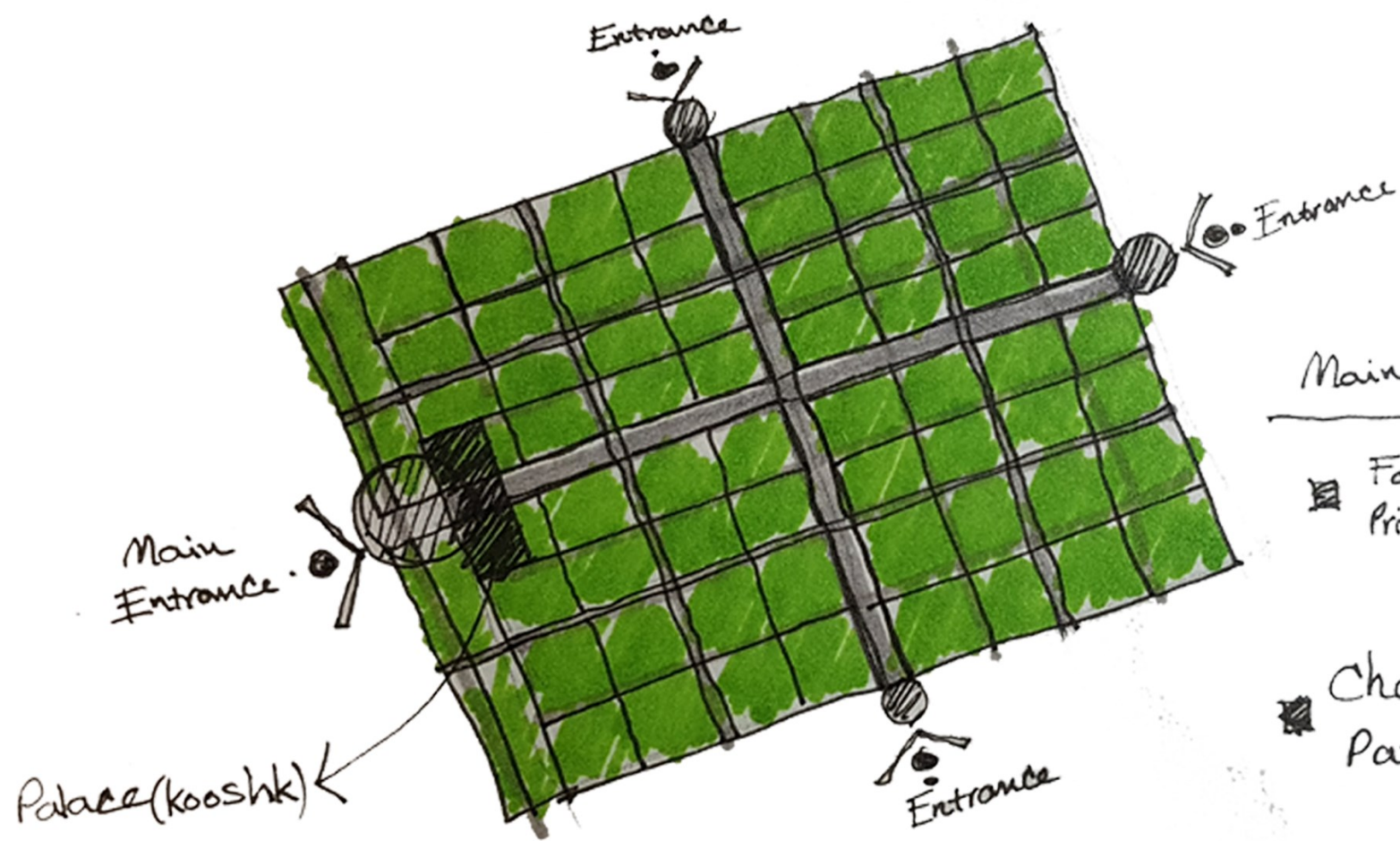


Gardens Network in the City



Let's see inside!

Pattern

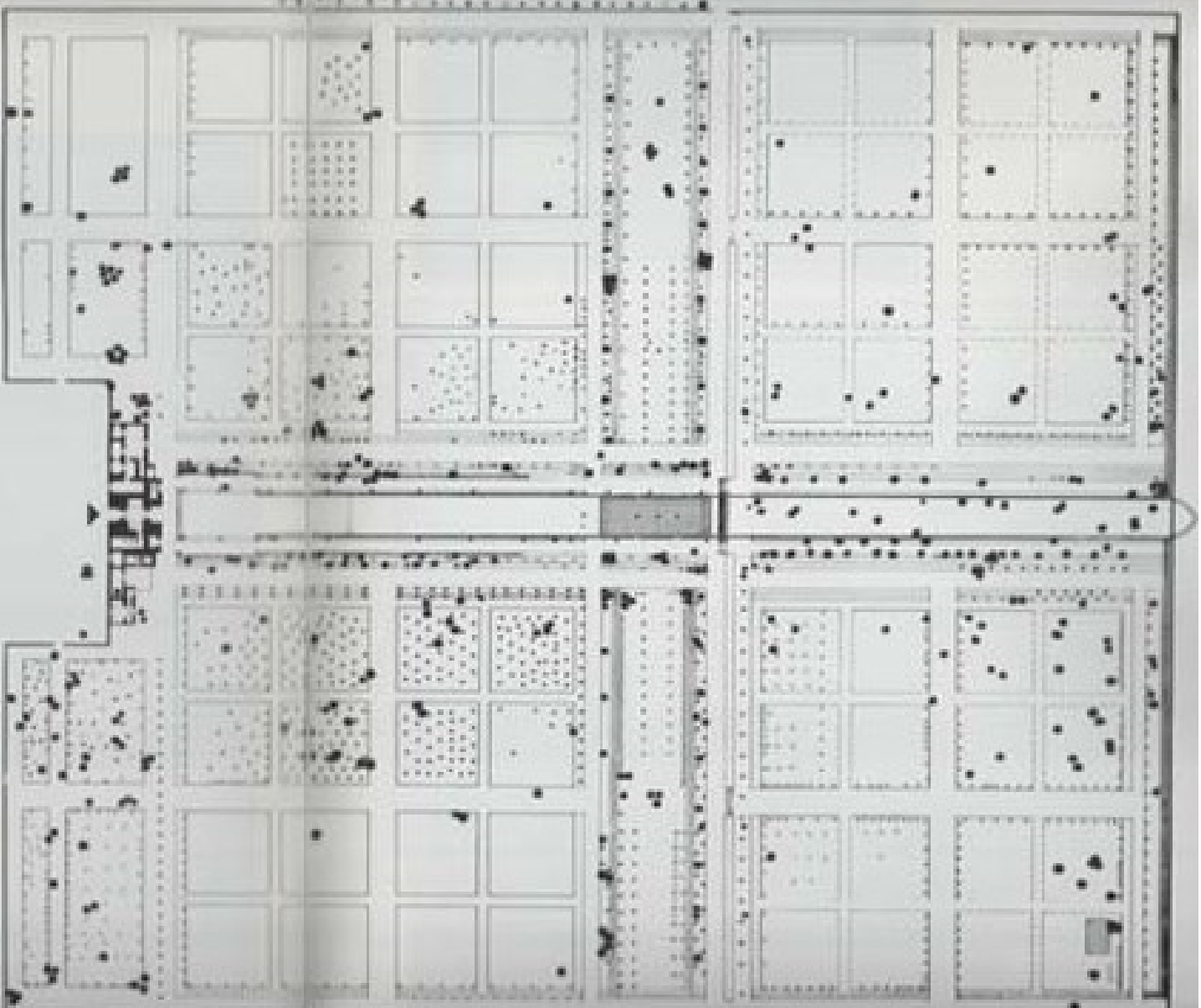


Main Concepts ▼

■ Formal and Private garden



■ Chahar Bagh Pattern



مجلس شورای ملی

مجلس شورای ملی

مجلس شورای ملی

مجلس شورای ملی

Before Earthquake



Current Situation



Before Earthquake



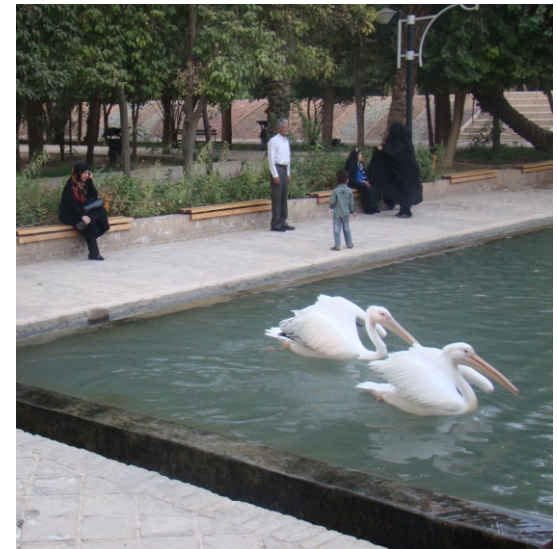
Current Situation



Before Earthquake



Current Situation



Before Earthquake



Current Situation



Why is this case relevant?

- ☐ Golshan garden has evolved in the context of a Persian city.
- ☐ This garden is inherited the main elements from the Persian garden.
- ☐ Different geometry shape.
- ☐ Varied vegetation species.
- ☐ Special water distribution network.

Which idea of 'design with nature' guides the design concept of this site?

- ☐ The design pattern is based on the Chaharbagh pattern.
- ☐ The geometry shape of the garden is square.
- ☐ Different type of vegetation and trees with different weather climates in the garden.
- ☐ Living elements in the garden (Pelikans).



Thank you !