

AESOP4Food

Sustainable Food Planning Seminar

Assesment

presentation 2023

June 15, 2023

- **Juliana Tângari**, Brazil
("Comida do Amanhã
Institute")
- Ghent living lab group -
remote student
- Tutor: Michiel Dehaene

Connecting local food policy & farmland: The case of Santarém, Brazil

How specific local food policies end up supporting local food production that benefits local citizens, local smallholder farmers and access to farmland?

Background - a Brazilian Food Policy Lab



laboratório urbano de políticas
públicas alimentares

Idealização e
coordenação geral

Correalização



[The Laboratory on Urban Food Policies - LUPPA](#) is a collaborative platform to support and facilitate the design of local food policies with an integrated, participatory and systemic approach.



Background - a Brazilian Food Policy Lab



laboratório urbano de políticas
públicas alimentares

Idealização e
coordenação geral

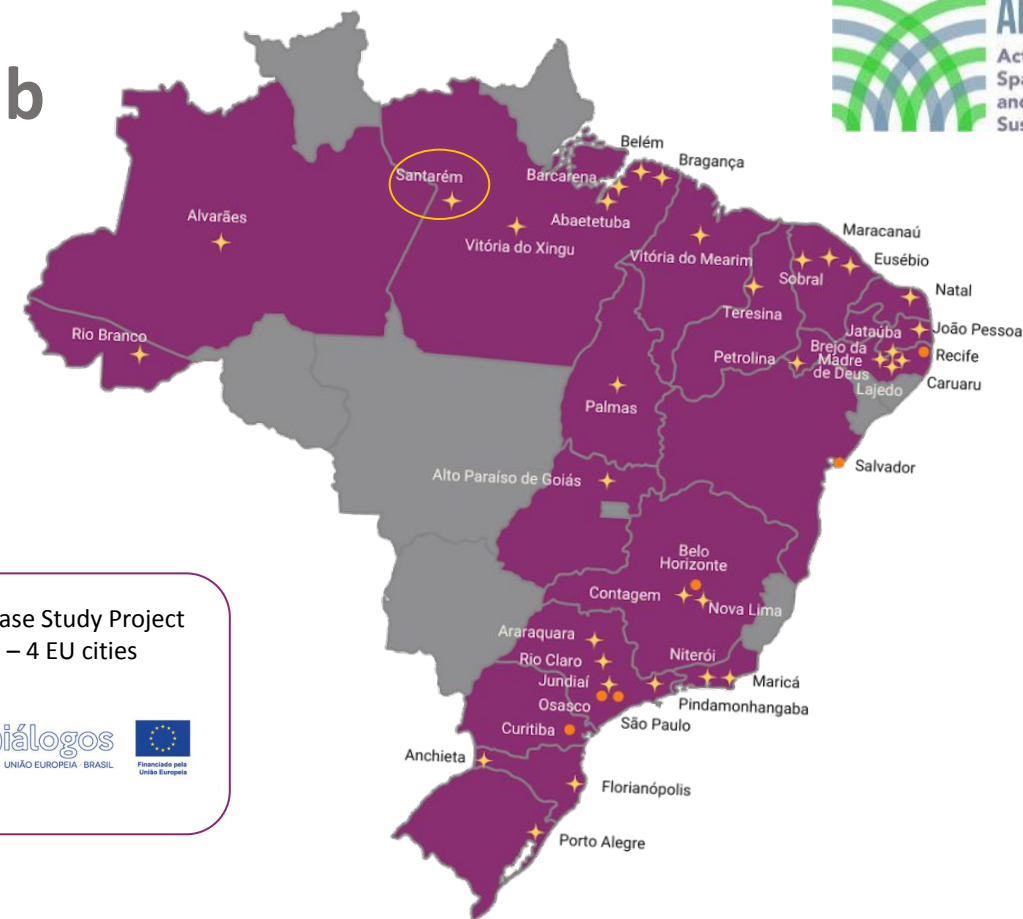


Correalização

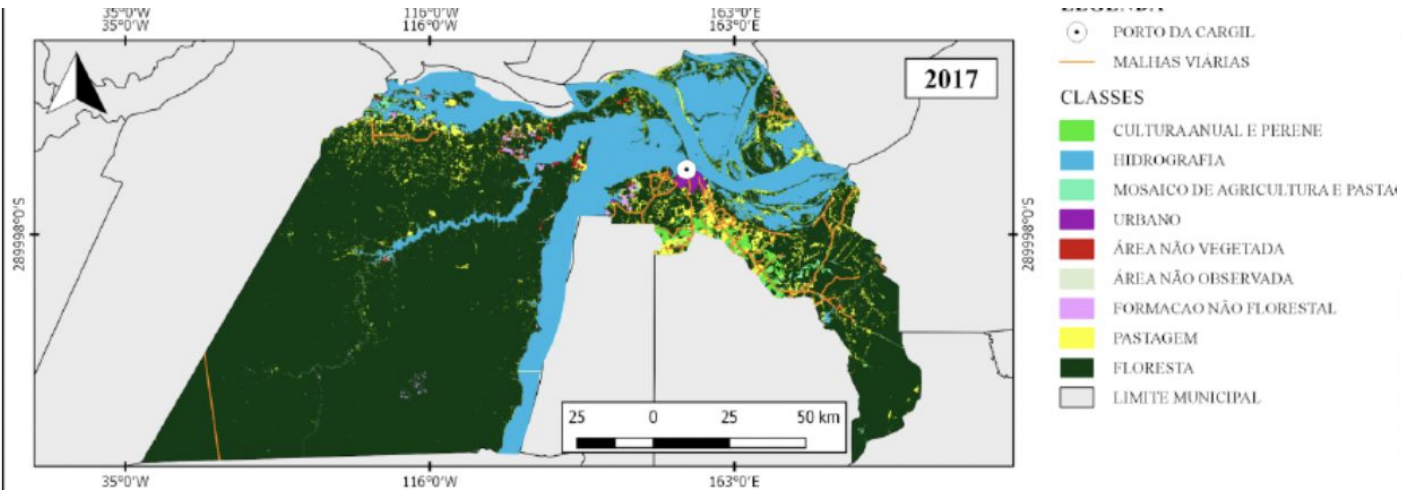


The Laboratory on Urban Food Policies - LUPPA is a collaborative platform to support and facilitate the design of local food policies with an integrated, participatory and systemic approach.

Food & Cities Case Study Project
5 BR cities – 4 EU cities



Municipality of Santarém

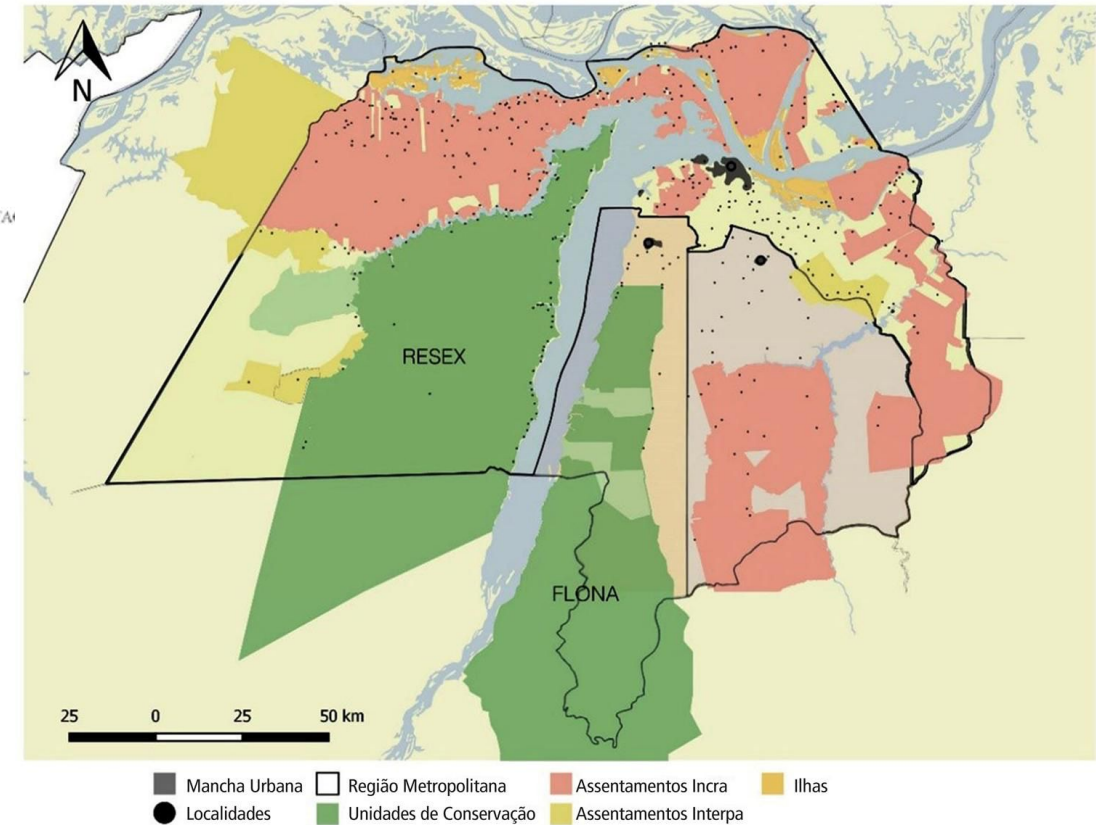


Map by Teixeira, Barbara & Santos, Thiago & Terra, Ademir (2019)

Santarém is located in the western part of the state of Pará, in North of Brazil, midway between the larger cities of Belém at the coast and Manaus upriver. Located at the confluence of the Tapajós and Amazon Rivers.

The regional economy is based on agriculture, cattle, and mining. The city has seen many 'cycles' of development dominated by one or a few economic activities, including rubber extraction (in the last century), coffee production, and gold mining.

There has been a huge growth in the area of soybean plantations, boost by a Cargil grain terminal held by Cargil in the port of Santarém since 1999.



Map by Gomes, Taynara & Cardoso, Ana Claudia Duarte & Coelho, Helder & Oliveira, Kamila (2017)

Food policies that support local farmers



food procurement programs
for fighting hunger:
"PAA" and municipal public restaurant since 2014

**5 family farmers cooperatives
(+500 families benefited)
supply native crops and extractivism produces
for the public food programs**

Some other elements of the policy:

- Food & Nutrition education
- Centre for distribution of family farmers purchased produces
- Technical assistance & equipments support
- Gastronomy annual festival with native food



school feeding program ("PNAE")
oriented by food sovereignty principles since 2017

Key players



- ❑ Santarém Education Secretariat & Santarém Agriculture and Fishery Secretariat
- ❑ Local Cooperatives
- ❑ Local Policy Councils (Food; Rural Development; Fisheries and Aquaculture)
- ❑ CATRAPOA / CATRAPOVOS network (regional network led by the Public Ministry to advance socio biodiversity through public food procurement)
- ❑ Local chefs



Achievements

Considering the role and range of Santarem food policies on school feeding, public food procurement and food education, **an increase in support for local smallholder farmers and traditional communities committed to farming biodiverse non-commodity food is expected.**

The path these local policies are taking and the civil society strengthening **seem to be supporting a constraint to agribusiness monoculture expansion in the region.**

However, much is yet to be implemented regarding artisanal fisheries and fishing traditional communities.



credit: Santarém City Hall

Present challenges for local farmers & fishers



credit: Embrapa

logistics (long distances and large rivers)

local fish in school feeding (lack of sanitary inspection)

better regulatory frameworks

expansion of public composting project & of technical assistance

small agro-industries for pulps, dried fruits, etc



credit: Santarém City Hall

Juliana Tângari
juliana@comidadoamanha.org